

B. & E. Heine

# VICTORIA UNIVERSITY COLLEGE

(UNIVERSITY OF NEW ZEALAND)

*Established in Commemoration of the sixtieth year of the  
reign of Her Majesty Queen Victoria.*



## Calendar, 1925

---

BOOKSELLERS TO THE VICTORIA UNIVERSITY COLLEGE  
WHITCOMBE & TOMBS, LTD.  
WELLINGTON, AUCKLAND, CHRISTCHURCH & DUNEDIN, N.Z.  
MELBOURNE & LONDON.

1925

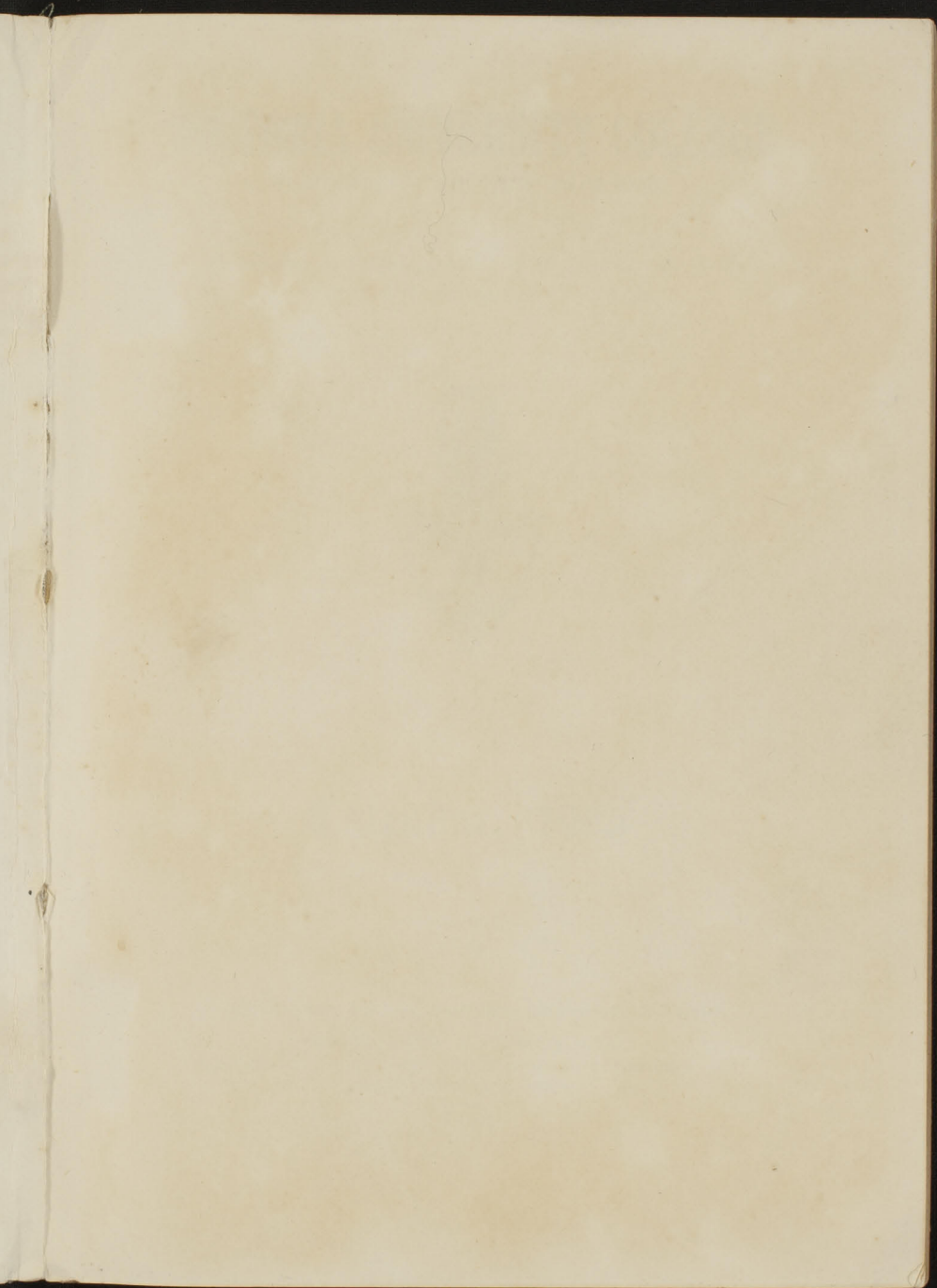
Read - Dendys evolutionary Biology.  
add coming of evolution.

Refer to Darwin - Origin of species.

Remarks - Darwin & after Darwin.

so chapt 3 of Bowen & Vaughan.





74

75

8

VICTORIA UNIVERSITY COLLEGE

1911

# VICTORIA UNIVERSITY COLLEGE

(UNIVERSITY OF NEW ZEALAND)

*Established in Commemoration of the sixtieth year of the  
reign of Her Majesty Queen Victoria.*



## Calendar, 1925

---

BOOKSELLERS TO THE VICTORIA UNIVERSITY COLLEGE  
WHITCOMBE & TOMBS, LTD.  
WELLINGTON, AUCKLAND, CHRISTCHURCH & DUNEDIN, N.Z.  
MELBOURNE & LONDON.

1925



The College seal is lozenge shaped with a representation of a figure of the late Queen standing crowned and sceptred with the legend "Seal of the Victoria University College, Wellington, New Zealand, 1897." The motto is "*Sapientia magis auro desideranda.*"

The Arms are vert on a fesse engrailed between three crowns or, a canton azure charged with four estoilles argent (in the form of the Southern Cross). The Crest is that of the Duke of Wellington.

# CONTENTS

---

	PAGE
Calendar .. .. .	5
Officers of the College—	
Visitor .. .. .	17
College Council .. .. .	17
Teaching Staff .. .. .	18
Professorial Board, Registrar, Librarian ..	19
Former Chairmen of Council, etc. .. ..	19
Benefactions .. .. .	22
Historical Notice .. .. .	24
College Regulations .. .. .	30
Fees .. .. .	34
Time Table .. .. .	35
Classes—	
English .. .. .	40
Latin .. .. .	42
Greek .. .. .	44
Greek History, Art and Literature .. ..	45
French .. .. .	46
German .. .. .	47
Italian .. .. .	47
Philosophy .. .. .	48
History .. .. .	51
Economics .. .. .	52
Education .. .. .	55
Mathematics (Pure and App.) .. .. .	57
Chemistry .. .. .	58

Classes— <i>continued</i>	PAGE
Physics .. .. .	60
Geography .. .. .	62
Geology .. .. .	62
Botany and Zoology .. .. .	64
Law .. .. .	66
List of Publications .. .. .	70
Library Regulations .. .. .	71
University Scholarships and Prizes .. .. .	75
Free Passages .. .. .	79
Victoria College Scholarships .. .. .	81
Results of College Examinations, 1922 .. .. .	91
Alphabetical Roll of Graduates .. .. .	111
Victoria College Act .. .. .	123
College Clubs and Societies .. .. .	140



1925

JANUARY, XXXI.

1	Th
2	F
3	S
4	S
5	M
6	Tu
7	W
8	Th
9	F
10	S
11	S
12	M
13	Tu
14	W
15	Th
16	F
17	S
18	S
19	M
20	Tu
21	W
22	Th
23	F
24	S
25	S
26	M
27	Tu
28	W
29	Th
30	F
31	S

Council meets.

The Macmillan-Brown and Haydon Prizes  
awarded during this month.

1925

FEBRUARY, XXIX.

1	\$
2	M
3	Tu
4	W
5	Th
6	F
7	S
8	\$
9	M
10	Tu
11	W
12	Th
13	F
14	S
15	\$
16	M
17	Tu
18	W
19	Th
20	F
21	S
22	\$
23	M
24	Tu
25	W
26	Th
27	F
28	S

Council meets.

Professorial Board meets.

1925

MARCH, XXXI.

1	§	Applications for EDUCATIONAL BURSARIES must be in the hands of the Chief Inspector of the Wellington Education Board by this date.
2	M	
3	Tu	
4	W	
5	Th	
6	F	
7	S	
8	§	
9	M	Council meets.
10	Tu	
11	W	
12	Th	
13	F	
14	S	FIRST TERM BEGINS.
15	§	
16	M	
17	Tu	
18	W	
19	Th	
20	F	
21	S	
22	§	
23	M	
24	Tu	Professorial Board meets.
25	W	
26	Th	
27	F	
28	S	College Building opened 1906.
29	§	
30	M	
31	Tu	Applications for Provisional Matriculation must be made to the Professorial Board not later than this date.



1925

APRIL, XXX.

1	W	All Fees to be paid by this date except with late fee of 10/6 per subject up to May 10th
2	Th	
3	F	
4	S	
5	\$	
6	M	
7	Tu	
8	W	Council meets.
9	Th	Easter Vacation begins at noon.
10	F	Good Friday.
11	S	
12	\$	
13	M	Easter Monday.
14	Tu	
15	W	
16	Th	
17	F	
18	S	
19	\$	
20	M	
21	Tu	
22	W	
23	Th	
24	F	Professorial Board meets.
25	S	Anzac Day.
26	\$	
27	M	
28	Tu	
29	W	
30	Th	

1925

MAY, XXXI.

1	F	<p>Candidates entries for Honours in Arts, Science and Law, M.A., M.Sc. LL.M., B.Com. (1st &amp; 2nd Division), Senior and Tinline Scholarships, <i>Advanced</i>, Medical, Professional, and all Engineering Examinations (except Entrance), must be in the hands of the Registrar, N.Z. University, accompanied by fees, not later than this date, except with £2/2/0 late fee up to May 22nd.</p> <p>Exemption Fee £1/1/0 due May 1st except with late fee 10/6 up to June 1st. or late fee £1/1/0 to August 1st.</p> <p>Entries for Jacob Joseph Scholarships must be in the hands of the Registrar by this date.</p>
2	S	
3	S	
4	M	
5	Tu	
6	W	
7	Th	
8	F	
9	S	FIRST TERM ENDS.
10	S	
11	M	
12	Tu	
13	W	Council meets.
14	Th	
15	F	
16	S	
17	S	
18	M	
19	Tu	
20	W	
21	Th	
22	F	
23	S	
24	S	Victoria Day. Foundation Day.
25	M	
26	Tu	SECOND TERM BEGINS.
27	W	
28	Th	
29	F	Professorial Board meets.
30	S	
31	S	

1925

JUNE, XXX.

1	M	Students wishing to keep Terms must matriculate on or before 1st June except with late fee of £2 2s. 0d. up to June 21st.
2	Tu	
3	W	
4	Th	
5	F	
6	S	
7	§	
8	M	
9	Tu	
10	W	
11	Th	
12	F	
13	S	
14	§	
15	M	
16	Tu	
17	W	
18	Th	
19	F	
20	S	Professorial Board meets.
21	§	
22	M	
23	Tu	
24	W	
25	Th	
26	F	
27	S	
28	§	
29	M	
30	Tu	



1925

JULY, XXXI.

1 W  
 2 Th  
 3 F  
 4 S  
 5 S  
 6 M  
 7 Tu  
 8 W  
 9 Th  
 10 F  
 11 S  
 12 S  
 13 M  
 14 Tu  
 15 W  
 16 Th  
 17 F  
 18 S  
 19 S  
 20 M  
 21 Tu  
 22 W  
 23 Th  
 24 F  
 25 S  
 26 S  
 27 M  
 28 Tu  
 29 W  
 30 Th  
 31 F

Council meets.

Applications for V.U.C. Rhodes Scholarship nomination to be sent in to the Professorial Board by this date.

Professorial Board meets.

1925

AUGUST, XXXI.

1	S	Candidate's notices, with fees, for November Examinations—B.A., B.Sc., B.Com. (3rd and 4th divisions), LL.B., Law Prof., Med. Dent. and Musical Intermed., Eng. Ent., Home Sc., B.Agr., must be in the hands of the Registrar N.Z. University by this date.
2	§	
3	M	
4	Tu	
5	W	
6	Th	
7	F	
8	S	
9	§	
10	M	
11	Tu	Council meets.
12	W	
13	Th	
14	F	
15	S	Exempted students must forward their examination fees to the Registrar so as to reach him not later than this date.
16	§	SECOND TERM ENDS.
17	M	Entries for Nov. Examinations due on Aug. 1st received to this date, with £2/2/- late fee.
18	Tu	
19	W	
20	Th	
21	F	
22	S	
23	§	
24	M	
25	Tu	
26	W	
27	Th	Professorial Board meets.
28	F	
29	S	
30	§	
31	M	Examination Fees for exempted students may be paid up till this date if accompanied by £2/2/0 late Fee.

1925

SEPTEMBER, XXX.

1	Tu	THIRD TERM BEGINS. Entries for Post-Graduate Scholarship in Arts and for Travelling Scholarship in French due September 1st.
2	W	
3	Th	
4	F	
5	S	
6	§	
7	M	
8	Tu	
9	W	Council meets.
10	Th	
11	F	
12	S	
13	§	
14	M	
15	Tu	
16	W	
17	Th	
18	F	
19	S	Candidates for the Sir George Grey Scholarship must forward applications to the Registrar by this date.
20	§	
21	M	
22	Tu	
23	W	
24	Th	
25	F	Professorial Board meets.
26	S	
27	§	
28	M	
29	Tu	
30	W	

1925

OCTOBER XXXI.

1	Th	
2	F	
3	S	
4	S	
5	M	
6	Tu	
7	W	
8	Th	
9	F	
10	S	Annual College Examinations begin about this date.
11	S	
12	M	
13	Tu	
14	W	Council meets.
15	Th	
16	F	
17	S	
18	S	
19	M	
20	Tu	
21	W	
22	Th	
23	F	
24	S	
25	S	
26	M	
27	Tu	
28	W	THIRD TERM ENDS.
29	Th	
30	F	Professorial Board meets.
31	S	Last day for receiving applications for Sarah Anne Rhodes Scholarships.



1925

NOVEMBER, XXX.

1	§	University Examinations begin early in this month.
2	M	
3	Tu	
4	W	
5	Th	
6	F	
7	S	
8	§	Council meets.
9	M	
10	Tu	
11	W	
12	Th	
13	F	
14	S	
15	§	
16	M	
17	Tu	
18	W	
19	Th	
20	F	
21	S	
22	§	
23	M	
24	Tu	
25	W	
26	Th	
27	F	
28	S	
29	§	
30	M	

1925

DECEMBER, XXXI.

1	TU
2	W
3	TH
4	F
5	S
6	\$
7	M
8	TU
9	W
10	TH
11	F
12	S
13	\$
14	M
15	TU
16	W
17	TH
18	F
19	S
20	\$
21	M
22	TU
23	W
24	TH
25	F
26	S
27	\$
28	M
29	TU
30	W
31	TH

Council meets.

# Victoria University College

WELLINGTON, NEW ZEALAND

VISITOR:  
THE MINISTER OF EDUCATION.

COLLEGE COUNCIL.

CHAIRMAN:  
P. LEVI, M.A. (N.Z.)

MEMBERS OF COUNCIL:

**Appointed by the Governor-in-Council:**

A. R. ATKINSON, B.A. Oxon. (1912-1925).  
D. M. STOUT, M.D. (1923-27).

**Elected by the Court of Convocation:**

P. LEVI, M.A. (N.Z.) (1917-1927).  
A. FAIR, LL.B. (N.Z.) (1923-25).  
\*C. WATSON, B.A. (N.Z.) (1898-1927).  
S. EICHELBAUM, M.A., LL.B. (N.Z.) (1923-25).

**Elected by Teachers of Primary Schools:**

H. A. PARKINSON, M.A. (N.Z.) (1921-1927).  
F. H. BAKEWELL, M.A. (N.Z.) (1917-1925).

**Elected by Members of Education Boards:**

F. W. O. SMITH (1918-1925).  
R. McCALLUM (1904-1927).

**Appointed by Wellington City Council:**

M. F. LUCKIE (1921-1925).

**Elected by Teachers in Secondary Schools and Day Technical Schools:**

J. H. HOWELL, B.A., B.Sc. (Lond.) (1923-25).

**Elected by Governing Bodies of Secondary Schools:**

T. FORSYTH (1919-1925).

**Elected by the Professorial Board:**

PROFESSOR T. A. HUNTER, M.A., M.Sc. (N.Z.) (1920-1925).  
PROFESSOR F. P. WILSON, M.A., F.R.E.S. (1925-1929).

\*Original member of the Council.

Dates of appointment and retirement are placed after each name.



Foundation.	TEACHING STAFF. PROFESSORS.	Date of Appointment.
1899	<b>Classics</b> —Professor J. RANKINE BROWN, M.A., St. Andrews and Oxford; late Scholar of Worcester College, Oxford. <i>Assistant and Instructor</i> —W. Alexander, M.A., LL.B. (N.Z.).	1899
1899	<b>English Language and Literature</b> —Professor H. MAC-KENZIE, M.A., St. Andrews. <i>Assistant and Instructor</i> —H. B. Tomlinson, M.A. (N.Z.)	1899
1899	<b>Chemistry</b> —Professor P. W. ROBERTSON, M.A., M.Sc. (N.Z.), M.A. (Oxford), Ph.D. (Leipzig) <i>Assistant and Demonstrator</i> —A. D. Monro, M.Sc. (N.Z.)	1920
1899	<b>Mathematics, Pure and Applied</b> —Professor D. M. Y. SOMMERVILLE, M.A., D.Sc., St. Andrews; F.R.S.E., F.N.Z.Inst. <i>Assistant and Instructor</i> —D. McLeod, M.A. (Glasgow), B.Sc. (N.Z.).	1915
1902	<b>Modern Languages</b> —Professor E. J. BOYD-WILSON, M.A., B.Sc. (N.Z.), B.A. (Cantab.). <i>Assistant and Instructor</i> —Mlle. d'Ery.	1920
1903	<b>Biology</b> —Professor H. B. KIRK, M.A. (N.Z.), F.N.Z.Inst. (Dean of the Faculty of Science). <i>Assistants and Demonstrators</i> —Ellen Pigott, M.A. (N.Z.) F. G. Maskell, B.A., M.Sc. (N.Z.)	1903
1906	<b>Roman Law, Jurisprudence and Constitutional History</b> —Professor J. ADAMSON, M.A., LL.B., Edinburgh (Dean of the Faculty of Law). <i>Assistant and Instructor</i> —H. H. Cornish, M.A., LL.B.	1908
1906	<b>English and New Zealand Law</b> —Professor J. M. E. GARROW, B.A., LL.B. (N.Z.) <i>Lecturer: Procedure</i> —G. G. WATSON, M.A., LL.B. <i>Lecturer: Criminal Law and Torts</i> —A. M. COUSINS, LL.M. (N.Z.). <i>Assistant</i> —Georgina McKay.	1911
1907	<b>Mental and Moral Philosophy</b> —Professor T. A. HUNTER, M.A., M.Sc. (N.Z.); late Senior Scholar, New Zealand University (Lecturer since 1904). [Ph.D.] <i>Assistant and Instructor</i> —I. L. G. Sutherland, M.A. (N.Z.), (Glasgow).	
1909	<b>Physics</b> —Professor D. C. H. FLORANCE, M.A., M.Sc. (N.Z.), late Professor of Physics, Hongkong University. <i>Assistant and Instructor</i> —Thora C. Marwick, M.Sc. (N.Z.)	1923
1920	<b>Economics</b> (T. G. Macarthy Chair)—Professor B. E. MURPHY, M.A., LL.B., B.Com. (N.Z.), F.R.E.S. <i>Assistant and Instructor</i> —E. P. Neale, M.A., LL.B., M.Com., D.Sc. (N.Z.), F.S.S.	1920



- 1920 **Education**—PROFESSOR J. S. TENNANT, M.A., B.Sc. (N.Z.), Dean of the Faculty of Arts. 1923  
*Assistants*—W. H. Gould, M.A. (N.Z.); E. K. Lomas, M.A., M.Sc. (N.Z.).
- 1921 **History**—Professor F. P. WILSON, M.A. (N.Z.), F.R.E.S. (Lecturer since 1909). 1921  
*Assistant*—J. C. Beaglehole, M.A. (N.Z.).
- 1921 **Geology**—Professor C. A. Cotton, D.Sc. (N.Z.), A.O.S.M., F.G.S., F.N.Z.Inst. (Lecturer since 1909). 1921
- 1924 **Agriculture**—Professor G. S. Peren, B.S.A. (Toronto) 1924  
 Croix de Guerre.

**PROFESSORIAL BOARD.**

**Chairman**—PROFESSOR F. P. WILSON.

**Members**—THE PROFESSORS.

**REGISTRAR:**

G. G. S. ROBISON, M.A. (N.Z.)

**LIBRARIAN:**

REV. B. H. WARD, B.A. London.

**FORMER MEMBERS OF THE COUNCIL:**

- R. G. BAUCHOPE, Elected, 1898; died, 1899  
 THE REV. F. J. WATTERS, D.D. Elected, 1898; resigned, 1899.  
 D. P. JAMES, F.R.C.S., Eng. Appointed, 1898; resigned, 1900.  
 P. J. O'REGAN, Appointed, 1898; retired, 1900.  
 J. P. FIRTH, B.A. Elected, 1898; vacated his seat, 1902.  
 J. R. BLAIR, Elected, 1898; vacated his seat, 1903.  
 A. P. SEYMOUR, Elected, 1898; vacated his seat, 1904  
 FREDERIC WALLIS, D.D., Bishop of Wellington, Elected, 1898.  
 A. R. GUINNESS, Appointed, 1900; retired, 1905.  
 R. LEE, Elected, 1903; vacated his seat, 1905.  
 H. P. RICHMOND, B.A., LL.B., Elected, 1905; resigned, 1906.  
 THE HON. ALBERT PITT, M.L.C., Appointed, 1905; died, 1906  
 W. A. CHAPPLE, M.D. Elected, 1898; vacated his seat, 1906.  
 F. P. WILSON, M.A., Elected, 1906; resigned, 1908.  
 G. TALBOT, Elected, 1898; resigned, 1907.  
 SIR JOHN FINDLAY, K.C.M.G., LL.D., K.C., Elected, 1900; vacated seat, 1905; elected 1906; resigned, 1910.  
 W. H. QUICK, Appointed, 1906; resigned, 1911.  
 E. T. D. BELL, Elected, 1905; resigned, 1911.  
 H. F. Von HAAST, M.A., LL.B. Resigned 1911.  
 J. GRAHAM, Appointed, 1898; retired, 1912.  
 THE HON. SIR FRANCIS BELL, B.A., K.C., G.C.M.G., Elected, 1905; re-elected, 1911; resigned, 1912.  
 THE HON. R. McNAB, Litt.D., LL.B. (N.Z.), Appointed, 1911; retired, 1914.  
 C. WILSON, Elected, 1898; retired, 1915, under the provisions of Victoria College Act, 1914.  
 THE HON. MR. JUSTICE HERDMAN, Elected, 1911; resigned, 1914.

- C. P. KNIGHT, LL.D. Elected, 1898; retired, 1917, under provisions of Victoria College Act, 1914.
- W. FERGUSON, B.A. (Trinity College, Dublin). Elected 1912; retired, 1917, under provisions of Victoria College Act, 1914.
- G. E. ANSON, M.D. Elected 1915; resigned 1917.
- T. R. FLEMING, M.A., LL.B. Elected 1898; retired 1917.
- C. M. HECTOR, M.D., B.Sc. Appointed, 1914; resigned, 1918.
- THE HON. A. T. MAGINNITY, M.L.C. Elected, 1907; died 1918.
- THE HON. J. G. W. AITKEN, M.L.C., Elected, 1909; retired, 1917.
- C. B. MORISON, K.C. Elected, 1913; resigned, 1919.
- W. S. LA TROBE, M.A. (N.Z. and Cambridge). Elected, 1915; retired, 1919.
- PROFESSOR J. RANKINE BROWN, Elected, 1915; resigned, 1917.
- PROFESSOR J. ADAMSON, Elected, 1915; resigned, 1916; also 1920-23.
- PROFESSOR J. M. E. GARROW, Elected, 1916; resigned, 1918.
- PROFESSOR T. A. HUNTER, Elected, 1917; resigned, 1921.
- PROFESSOR D. M. Y. SOMMERVILLE, Elected, 1919; resigned, 1920.
- REV. W. A. EVANS, Elected, 1898; died, 1921.
- PROFESSOR E. MARSDEN, Elected, 1921; resigned, 1922.
- THE RT. HON. SIR ROBERT STOUT, K.C.M.G., P.C., C.J. Elected 1900; retired 1915. Re-appointed 1918; retired 1923.
- C. H. TAYLOR, M.A., LL.B. Elected 1919; resigned 1923.
- W. H. MORTON, M.Inst.C.E. Elected 1913; died 1923.
- E. K. LOMAS, M.A., M.Sc. Elected 1919; resigned 1923.

#### FORMER CHAIRMEN OF COUNCIL:

- J. R. BLAIR, 1898; 1899.
- THE RT. HON. SIR ROBERT STOUT, K.C.M.G., P.C., C.J., 1900; 1901; 1905.
- REV. W. A. EVANS 1902; 1903.
- C. PRENDERGAST KNIGHT, LL.D., 1904.
- THE HON. SIR JOHN GEORGE FINDLAY, K.C.M.G., LL.D., K.C., 1906.
- T. R. FLEMING, M.A., LL.B., 1907; 1908.
- J. GRAHAM, 1909.
- H. F. Von HAAST, M.A., LL.B., 1910.
- C. WILSON, 1911; 1912.
- H. H. OSTLER, LL.B., 1913; 1914.
- C. WATSON, B.A., 1915-1919.

#### FORMER MEMBERS OF THE PROFESSORIAL BOARD:

- J. W. JOYNT, M.A. (Dublin), Lecturer on German, 1900-1.
- D. RITCHIE, B.A. (Oxon.), Lecturer on Economics, 1900-3.
- C. E. ADAMS, D.Sc., Govt. Astronomer, Wellington.
- <sup>1</sup>Agent N.Z. University, London.



- \*R. C. MACLAURIN, M.A., LL.D. (N.Z. and Cambridge), Professor of Mathematics, 1899-1907; Professor of Law and Dean of the Faculty of Law, 1907.
- \*SIR JOHN SALMOND, M.A. (N.Z.), LL.B. (London), Professor of Law, 1906-7.
- M. W. RICHMOND, B.Sc. (London), LL.B. (N.Z.), Lecturer on Constitutional History and Jurisprudence, 1903-5; Professor of English and New Zealand Law, 1906-1911.
- \*W. GRAY, M.A., B.Sc. (N.Z.), Lecturer in Education, 1906-11.
- W. F. WARD, M.A., LL.B. (N.Z.), Lecturer in Commercial Law 1912-14.
- J. S. BARTON, F.P.A., F.I.A., (N.Z.), Lecturer in Accountancy, 1912-1914.
- \*D. K. PICKEN, M.A. (Cambridge and Glasgow), Professor of Pure and Applied Mathematics, 1907-1915.
- \*T. H. LABY, M.A. (Cambridge), Professor of Physics, 1909-15.
- G. W. Von ZEDLITZ M.A., Professor of Modern Languages, 1902-1915.
- J. THOMPSON M.A., Lecturer in French, 1918-1919.
- MARY BAKER, M.A., Lecturer in German, 1916-1919.
- \*H. CLARK, M.A., M.Sc., Temporary Professor of Physics, 1917-1919.
- \*P. W. BURBIDGE, M.A., B.Sc., Lecturer in Physics, 1916-1917.
- \*T. H. EASTERFIELD, M.A., Ph.D., Professor of Chemistry, 1899-1919.
- <sup>10</sup>E. MARSDEN, M.C., D.Sc., Professor of Physics, 1915-1922.
- <sup>11</sup>Late President, Massachusetts Institute of Technology, Boston.
- <sup>12</sup>Late Judge of Supreme Court, New Zealand.
- <sup>13</sup>Principal of the Presbyterian Ladies' College, Melbourne.
- <sup>14</sup>Master of Ormond College, University of Melbourne.
- <sup>15</sup>Professor of Natural Philosophy, University of Melbourne.
- <sup>16</sup>Rockefeller Institute for Medical Research, New York City.
- <sup>17</sup>Professor of Physics, Auckland University College.
- <sup>18</sup>Director of Cawthron Institute of Scientific Research, Nelson.
- <sup>19</sup>Assistant-Director of Education, New Zealand.

**FORMER CHAIRMEN OF THE PROFESSORIAL BOARD:**

- PROFESSOR R. C. MACLAURIN, 1899-1900.
- „ J. R. BROWN, 1901-2.
- „ T. H. EASTERFIELD, 1903-4.
- „ G. W. Von ZEDLITZ, 1905-6.
- „ H. MACKENZIE, 1907-8.
- „ H. B. KIRK, 1909-1910
- „ T. A. HUNTER, 1911-12; 1920-21.
- „ D. K. PICKEN, 1913-14.
- „ J. ADAMSON, 1915-16.
- „ J. M. E. GARROW, 1917-18.
- „ D. M. Y. SOMMERVILLE, 1919-20.
- „ E. MARSDEN, 1922.
- „ E. J. BOYD-WILSON, 1923-24.

**BENEFACTIONS.**

---

In 1905, by the late Jacob Joseph, £3,000 for foundation of two Scholarships.

In 1906, by the late C. Pharazyn, £1,000 for buildings.

In 1907, by the late Donald Manson, £300 for the library.

In 1907, by an anonymous donor, £25 for library.

In 1909, by an anonymous donor, £100 for Physical Apparatus.

In 1909-10, by public subscription, £825 for buildings.

In 1910, by an anonymous donor, £63 for Physical Apparatus.

In 1911, by an anonymous donor, £75 for Chemical Apparatus.

In 1911, by the late A. P. Buller, £44 9s. for the the library.

In 1911-14, by an anonymous donor, £50 annually for a Research Scholarship in Physics.

In 1911, by an anonymous donor, a valuable Microscope to the Biological Department.

In 1912, by Mr. R. McCallum, £15 towards purchase of Halsbury's Laws of England.

In 1913, by an anonymous donor, £32 for Physical Apparatus.

In 1915, by the late T. G. Macarthy £10,000 for the establishment of a School of Economics to be called the T. G. Macarthy School of Economics.

In 1915, by the late Sarah Anne Rhodes a share in the residue of the Estate (estimated value £10,000) for the Education of Women.

In 1915, by Professor D. K. Picken, £58 6s. 8d. for the Mathematical Laboratory.

In 1917, by the late Athol Hudson, Rhodes Scholar, £200 for Scientific Research.



In 1917, by the Wellington Prov. Industrial Association, £35 4s. for Scientific Research.

In 1917, by two anonymous donors, £20 for Scientific Research.

In 1921 by an anonymous donor, £150 for the purchase of apparatus for Physical Research.

In 1923, by friends of the late Bruce Dall, £50 for the institution of an annual Prize for Physics to be known as "The Bruce Dall Prize."

In 1923, by Sir Walter Buchanan, £10,000 for founding a Chair of Agriculture.

In 1924, by Sir James Wilson and others, £1,055 for the foundation of Agricultural Scholarships.

In 1924, by Mr. A. Waterworth, a valuable Microscope and Micro-photographic apparatus.

Books for the Library have been given by the late Sir James Hector, K.C.M.G., Sir Theo Cooper, the late Mr. H. W. Eve, the late Mr. G. A. Hogben, the late Mr. A. P. Buller, Messrs. J. W. Joynt, R. T. Turnbull and T. W. Kirk, the late Mr. J. R. Blair, Miss Izard, Dr. Arnold Izard, Sir R. Stout, Miss Pumphrey, the Hon. F. M. B. Fisher, Mr. A. de B. Brandon, Mr. D. Coghill, Mr. A. R. Atkinson, the late Mr. W. S. Reid, Professor Hunter, Professor Garrow, Professor Sommerville, Professor Cotton, Mr. P. Levi and Sir Frederick Chapman.

### HISTORICAL NOTICE.

On the 23rd December, 1878, a Royal Commission was appointed to inquire into and report upon the operations of the University of New Zealand and its relations to the Secondary Schools of the Colony, and upon the best means of bringing secondary and higher education within the reach of the youth of both sexes. The Commission in its report, under date 9th July, 1879, among other things, recommended that the inequality in the educational institutions of the two islands should be removed by establishing, at the most important centres of population in the North Island, Colleges capable of supplying an education of the same standard as that provided by the University of Otago and Canterbury College, and proposed that the Government should invite the Legislature to make immediate provision for the establishment of two Colleges, one at Auckland and the other at Wellington.

For the maintenance of these two Colleges the Commissioners suggested that the Government should utilise the reserves set apart for the promotion of higher education in the Provincial Districts of Auckland and Wellington, and that the two Colleges should be respectively endowed with Crown lands sufficient to provide an immediate income to each amounting to £4,000 per annum; that, if this were not practicable, the deficit in each case should be made good by a pecuniary grant.

A College was established in Auckland by "The Auckland University College Act, 1882."

Nothing was done for Wellington until the year 1894, when an Act was passed entitled "The Middle District of New Zealand University College Act, 1894," which said "There shall be established in the city of Wellington a College to be connected with the University of New Zealand"; and provision was



made for a governing body, to be called the Council, but no provision was made for any pecuniary grant or endowment. Certain members of the Council were appointed, but nothing could be done for want of funds.

In the year 1897, the Right Hon. R. J. Seddon, P.C., Premier of the Colony, introduced into Parliament the Victoria College Act; an Act, as stated in the preamble, "to promote Higher Education by the establishment of a College at Wellington in commemoration of the sixtieth year of the reign of Her Majesty Queen Victoria," the College being intended to embrace in its work the Provincial Districts of Wellington, Taranaki, Hawke's Bay, Nelson, Marlborough and Westland. The Act was passed on the 22nd December, 1897, the Council was formed, and the work of organisation was begun. The Act provides for the payment out of the Consolidated Fund of a grant of £4,000 a year, and out of this sum the Council was required to give six scholarships each year, called "Queen's Scholarship," to persons of either sex under the age of 14 years upon the results of an examination under such conditions as the Council may prescribe. In 1903 an amending Act was passed providing for six Junior and four Senior Queen's Scholarships. In 1906 the College was relieved of the payment of these Scholarships. By the Education Act Amendment Act, 1907, the Queen's Scholarships were abolished. The Act of 1897 further set apart a parcel of land 4,000 acres in extent in the Nukumaru Survey District (Wellington Provincial District) as an endowment for the College.

The Council decided to begin by the appointment of four Professors for the Chairs of Classics, English Language and Literature, Chemistry and Physics, and Mathematics and Mathematical Physics, and the following were appointed:—Classics, J. R. Brown, M.A., St. Andrews and Oxford; English

Language and Literature, H. Mackenzie, M.A., St. Andrews; Chemistry and Physics, T. H. Easterfield, M.A., Cambridge, Ph.D., Würzburg; Mathematics, R. C. Maclaurin, M.A., LL.D., Cambridge. These Professors arrived in the Colony at the end of March, 1899, and as soon as possible classes were organised and lectures begun.

The Staff has since been increased by the foundation of Chairs in Modern Languages, Biology, Roman Law, etc., English and New Zealand Law, Mental and Moral Philosophy, Physics, Education, Economics, History, Geology and Agriculture.

The College was admitted as an institution affiliated to the University of New Zealand on the 23rd February, 1899.

#### SITE AND BUILDINGS.

In 1900 an Act was passed whereby the College Council was empowered to acquire a site for the College buildings, being part of a town reserve situated on Salamanca Road, six acres in extent, and the Government provided £31,000 towards the cost of buildings. A portion of the buildings was erected, the foundation stone being laid by His Excellency Lord Plunket, K.C.V.O., on the 27th August, 1904. They were opened by His Excellency Lord Plunket on the 30th March, 1906.

In March, 1910, a further portion of the buildings was completed, forming a wing at the rear of the Arts Building. This wing contains two large class-rooms, and in the basement a men's cloak room, and common rooms for students.

In 1919, the Government made the College a grant for the north wing. This wing provides ample accommodation for the Library and the new School of Economics, and a new Women's Common Room and a new Tea Room.

The library contains a handsome stained glass window erected in memory of the students who fell in the War, 1914-1918.



In 1921 the Government made a further grant for the erection of the South Wing. This wing provides accommodation for the Physics and Geology Departments and frees additional space for Chemistry and Biology in the old Science Wing.

In 1905, the College received from Parliament an additional annual grant of £2,000 for specialisation in Law and Science.

In 1914, the Victoria College Amendment Act was passed, by which it was enacted that the name of the College should in future be the Victoria University College. Changes were made in the constitution of the Council and of the Professorial Board. In the same year by an amendment to the New Zealand University Act an increase of £3,000 was made in the annual grant, and all the grants from the Government were consolidated into one annual grant of £9,000; further, the College was allotted a share of the National Endowment grant, part of which (amounting in 1921 to £1,708) comes direct from the Government, while a second part (amounting in 1921 to £853) is paid through the New Zealand University. Of this last sum £300 is set apart for Workers' Educational Classes.

In 1923, a short amending Act was passed which gave the Council power to levy its own Class fees without the previous approval of the Governor-in-Council. It also provided for a change in the date of the end of the Financial Year from March 31st to December 31st, and for a change in the date of the Annual Meeting of the Council from the May Meeting to the July Meeting.

In 1919, an amending Act to the New Zealand University Act was passed, in which it was enacted that from April 1st, 1920, the annual grant to this College should be increased by £2,500.

In 1915, the Trustees of the late T. G. Macarthy made a grant of £10,000, for the purpose of establishing a School of Economics, to be called

“The T. G. Macarthy School of Economics.” The foundation of the Chair was, however, delayed owing to the war. The Chair was founded in 1920 by the appointment of Professor B. E. Murphy.

In the same year, under the will of the late Sarah Anne Rhodes, the sum of £10,000 was left to the Council for the education of women.

In 1921 the Council arranged with the S. A. Rhodes Trustees to grant either a Sarah Ann Rhodes Fellowship, or a Sarah Ann Rhodes Scholarship, and alternative sets of regulations were drawn up. The first scholarship was awarded in 1921 to Miss Eleanor A. Pope, B.Sc.

In 1923 Sir Walter Buchanan made a donation of £10,000 to found a Chair of Agriculture.

The Chair has been filled by the appointment of Professor G. S. Peren, B.S.A., Toronto.

#### COLLEGE LIBRARY.

The College Library is maintained by an annual grant of £425 out of the College funds. At present it contains about 18,000 volumes, and subscribes for rather more than sixty periodicals.

#### INSTRUCTION.

The College provides the necessary teaching for the following:—

- B.A., M.A. (Pass and Honours).
- B.Sc., M.Sc. (Pass and Honours).
- B.Sc. in Engineering (First Year).
- M.B. (First Year).
- LL.B., LL.M. (Pass and Honours).
- Professional Examinations in Law.
- B.Com. (1st and 2nd Division).
- M.Com. (Pass and Honours).
- Diplomas of Education, Journalism and Social Science.



The number of students has been:—

1899—115	attending lectures:	9	exempted
1900—136	”	”	34
1901—144	”	”	51
1902—167	”	”	39
1903—191	”	”	59
1904—195	”	”	76
1905—254	”	”	84
1906—350	”	”	62
1907—376	”	”	67
1908—433	”	”	92
1909—466	”	”	93
1910—426	”	”	84
1911—474	”	”	69
1912—547	”	”	66
1913—463	”	”	49
1914—377	”	”	67
1915—383	”	”	36
1916—323	”	”	39
1917—320	”	”	37
1918—371	”	”	38
1919—534	”	”	31
1920—680	”	”	58
1921—727	”	”	66
1922—733	”	”	96
1923—750	”	”	162
1924—807	”	”	173

#### WORKERS' EDUCATIONAL CLASSES.

In 1915, the Council, in co-operation with the Workers' Educational Association, established three classes in Wellington. The movement has now grown considerably, and in 1924 twenty-two classes were being conducted in different parts of the Victoria University District.

Two permanent Tutors for the Manawatu and Taranaki districts have been appointed, each of whom lectures to several classes.

The Council has recently appointed Professor T. A. Hunter as Director of Studies.



## COLLEGE REGULATIONS.

### SUBJECTS OF INSTRUCTION.

The following are the subjects taught in this College:—

- |                         |                               |
|-------------------------|-------------------------------|
| 1. LATIN                | 17. GEOGRAPHY                 |
| 2. GREEK                | 18. AGRICULTURE               |
| 3. ENGLISH              | 19. PSYCHOLOGY                |
| 4. FRENCH               | 20. CONSTITUTIONAL HISTORY    |
| 5. GERMAN               | 21. JURISPRUDENCE             |
| 6. ITALIAN              | 22. ROMAN LAW                 |
| 7. PHILOSOPHY           | 23. INTERNATIONAL LAW         |
| 8. EDUCATION            | 24. CONFLICT OF LAWS          |
| 9. ECONOMICS            | 25. LAW OF CONTRACT           |
| 10. HISTORY             | 26. LAW OF PROPERTY, PART I.  |
| 11. PURE MATHEMATICS    | 27. LAW OF TORTS              |
| 12. APPLIED MATHEMATICS | 28. CRIMINAL LAW              |
| 13. PHYSICS             | 29. LAW OF PROPERTY, PART II. |
| 14. CHEMISTRY           | 30. LAW OF EVIDENCE           |
| 15. BIOLOGY             | 31. LAW OF PROCEDURE          |
| 16. GEOLOGY             | 32. INDUSTRIAL LAW            |

The College year shall consist of three Terms: the First Term to begin about the middle of March and to end about May 15th; the Second Term to begin about May 31st and to end about August 21st; the Third Term to begin about September 6th and to end about the end of October.

The College examinations begin about October 15th.

### MATRICULATION.

To matriculate a student must pass the Matriculation Examination and make the following declaration:—"I do solemnly promise that I will faithfully obey the Statutes of the University, so far as they apply to me, and I hereby declare that I believe myself to have attained the age of sixteen years."

No examination passed by any student before he has made this declaration can count towards the keeping of terms or the qualifying for a Degree.

The last day for making the Declaration is June 1st, provided that upon payment of a late-fee of £2 2s. 0d. the declaration may be made not later than June 21st.

## SUPERVISION OF COURSES.

The Professorial Board supervises the courses of all new students. Before enrolment in classes a record of the proposed course of study, signed by the Chairman of the Professorial Board, or by the Chairman of one of the Faculties (of Arts, Science, or Law), must be in the hands of the Registrar. In the case of a student proceeding to one of the University degrees, this record shall state the complete course of study proposed for that degree; and subsequent departures (if any) from such proposed courses will have to be similarly recorded.

## TERMS.

The subjects in which the keeping of terms is necessary are:—All subjects for B.A., B.Sc., and LL.B. Degrees, all the subjects of the First and Second Divisions of B.Com., all the subjects of the Engineering Entrance and of the Medical Intermediate.

## INTERNAL STUDENTS

To keep terms in any subject an internal student must

- (a) Have his name on the books of the College;
- (b) Do the Class work and Class examinations to the satisfaction of the Professor; provided that in exceptional circumstances the Professor may allow him to keep terms by passing the examination provided for external students.

For keeping Terms in Physics, Chemistry, Botany, Zoology, Geology or Geography, the Practical Examination or performance of a practical course to the satisfaction of the instructor shall be deemed to be a part of the College Examination; and, unless specially exempted by the Science Faculty, a student presenting himself for an Examination in any of these subjects for the purpose of keeping Terms must do the practical work in that subject in the year in which he so presents himself.



## ATTENDANCE.

To fulfil the attendance requirement in a subject a student must, except in cases approved of by the Professorial Board, attend not less than 90% of the lectures in that subject.

## UNSATISFACTORY STUDENTS.

Students whose work or attendance is unsatisfactory may be excluded from College Classes for the remainder of the Session by the Professorial Board.

REGULATIONS UNDER SECTION VII. OF STATUTE  
"BACHELOR OF SCIENCE."

Candidates shall be tested on translation of a passage written in a prescribed foreign language and dealing with the subject or subjects offered at the Advanced stage.

Candidates are required to present themselves for examination in the first term of the second year of the Advanced course. In case of failure a candidate may submit himself for re-examination in the second term of the second year of his Advanced course.

EXTERNAL (*Exempted*) STUDENTS.

Exemption from lectures is provided for under certain conditions (see Calendar, N.Z. University, 1923-24, p. 21).

To keep terms in any subject an external student must

- (a) Obtain exemption from lectures and pay an exemption fee of £1 1s. 0d. not later than May 1st.
- (b) Pay examination fees (£1 1s. 0d. per subject) not later than August 15th.
- (c) Pass in the subject at the Annual College Examinations.:

*Note.*—Late application for exemption will be received on payment of late fee as follows:—



Up to 1st of June .. ..	10s. 6d.
Up to 1st August .. ..	£1 1s. 0d.

## ACADEMIC YEARS.

A student may sit for a section of a degree at the end of his first year but may not sit for his final examination until he has completed at least three years work to the satisfaction of the Professorial Board.

*Note.*—Applications for exemption must be made on the proper form which may be obtained from the Registrar.

## STUDENTS' ASSOCIATION FEE.

Every student attending lectures shall each year on enrolment pay to the Registrar the sum of 10/6, which sum shall be paid into a Consolidated Fund in the name of the Students' Association; provided that any student in whose case payment may involve hardship may appeal to the Professorial Board for exemption or for reduction of same.

Upon payment of this sum the student shall *ipso facto* become a member of the Students' Association and shall also be entitled to become on written application and without any further payment a member of all College clubs and societies provided he agrees to abide by their constitutions and rules.

*Note.*—Students taking only one half-course shall not be required to pay the above fee.

## SCALE OF FEES.

ANNUAL COLLEGE FEE .. ..		£1/1/-
Students Assn. Fee .. ..		10/6
English .. ..	£4/4/-	Physics Theory .. 4/4/-
Latin .. ..	4/4/-	Physics Lab. Fee .. 3/3/-
Greek .. ..	4/4/-	„ Material .. 10/-
*Greek History, Literature and Art ..	4/4/-	Pass Physics as half subject—each year.
French .. ..	4/4/-	Theory .. ..
German .. ..	4/4/-	Laboratory Fee .. £3/3/-
German for Science Students .. ..	2/2/-	Chemistry Theory .. 4/4/-
Elementary Italian ..	2/2/-	„ Laboratory Fee 3/3/-
Philosophy .. ..	4/4/-	„ Material .. 1/-/-
Psychology (for B.A.) ..	2/2/-	Organic Chemistry Theory .. 2/2/-
„ Laboratory Fee ..	1/1/-	Laboratory Fee .. 2/2/-
Ethics .. ..	2/2/-	Geology—Theory .. 4/4/-
Logic .. ..	2/2/-	„ Laboratory Fee 2/2/-
Education .. ..	4/4/-	Psychology—Theory .. 4/4/-
Diploma of Education ..	4/4/-	Laboratory Fee .. 3/3/-
Experimental Pedagogy ..	2/2/-	Botany—Theory .. 4/4/-
Principles of Teaching ..	2/2/-	Laboratory Fee .. 3/3/-
History of Education ..	2/2/-	Material .. 10/-
History .. ..	4/4/-	Zoology—Theory .. 4/4/-
Econ. History .. ..	2/2/-	Laboratory Fee .. 3/3/-
Mod. History (for B.Com.) .. ..	2/2/-	Material .. 10/-
English History .. ..	2/2/-	General Biology .. 2/2/-
Economics .. ..	4/4/-	Physical Geography .. 2/2/-
Com. French .. ..	3/3/-	Research Fee for Lab-Work .. .. 2/2/-
Stat. Method .. ..	2/2/-	Honours in Law .. 4/4/-
Currency and Banking ..	2/2/-	Jurisprudence .. 2/2/-
Industrial Law .. ..	2/2/-	Constitutional History 2/2/-
Public Finance .. ..	2/2/-	Roman Law .. 4/4/-
Econ. Geography .. ..	2/2/-	International Law .. 2/2/-
Geography .. ..	4/4/-	Conflict of Laws .. 2/2/-
„ Laboratory Fee ..	2/2/-	Contracts .. .. 4/4/-
Mathematics .. ..	4/4/-	Torts .. .. 2/2/-
Applied Mathematics ..	4/4/-	Criminal Law .. 2/2/-
Actuarial Science .. ..	2/2/-	Property I. .. .. 4/4/-
Calculus .. ..	2/2/-	Property II. .. .. 4/4/-
Computing Methods .. ..	2/2/-	Procedure .. .. 2/2/-
		Evidence .. .. 2/2/-

NOTE.—All these fees are subject to an increase of 10/6 per subject unless paid by Tuesday, 7th April, 1924.

Students whose fees are unpaid on the commencement of the Second Term will be debarred from further attendance at lectures.

\*Students electing to take the lecture on *Greek Art* and one of the lectures on Greek History, Greek Literature or the Set Book may do so on payment of fee of £2/2/-.

4  
4  
3  
7  
4  
3

4 4  
3 3  
7 17  
35 4 4  
24.8

**TIME TABLE.**

120 - 8

121 9

English—Pass	..	Mon., Wed., Fri.	..	5 to 6 p.m.
		Tues. (tutorial)	..	7 to 8 p.m.
Advanced	..	Tues., Thurs.	..	6 to 7 p.m.
		Wed.	..	7 to 8 p.m.
Honours	..	Mon., Wed., Fri.	..	6 to 7 p.m.
Latin—Pass	..	Tues., Thurs.	..	6 to 7 p.m.
		Wed.	..	7 to 8 p.m.
		Mon. (tutorial)	..	7 to 8 p.m.
Advanced	..	Mon., Wed., Fri.	..	5 to 6 p.m.
		Sat.	..	9 to 10 a.m.
Honours	..	Mon., Tues., Thur., Fri.	..	5 to 6 p.m.
		Sat.	..	9 to 10 a.m.
French—Pass	..	Tues., Thur.	..	5 to 6 p.m.
		Fri.	..	7 to 8 p.m.
		Wed. (tutorial)	..	7 to 8 p.m.
Advanced	..	Mon., Tues., Thur.	..	4 to 5 p.m.
		Fri.	..	7 to 8 p.m.
Honours	..	Mon., Tues., Fri.	..	4 to 5 p.m.
		Fri.	..	7 to 8 p.m.
Commercial French	..	Mon.	..	5 to 6 p.m.
		Thurs.	..	6 to 7 p.m.
German—Pass	..	Mon., Wed., Fri.	..	6 to 7 p.m.
		Thur. (tutorial)	..	7 to 8 p.m.
Philosophy—Pass		Mon., Wed., Fri.	..	6 to 7 p.m.
		Thurs. (tutorial)	..	7 to 8 p.m.
Advanced	..	Mon., Wed., Thurs., Fri.	..	5 to 6 p.m.
Honours	..	Tues.	..	5 to 6 p.m.
		Other hours to be fixed.		
Education—Pass	..	Mon., Wed., Fri.	..	4 to 5 p.m.
		Tues. (tutorial)	..	6 to 7 p.m.
Advanced	..	Mon., Tues., Thurs.	..	4 to 5 p.m.
Honours	..	Hours to be fixed.		
Practical Education	..	Hours to be fixed.		
Economics—Pass	..	Tues., Thur.	..	5 to 6 p.m.
		Friday	..	7 to 8 p.m.
Advanced	..	Mon., Tues., Thur., Fri.	..	6 to 7 p.m.
Economic History.		Tues.	..	6 to 7 p.m.
		Wed.	..	5 to 6 p.m.
Statistical Method.		Wed.	..	6 to 7 p.m.
		Thurs.	..	5 to 6 p.m.



Currency & Banking.	..	Mon.	..	6 to 7 p.m.
Banking	..	Mon.	..	7 to 8 p.m.
Currency	..	Mon.	..	7 to 8 p.m.
Economic Geography	..	Mon.	..	7 to 8 p.m.
		Fri.	..	5 to 6 p.m.
History—Pass	..	Mon., Tues., Thurs.	..	7 to 8 p.m.
		Fri. (tutorial)	..	6 to 7 p.m.
Advanced	..	Mon., Wed., Fri.	..	5 to 6 p.m.
Honours	..	Hours to be fixed.		
Modern History for B.Com.	..	Tues., Thurs.	..	7 to 8 p.m.
Mathematics—Pass	..	Mon., Wed., Fri.	..	6 to 7 p.m.
		Thur. (tutorial)	..	7 to 8 p.m.
Advanced I.	..	Wed., Fri.	..	8 to 9 a.m.
		Wed., Thur.	..	6 to 7 p.m.
Advanced II.	..	Tues., Thur., Sat.	..	8 to 9 a.m.
		Mon.	..	4 to 5 p.m.
Honours	..	Hours to be fixed.		
Applied Maths—Pass	..	Mon., Tues.	..	7 to 8 p.m.
		Fri.	..	5 to 6 p.m.
		Wed. (tutorial)	..	7 to 8 p.m.
Geography—Physical	..	Mon., Wed.	..	5 to 6 p.m.
Physics—Pass	..	Tues., Thur.	..	6 to 7 p.m.
		Wed.	..	5 to 6 p.m.
		Mon.	..	5 to 6 p.m.
Advanced	..	Thur.	..	4 to 5 p.m.
		Mon., Wed.	..	6 to 7 p.m.
Honours	..	Hours to be fixed.		
Chemistry—Pass	..	Tues.&Thur.(Inorg.)	..	5 to 6 p.m.
		Sat. (Inorg.)	..	9 to 10 a.m.
		Fri. (tutorial)	..	7 to 8 p.m.
Med.—Intermediate	..	Fri. (Organic.)	..	4 to 5 p.m.
Chemistry—Advanced	..	Mon., Wed.	..	5 to 6 p.m.
		Mon., Fri.	..	4 to 5 p.m.
Honours	..	Hours to be fixed.		
Botany—Pass	..	Mon., Tues., Thur.	..	4 to 5 p.m.
		Tues. (tut.)	..	6 to 7 p.m.
Advanced I.	..	Wed.	..	3 to 4 p.m.
		And other hours to be fixed.		
Advanced II.	..	Thur.	..	3 to 4 p.m.
		And other hours to be fixed.		
Honours	..	Hours to be fixed.		
*Zoology	..			
Pass	..	Mon.	..	3 to 4 p.m.
		Mon., Wed.	..	4 to 5 p.m.
		Fri.	..	5 to 6 p.m.
		Thur.(Tut.)	..	7 to 8 p.m.

Advanced	..	Thur.	..	6 to 7 p.m.
		Fri.	..	3 to 4 p.m.
		And other hours to be fixed.		
Honours	..	Hours to be fixed.		
Geology—Pass	..	Mon., Tues., Thurs.	..	7 to 8 p.m.
		Fri. (tutorial)	..	6 to 7 p.m.
Advanced	..	Tues., Thurs.	..	5 to 6 p.m.
		Fri.	..	7 to 8 p.m.
Psychology—1st Half Session		Mon., Wed., Fri.	..	6 to 7 p.m.
		Thur (tutorial)	..	7 to 8 p.m.
2nd Half Session.	..	Hours to be fixed.		
Geography—Physical		Mon., Wed.	..	5 to 6 p.m.
Con. History & Jurisprudence		Mon., Wed., Fri.	..	8 to 9 a.m.
		Tues. (tutorial)	..	5 to 6 p.m.
Roman Law	..	Tues., Thur., Sat.	..	8 to 9 a.m.
Property, I.	..	Mon., Wed., Fri.	..	6 to 7 p.m.
Contracts	..	Mon., Wed., Fri.	..	5 to 6 p.m.
Property, II.	..	Mon., Wed., Fri.	..	8 to 9 a.m.
Torts	..	Tues.	..	5 to 6 p.m.
Criminal Law	..	Tues.	..	6 to 7 p.m.
Evidence	..	Thur.	..	5 to 6 p.m.
Procedure	..	Thur., Fri.	..	6 to 7 p.m.
International Law	..	Mon., Wed.	..	5 to 6 p.m.
Conflict of Laws	..	Friday	..	5 to 6 p.m.

\*Medical Intermediate Students will fill the requirements for "Biology" by attending Pass Zoology.

Tuesday 10 - 1 Chemistry  
 2 - 4 Botany  
 Thursday 2 - 4 Botany  
 Friday 2 - 5 Chemistry

## TIME TABLE OF LECTURES, ETC.

N.B.—This Time Table may be varied as regards Honours Classes, and other Classes at which the attendance is small.  
 Final arrangements with respect to these Classes cannot be made until the beginning of the Session.

HOURS	MONDAY.	TUESDAY.	WEDNESDAY.	THURSDAY.	FRIDAY.	SATURDAY
A.M. 8-9	Const. Hist. & Jurisp. Property II.	Roman Law Mathematics (Adv. II)	Const. Hist. & Jurisp. Property II. Mathematics (Adv. I)	Roman Law Maths. (Adv. II)	Const. Hist. & Jurisp. Property II. Mathematics (Adv. I)	Roman Law Mathematics (Adv. II)
9-10	...	...	...	...	...	Latin (Adv. & Hons.) Chemistry (Inorg.)
P.M. 3-4	Zoology	...	Botany (Adv. I.)	Botany (Adv. II.)	Zoology (Adv. I.)	...
4-5	Maths (Adv. II) French (Adv. & Hons.) French (Hons.) Education Chemistry (Adv. Inorg.) Zoology & Botany Education (Adv.)	French (Adv. & Hons.) French (Hons.) Botany Education (Adv.)	Education Zoology Botany	French (Adv.) Botany Physics (Adv.) Education (Adv.)	French (Hons.) Education Chemistry (El. Org.)	...

The Biology Laboratory is open from 2 p.m. to 10 p.m. on Monday, Thursday, and Friday; from 2 p.m. to 5 p.m. on Tuesday and Wednesday; from 9.30 a.m. to 12.30 p.m. on Saturday.



5-6	English Latin (Adv.) Latin (Hons.) Philosophy (Adv.) Contracts International Law Physics (Tut.) Chemistry (Adv.) (Phy.) Geography (Physical) Commercial French History (Adv.)	Latin (Hons.) French Philosophy (Hons.) Economics Chemistry (Inorg.) Geology (Adv.) Torts Con. Hist. & Jurisprudence (Tut.)	English Latin (Adv.) Philosophy (Adv.) Chemistry (Adv. Org) Contracts International Law Physics Geography (Physical) Economic History History (Adv.)	Latin (Hons.) French Philosophy (Adv.) (Tut.) Economics Chemistry (Inorg.) Geology (Adv.) Evidence Statistical Method	English Latin (Adv.) Latin (Hons.) Philosophy (Adv.) Economic Geog. Applied Mathematics Contracts Conflict of Laws Zoology History (Adv.)	...
6-7	English (Hons.) German *Philosophy Property I Mathematics Physics (Adv.) Banking	English (Adv.) Latin Education (Tut.) Physics Botany (Tut.) Criminal Law Economic History	English (Hons.) German *Philosophy Economics (Adv.) Property I. Mathematics Calculus Physics (Adv.) Statistical Method Mathematics (Adv. I)	English (Adv.) Latin Physics Procedure Zoology (Adv. II.) Commercial French Economics (Adv.) Mathematics (Adv. I) Calculus	English (Hons.) German *Philosophy Economics (Adv.) History (Tut.) Geology (Tut.) Property I. Mathematics Procedure Greek History, Art & Lit (Tut.)	...
7-8	Latin (Tut.) History Geology Applied Mathematics Economic Geography Greek History, Art & Lit Currency	English (Tut.) History Ap. Mathematics Geology Mod. History (B. Com) Greek History, Art & Lit.	English (Adv.) Latin French (Tut.) Ap. Mathematics (Tut.)	German (Tut.) History Zoology (Tut.) Geology *Philosophy (Tut.) Mathematics (Tut.) Mod. History (B. Com) Greek History, Art & Lit.	French French (Adv.) French (Hons.) Economics Chemistry (Tut.) Geology (Adv.)	...

NOTE.—The Chemistry, and Physics Laboratories are open Daily from 10 a.m. to 1 p.m., and from 2 p.m. to 5 p.m. except Saturdays.

\*Includes Psychology for B.Sc. for 1st ½ session. For 2nd ½ session hours to be fixed.

## CLASSES.

## PRESCRIPTIONS, ETC. FOR 1925.

## ENGLISH LANGUAGE AND LITERATURE.

*Professor Mackenzie.**Mr. H. B. Tomlinson.*

## PASS CLASS.

Hours of meeting:—Mondays, Wednesdays, Fridays, 5 to 6, and Tuesdays, 7 to 8 (tutorial).

Candidates taking the literary option instead of the Old and Middle English will not attend this Class on Wednesdays from 5 to 6, but must attend the lectures on the literary option at an hour to be arranged.

The work of the Class will cover the ground prescribed for B.A., B.Sc. and LL.B. candidates taking English.

Set-books for 1925:—Wordsworth (Golden Treasury Series) Shelley: Adonais; Lamb: Essays of Elia (First Series) Thackeray: Esmond.

Period of Literature 1798 to 1840:—Special attention to be bestowed on: Wordsworth, Coleridge, Byron, Keats, Shelley, Scott, Lamb, Macaulay and Carlyle.

Old and Middle English; Sweet's Anglo-Saxon Primer; Sisam's Fourteenth Century Verse and Prose: I.; III.; IV. B; IV. C; VI.; VIII. A; IX.; X.; XI. A; XII. B; XIII.; XV.; XVII.

The following are prescribed for use in the Class: The Age of Wordsworth (Herford); Saintsbury's First Book of English Literature; Nesfield's English Past and Present; Skeat's Primer of English Etymology; Jones' Pronunciation of English.

Candidates have the option of taking the Old and Middle English, or the following additional set-books:—Coleridge's Christabel; Byron's Child Harold; Shelley's Prometheus Unbound; Carlyle's Heroes and Hero-worship; Browning's Men and Women (Hadow, Clarendon Press), Tennyson's Idylls and Other Poems.

## ADVANCED CLASS.

This Class is intended for candidates for Advanced English and for Senior Scholarships in English.



The work of the Class extends over two years.

Hours of meeting: Tuesdays and Thursdays, 6 to 7, and Wednesdays 7 to 8. Tutorial and other hours to be arranged.

The prescription in Language is as follows:—Questions on the history, structure, philology, and etymology of the English language, the standard to be intermediate between the pass and the honours standard. The elements of Anglo-Saxon grammar as given in Sweet's *Anglo-Saxon Primer*, pp. 1-53. Translation and explanation of passages of Anglo-Saxon prose from Sweet's *Anglo-Saxon Reader* (seventh or later edition), specimens I. to XVIII. inclusive, except XI., XII., and XVI. Translation and explanation of passages in verse and prose from Morris's *Specimens of Early English*, Part I. (1150-1300), specimens X. to XIX. inclusive and of passages of Anglo-Saxon poetry from Sweet's *Anglo-Saxon Reader*, specimens XXI. to XXVI. inclusive. Easy unprescribed passages of Anglo-Saxon prose and Early English verse and prose. 1924: Chaucer's *Man of Law's Tale*; *Words of Host to Physician and Pardoner*; *Pardoner's Prologue*; *Prologue of Second Nun's Tale*; *Poem to same*; *Second Nun's Tale*; *Prologue of Canon Yeoman's Tale*; *Canon Yeoman's Tale*; *Manciple's Prologue*; *Parson's Prologue*. (Skeat's edition, published in one volume, C.P.) 1925: Langland's *Piers the Plowman* (B Text, Skeat's small edition, C.P.).

Period of Literature and Set-books as for Pass candidates.

#### HONOURS CLASS.

This Class meets from 6 to 7 on Mondays, Wednesdays and Fridays and at such other hours as can be arranged to meet the convenience of students.

##### HONOURS IN ENGLISH (Old Course).

(English with another language for Honours).

Prescribed work: as for Pass and Advanced students, and in addition:—

The portions of Sweet's *Anglo-Saxon Reader*, and of Morris's *Specimens of Middle English*, Vol. I., not prescribed for Advanced Students.

Additional set-books for 1925:—Keat's—*Odes*; *Hyperion*; *De Quincey's—Opium Eater*.

##### HONOURS IN ENGLISH (New Course).

(English as a single subject for Honours.)

Candidates must consult the University Calendar for the full prescription and options.



## Specified Old English Books:—

Beowulf.

Two of the Saxon Chronicles 787-1001 (Clarendon Press, 1889).

Christ (Cook's edition—Ginn &amp; Co.).

Widsith (Chamber's edition—Cambridge University Press).

## Specified Middle English:

Havelock the Dane (Skeat's edition).

Gawayn and the Grene Knyght (Early Eng. Texts).

Period of Literature: as for Pass and Advanced candidates, also:—

1925: The Pass and M.A. books and in addition:—Scott—Representative Waverley Novels; Macaulay—Essays; Carlyle—The French Revolution; Coleridge—Biographia Literaria; Hazlitt—Elizabethan Literature and Characters of Shakespeare's plays; Leigh Hunt—Autobiography; Representative Novels of Jane Austen, Peacock, D'Israeli, Dickens and Thackeray.

Period: 1798-1840. Poems of Wordsworth, Coleridge, Shelley, Keats, Scott, Moore, Landor, and the early work of Tennyson and Browning.

**LATIN.***Professor Rankine Brown.**Mr. W. Alexander.*

## PASS CLASS.

This Class prepares for the B.A. Examination of the University of New Zealand, and meets on Tuesdays and Thursdays, 6 to 7 p.m., Wednesdays, 7 to 8 p.m., and Mondays, 7 to 8 p.m. (Tutorial.) Weekly exercises are set in Latin Prose and Sight Translation, and lectures are delivered at intervals.

Set Books:—

Livy V. (Whibley).

Virgil, Aeneid IV.

The following books will also be used:—

Dies Romani (Arnold).

Lower Latin Unseens (Lobban).

In addition to the books specially prescribed for the different Classes, the following are recommended for reference. All students ought to provide themselves with at least the first *three*:—

Gildersleeve and Lodge, Latin Grammar.  
 Meissner's Latin Phrase Book.  
 Mackail's History of Latin Literature.  
 Pelham's Outlines of Roman History.  
 Student's Companion to Latin Authors (Middleton  
 and Mills).  
 Companion to School Classics (Gow).  
 Smith's Classical Dictionary.  
 Lewis and Short's Latin Dictionary.  
 Lewis Elementary Latin Dictionary.

#### ADVANCED AND HONOURS CLASS.

This Class meets on Mondays, Tuesdays, Wednesdays, Thursdays and Fridays, 5 to 6 p.m., and Saturdays 9 a.m. The work in the class is conditioned by the books set for the University Examinations, but is not confined to these. The books set for Advanced Latin are read on Mondays and Fridays, and students taking Latin as an Advanced Subject must attend at these hours.

The special books for Honours are read on Tuesdays and Thursdays. Courses of Lectures are given on Syntax, Literature and History; and weekly exercises are set in Latin Prose, Sight Translation and Syntax.

#### Set Books—Advanced:—

Livy XXV.  
 Plautus, Captivi (Lindsay).  
 Cicero, pro Plancio (Auden).  
 Virgil, Aeneid VIII. (Sidgwick).

#### Honours:—

Livy XXV., XXVI.  
 Plautus, Captivi (Lindsay).  
 Cicero's Letters ed. Pritchard and Bernard.  
 Horace, Satires I. (Gow).  
 Lucretius V. (Duff).  
 Propertius (Postgate).

#### History Period:—

133 B.C. to 31 B.C.

#### For Sight Translation:—

A book of Latin Verse, Garrod (Clar. Press).

**GREEK.***Professor Rankine Brown.*

## PASS CLASS.

The work of this Class is arranged to suit students who are reading for the B.A. Examination. It will meet at least three hours per week at such times as may best suit students, provided that they can come before 5 p.m. For Greek Prose, Arnold (3/6) and Sidgwick (5/-) will be used. Goodwin's Greek Grammar (6/-) is recommended.

Set-books for 1925—Lucian, Somnium, Charon, etc. (Heitland); Homer Iliad I.

## ADVANCED AND HONOURS CLASS.

A class meeting four or five hours per week will be formed as required for students' reading for Honours or Advanced Greek. It cannot be held after 5 o'clock.

Set Books for 1925—Advanced. Herodotus II.; Iliad XXIV.; Thucydides I.; Sophocles, Antigone.

The following books are recommended for reference:—

- Murray's History of Greek Literature.
- Oman's History of Greece.
- Bury's History of Greece.
- Greenidge's Greek Constitutional History.
- Liddell and Scott's Greek Lexicon.
- Liddell and Scott's Greek Abridged.

## PREPARATORY CLASS.

This Class is intended for students who have just begun or are beginning Greek. It will meet probably three hours per week before 5 p.m., at an hour to suit students. The following books will be used:—

- Smith's *Initia Graeca*, part I. (3/6).
- Arnold's Greek Prose (3/6).
- Greek War of Independence (Sonnenschein).



## GREEK HISTORY, ART AND LITERATURE.

Mondays, Tuesdays and Thursdays, 7-8 p.m., and Fridays 6-7 p.m. (Tutorial).

This class deals with the subject as defined in the University Calendar as a Pass Subject for the Arts Degree, and is intended for students who desire to gain some knowledge of Greek life and thought without acquiring familiarity with the Greek language. The set books are studied in approved translations, and as far as possible the lectures will be illustrated by means of slides.

The subject is defined as follows:—

(i.) Greek History down to the death of Alexander with a knowledge of the constitutions of Athens and Sparta.

Text Book—Oman's *History of Greece* (Longmans), or Bury's *History of Greece* (Macmillan).

(ii.) Special knowledge of a Greek historical or philosophical work. For 1925 Thucydides *Speeches* (Murray) VI., VII. (Everyman).

(iii.) Elementary knowledge of Greek Art with special reference to sculpture.

Text Book—E. Gardner: *Handbook of Greek Sculpture*.

(iv.) General knowledge of Greek Literature and special study of selected authors and set books.

For 1925:—

Homer *Iliad*, omitting II.-V., X., XIII., XIV. (Lang, Leaf, etc.)

Euripides, *Hippolytus*, *Bacchae* (Murray).

Aristophanes, *Frogs* (Rogers).

Plato, *Phaedo* (Church).

Herodotus VI. (Everyman).

Aristotle, *Poetics* (Bywater).

**FRENCH.***Professor Boyd-Wilson.**Mlle. L. d'Ery.***1. PASS CLASS.**

The class will meet on Tuesdays and Thursdays from 5 to 6 p.m., on Fridays from 7 to 8 p.m. and on Mondays or Wednesdays 7 to 8 p.m. (oral).

The books read will be: De Tocqueville—*L'Ancien Régime*; R. Bazin—*La Terre qui meurt*; Molière—*Tartuffe*; Lazare—*Half Hours of French Translation*, Part II. Period of Literature: 1845-1885.

**Text Books:—**

Des Granges—*Histoire illustrée de la littérature française.*

Lanson—*Histoire de la littérature française.*

Renault—*Grammaire Française.*

G. G. Nicholson—*Introduction to French Phonetics.*

Dent—*French Phonetic Reader* and A. R. Chisholm—*Manual of French Pronunciation with Phonetic Reading Exercises* (Robertson & Mullens, Melbourne).

The oral examination will consist of reading, dictation, conversation on a set text (Daudet—*Lettres de mon moulin*—Nelson), explanation (lecture expliquée) of a sight passage, and a one-hour paper on phonetics.

**2. ADVANCED CLASS.**

The work in this class will be in part the same as that of the Honours Class. The class will meet from 4 to 5 p.m. on Mondays, Tuesdays and Thursdays. Students in this class attend the lectures on French literature delivered in the Pass Class, Friday 7-8 p.m.

**Text Books:—**

Lanson—*Histoire de la Littérature Française.*

Faguet—*19<sup>ème</sup> siècle.*

Darmesteter—*Historical French Grammar* (Macmillan).

The dictionaries recommended for Advanced and Honours Students are *Petit Larousse Illustré* or *Littre & Beaujean* (Hachette). The *International French-English and English-French Dictionary* of Passy and Hempl (Hinds, Hayden and Eldredge Inc., New York City) is at once a phonetic as well as a general dictionary.



The oral examination will consist of reading, dictation, conversation on a set text Maupassant—Contes choisis (Ollendorff), and explanation (lecture expliquée) of a sight passage.

In addition, the First Year Advanced Class will do a paper on Phonetics from the prescribed book: G. G. Nicholson—Introduction to French Phonetics.

### 3. HONOURS CLASS.

This class will probably meet from 4 to 5 p.m. on Mondays, Tuesdays and from 4 to 5 p.m. and 7 to 8 p.m. on Fridays. For oral test see prescription in N.Z. Univ. Calendar.

### 4. COMMERCIAL CLASS.

This class will meet on Mondays (5-6 p.m.), and Thursdays (6-7 p.m.).

Books set: Glauser and Poole—Com. Fr. Correspondence. Pitman—Com. Fr. Reader. Lazare—Half Hours, Part II.

### 5. ORAL CERTIFICATE.

In connection with the requirements of the University, an oral examination in French will be held at the various centres about the middle of October. The "Pass" Oral Examination consists of reading, conversation, dictation and a paper on French Phonetics. G. G. Nicholson—Introduction to French Phonetics is recommended.

The set text for the conversation is Daudet—Lettres de mon moulin (Nelson).

## GERMAN.

Classes will be formed as required. There will be an elementary class in Science Reading at an hour to be arranged.

## ITALIAN.

A Beginners' Class will be formed, meeting twice a week at hours to be arranged.



**PHILOSOPHY.***Professor Hunter.**Dr. I. L. G. Sutherland.*

N.B.—Students who desire to proceed to the Honours Course in Philosophy are advised to take the subject in their first year and to consult the Professor before arranging their courses.

**I. PASS.**

PSYCHOLOGY *and either ETHICS or LOGIC.*

This course covers, but is not confined to, the work prescribed for B.A. (Pass), LL.B. and the Diplomas of Education, Social Science and Journalism.

Lectures—Monday, Wednesday and Friday 6 to 7 p.m.

Tutorial—Thursday 7 to 8 p.m.

Psychology will be taken during the first half of the session and Ethics or Logic during the second half.

Text Books:—

Woodworth: Psychology. A Study of Mental Life.

Welton & Monahan: Intermediate Logic.

Fullerton: Handbook of Ethical Theory.

**II. PSYCHOLOGY (B.Sc. Pass).**

Students who desire to present Psychology as a subject for the B.Sc. Degree (Pass Grade) will, during the first half of the session, attend the course of lectures in Psychology prescribed for B.A. Pass, and during the second half, attend a course of lectures on the experimental aspects of the subject. These students will also attend the laboratory courses (a) and (b).

Lectures during first half—Monday, Wednesday, Friday 6 p.m. Tutorial Thursday 7 p.m. During second half—hours to be arranged.

Text Book:—

Myers—A Text Book of Experimental Psychology.

## III. ADVANCED.

LOGIC, PSYCHOLOGY, ETHICS AND THE HISTORY OF  
ETHICS.

The arrangement of work in this class is designed to meet the requirements of students who are taking Philosophy at the Advanced Stage for the B.A. Degree or for Senior Scholarship.

The following courses of Lectures will be given:—

A—Advanced Logic on Monday at 5 p.m.

Text Book: Welton: Manual of Logic.

B—Advanced Psychology on Wednesday at 5 p.m.

Text Book: McDougall: An Outline of Psychology.

C—Advanced Ethics on Friday at 5 p.m.

Text Book—Dewey and Tufts: Ethics.

D—The History of Ancient Ethics on Thursday at 5 p.m.

Text-books:—Cushman: A Beginner's History of Philosophy Vol. I.; Aristotle: Ethics.

E—Empirical Logic on Tuesday at 5 p.m.

Text book: Mill: Logic.

F—Social Psychology—hour to be arranged.

Text books: McDougall: Social Psychology; Ginsberg: The Psychology of Society.

NOTE.—The hours of lecture are subject to adjustment at the beginning of the session.

Students in the first year of their advanced work will take courses A, B and C; students in the second year courses D, E, F, and other courses as directed by the Professor.

## IV. HONOURS.

The main work of this class is the study of the History of Philosophy and a consideration of the metaphysical problems raised in Logic, Psychology and Ethics.

Lectures at hours to be arranged at the beginning of the session.

D



Text Books:—Students should consult the Professor before buying text books.

Set Books:—Mill: Logic, Book III.; McDougall: Social Psychology; Aristotle: Ethics, 1-4, 8-10; Bosanquet: Essentials of Logic; Pillsbury: Psychology of Reasoning; Green: Prolegomena to Ethics, Bks. 3 and 4; Hume: Treatise on Human Nature; Kant: Prolegomena.

### PSYCHOLOGICAL LABORATORY.

N.B.—In all courses hours will be fixed at the beginning of the session and every effort made to suit the convenience of students.

The University has prescribed alternative questions in Psychology for B.A. and LL.B. for students who qualify in laboratory work. The courses are arranged as follows:—

(a) PASS B.A. and LL.B.—A course of experiments in the qualitative problems of sensation, perception, mental imagery, association, memory, action, attention, feeling.

Text Book:—

Seashore: Elementary Experiments in Psychology.

(b) PASS B.Sc.—Students presenting Psychology in the B.Sc. Examination will take an additional course in laboratory work.

Text Book:—

Myers: A Text Book of Experimental Psychology, Pt. II.

ADVANCED—A course of experiments in advanced work in the subjects of the Pass course; in simple quantitative methods, in examination of individuals in acuity of the senses, colour vision, tone discrimination, and in general intelligence and mental tests.

Text Book:—

Titchener: Experimental Psychology (Quantitative).

HONOURS—Experiments in more advanced work. Students desiring to undertake work for the thesis of the Honours Course will be given every facility for doing so.



**HISTORY.***Professor F. P. Wilson.**Mr. J. C. Beaglehole.***PASS CLASS.**

This class which covers the work for the B.A. and B.Com. Degrees, meets on Mondays (English History), Tuesdays, and Thursdays (Nineteenth Century), from 7 to 8 p.m. and Fridays 6 to 7 p.m. (tutorial).

The course will deal with the development of the Great powers in the Nineteenth Century, and with the Outlines of English History from 1509 to 1763.

**Text Books:—**

Greenwood: History of the People of England (Vol. II.).

Tickner: Europe since 1789.

Shrimpton and Mulgan: Pakeha and Maori.

External students should read also Green: Short History of the English People, and Fueter: World History.

**ADVANCED CLASS.**

The work covered in the lectures for this class will be the outlines of European History from 1500 to 1715 and the History of the British Colonies to 1772. Hours 5 to 6 p.m. on Mondays, Wednesdays and Fridays.

**Text Books:—**

Johnson: Europe in the 16th Century.

Wakeman: The Ascendancy of France.

Egerton—Origin and Growth of Greater Britain.

Higham—History of the British Empire.

Williamson—Short History of British Expansion.

**HONOURS CLASS.**

Lectures will be given on English and European History at times to be arranged. Reading will be recommended during the course.

Text Books:—Philipps: Modern Europe; Innes: England under the Tudors; Trevelyan: England under the Stuarts; Johnson: Europe in the 16th Century; Wakeman: The Ascendancy of France; Graham: English Political Philosophy; Dunning: Political Theories; Pollock: Introduction to Political Science; Morris: A History of Political Ideas.

**ECONOMICS.***Professor Murphy.**Dr. E. P. Neale.***JUNIOR CLASS.**

ECONOMICS, descriptive and analytic, with special reference to New Zealand conditions; covering, but not necessarily confined to, the requirements of the Commercial Accountants' Examination, the B.A. and B.Com. degrees, the Diplomas in Journalism, Banking and Social Science, and those reading Economics for general information. Three lectures per week, on Tuesdays and Thursdays, 5 to 6 p.m., and Fridays, 7 to 8 p.m. Should a sufficient number of students desire it, a tutorial class will be held on Wednesdays, 7 to 8 p.m.

Text Book:—

Murphy—Outlines of Economics.

Students intending to read for Honours in Economics should join this class in their first academic year, and undertake additional reading to be prescribed as required.

**ADVANCED CLASSES.****COURSE A.**

ECONOMICS.—A more advanced treatment of general Economics than is given in the Junior Class, covering, but not necessarily confined to, the requirements of the B.A. Advanced Grade and papers (a) and (b) in Honours. The work of this class is spread over two sessions, and in 1925 will be concerned mainly with problems of labour and distribution. Two lectures per week, on Thursdays and Fridays, 6 to 7 p.m.

Text Book:—

Taussig—Principles of Economics, Vol. II.



## COURSE B.

CURRENCY AND BANKING.—A general treatment, covering, but not necessarily confined to, the requirements of B.A. Advanced Grade, paper (c) (i.) in Honours, B.Com., and Diploma in Banking. Two lectures per week, one devoted mainly to currency problems, and the other to banking. In 1925 the lectures on Banking will be delivered on Mondays, 6 to 7 p.m., and those on Currency on Mondays 7 to 8 p.m., or such other hour as may be found convenient. Candidates for B.A. Advanced Grade will attend the 6 to 7 p.m. lecture only, candidates for B.Com. or Diploma in Banking will attend both. Reading will be prescribed as required.

## COURSE C.

PUBLIC FINANCE.—The principles of Public Finance and Taxation, as illustrated in the British and New Zealand financial systems; war and post-war finance, local finance; covering, but not necessarily confined to, the requirements of paper (c) (ii.) in Honours. One lecture per week, at an hour to be arranged. This course will not be delivered unless a sufficient number of students are desirous of attending.

Text Book:—

Plehn—Introduction to Public Finance.

## COURSE D.

STATISTICAL METHOD.—A general treatment of Statistical Method covering, but not necessarily confined to, the requirements of paper (d) in Honours, the B.Com. degree, and the Diploma in Journalism. One lecture per week, on Wednesdays, 6 to 7 p.m. During the second term an additional hour (Thursdays, 5 to 6 p.m.), will be devoted to the more practical aspects of the subject.



## Text Books:—

Boddington: Statistics and their Application to Commerce.

King—Elements of Statistical Method.

New Zealand Official Year Book, latest volume.

## COURSE E.

ECONOMIC METHODOLOGY.—The scope and logical method of Economics, the relation of Economics to the other sciences and to contemporary life. Mathematical, mechanical and biological analogies in Economics; covering, but not necessarily confined to, the requirements of paper (*d*) in Honours. One lecture per week, at an hour to be arranged.

## Text Book:—

Keynes: Scope and Method of Political Economy.

## COURSE F.

ECONOMIC HISTORY.—The economic history of England; a general treatment, covering, but not necessarily confined to, the requirements of B.A. Advanced Grade, paper (*e*) in Honours, the B.Com. degree, and the Diplomas in Social Science and Banking. The first series, dealing with the period down to about 1815, will be delivered on Tuesdays, 6 to 7 p.m., and will be spread over two sessions; the second series, dealing with the period from about 1815 to date, will be given on Wednesdays, 5 to 6 p.m. B.A. Advanced candidates will attend the Tuesday lecture only, candidates for B.Com. and Diplomas will attend both series.

## Text Books:—

Bradshaw—Social History of England.

Meredith—Economic History of England.

## COURSE G.

INDUSTRIAL LAW.—The industrial law of New Zealand; the labour protective code in its legal aspect, covering, but not necessarily confined to, the

requirements of the B.Com. degree. One lecture per week, at an hour to be fixed.

All students must possess the following statutes with their amendments:—

The Factories Act, 1921.

The Shops and Offices Act, 1921.

The Wages Protection and Contractors' Liens Act, 1908.

The Workers Compensation Act, 1922.

The Industrial Conciliation and Arbitration Act, 1908.

The Labour Disputes Investigation Act, 1913.

NOTE.—Owing to alterations in the course for the B.Com. degree, this course will not be offered after 1925.

#### COURSE H.

**ECONOMIC GEOGRAPHY.**—A general treatment, covering, and confined to, the requirements of the B.Com. degree. One lecture per week, Fridays 5 to 6 p.m., with an additional lecture on Wednesdays, 5 to 6 p.m., during the second half of the session.

Text Books:—

Howarth—Commercial Geography of the World.

Herbertson, Howarth and Taylor—The World and Australasia.

#### EDUCATION.

*Professor Tennant.*

*Mr. W. H. Gould.*

*Mr. E. K. Lomas.*

#### PASS CLASS.

Monday, Wednesday, Friday, 4-5 p.m.

Tutorial—Tuesday 6-7 p.m.

Lectures will cover the course prescribed for the B.A. Degree, the Teachers "B" Certificate, and in part, that for the Diploma of Education.

Text Books:—

- Paper (a) The School (Findlay).  
 Introduction to Educational Sociology (Smith).  
 Data of Education (Nunn).  
 Paper (b) Hygiene of the School Child (Terman).  
 Mental and Physical Life of School Children  
 (Sandiford).

#### DIPLOMA CLASSES.

Students are asked to communicate with the Professor as to hours, etc.

Text Books:—

- Paper (1) As for Pass.  
 Paper (2) As for Pass.  
 Paper (3) History of Education (Graves or Cubberley).  
 Paper (4) How Children Learn (Freeman).  
 Principles of Class Teaching (Findlay).  
 Paper (5) Experimental Education (New Edition)  
 (Rusk).

Candidates, other than Graduates, are recommended to include in the prerequisites English (literary alternative) Practical Psychology and a biological science. (See University Calendar, p. 97 II. (1)).

#### ADVANCED CLASS.

Monday, Tuesday, Thursday, 4-5 p.m.

Text Books:—

- (a) Democracy and Education (Dewey).  
 (b) Plato's Republic.  
 More's Utopia.  
 The Great Society (Graham Wallas).  
 Sesame and Lilies (Ruskin).  
 (c) Principles of Education (Henderson).

#### HONOURS CLASS.

Hours to be arranged.

Text Books:—

- (a), (b) and (c) As for Advanced.  
 (d) Comparative Education (Sandiford).  
 (e) Sociology (Findlay or Maciver).



**MATHEMATICS, PURE AND APPLIED.***Professor Sommerville.**Mr. D. McLeod.*

I. PURE MATHEMATICS, PASS CLASS for B.A. and B.Sc. Three lectures and one tutorial per week.

Text Books:—

C. Smith—Treatise on Algebra.

Carslaw—Plane Trigonometry, Part I.

Jackson—Elementary Solid Geometry.

✓ Knott—Four-figure Mathematical Tables.

II. APPLIED MATHEMATICS, PASS CLASS for B.A. and B.Sc. Three lectures and one tutorial per week.

Text Books:—

Jessop and Havelock—Elementary Mechanics.

Jessop and Caunt—Elements of Hydrostatics.

III. ADVANCED CLASS, FIRST YEAR. The first part of a two-years course for Advanced Grade B.A. and B.Sc. Four lectures per week. The subjects are: Calculus and Analytical Geometry. Arrangements have been made for students who wish Calculus only to take the Calculus lectures alone as a half-course.

Text Books:—

Fawdry and Durell—Calculus for Schools.

Sommerville—Analytical Conics.

IV. ADVANCED CLASS, SECOND YEAR. The concluding part of the two-years course for Advanced Grade. Four lectures per week. The subjects are: Advanced Algebra, Calculus, etc., and Pure Geometry; Advanced Mechanics.

Text Books:—

C. Smith—Treatise on Algebra.

Askwith—Pure Geometry.

Loney—Dynamics of a Particle and of Rigid Bodies.

Loney—Statics.

V. HONOURS CLASS.

Text Books:—

Piaggio—Differential Equations.

Bell—Co-ordinate Geometry of Three Dimensions.

M'Clelland and Preston—Spherical Trigonometry.  
 Loney—Dynamics of a Particle and of Rigid Bodies.  
 Loney—Statics.  
 Barlow and Bryan—Mathematical Astronomy.  
 Heath—Geometrical Optics.

VI. COURSE IN COMPUTING METHODS. This course is arranged to meet the needs of surveyors and others, and will deal with such subjects as Interpolation, Method of Least Squares, Harmonic Analysis, etc. It will meet once or twice a week at hours to be arranged.

Text Book:—

Whittaker and Robinson—The Calculus of Observations.

## CHEMISTRY.

*Professor Robertson.*

*Mr. A. D. Monro.*

### 1. GENERAL COURSE.

Candidates for B.A. and B.Sc., Medical Intermediate and Engineering Entrance are advised to take this course. Medical Students should also take the course in Elementary Organic Chemistry.

This Class meets on Tuesdays and Thursdays, 5 p.m., Saturdays, 9 a.m., Fridays, 7 p.m. (revision).

Text Books:—

Senter—A text-book of Inorganic Chemistry, *or*

Mellor—Modern Inorganic Chemistry, *or*

Denham—Inorganic Chemistry.

Lewis—Elements of Organic Chemistry.

### 2. ELEMENTARY ORGANIC CHEMISTRY.

Fridays at 4 p.m.

Text Books:—

Remsen—Organic Chemistry, *or*

Cohen—Organic Chemistry, *or*

Perkin and Kipping—Organic Chemistry.

### 3. ADVANCED COURSE.

Candidates in their first year should attend the lectures on Elementary Organic Chemistry, Fridays, 4 p.m., and on Advanced Inorganic Chemistry, Mon-



days, 4 p.m.: to keep terms it is necessary to pass in both divisions of the subject.

Candidates in their second year should attend the lectures on Advanced Organic Chemistry, Wednesdays, 5 p.m., and on Physical Chemistry, Mondays, 5 p.m.

Text Books:—

Walker—Physical Chemistry.

Wade—Organic Chemistry.

Caven and Lander—Advanced Inorganic Chemistry.

#### 4. HONOURS COURSE.

Hours to be arranged.

A special course of reading will be recommended for each student.

### PRACTICAL CHEMISTRY.

#### 1. PASS COURSE.

A minimum attendance of five hours weekly is required. Any two of the following periods may be chosen: Tuesday and Thursday, 9.30 a.m. to 12.30 p.m.; Friday 2 to 5 p.m.; Saturday, 10 a.m. to 12.30 p.m.; Tuesday, 7 to 10 p.m.; Thursday, 7 to 10 p.m.

Text Book:—

✓ Robertson and Burleigh—Qualitative Analysis.

#### 2. ELEMENTARY ORGANIC CHEMISTRY.

Thursdays, 9.30 a.m. to 12.30 p.m. Students unable to attend at these hours may carry out the work at some other period by arrangement with the professor.

#### 3. ADVANCED COURSE.

Mondays, Wednesdays, and Fridays, 2 to 5 p.m., Saturdays, 9 a.m. to 12.30 p.m.; other times by arrangement.

Text Books:—

Cohen—Practical Organic Chemistry.

Findlay—Practical Physical Chemistry.

Cumming and Kay—Quantitative Analysis.



**PHYSICS.***Professor Florance.**Miss Marwick.***1.—PASS CLASSES.**

These classes cover the work prescribed for the Pass B.A. and B.Sc., Medical Intermediate, and Engineering Preliminary Syllabuses.

The classes are divided into two courses for the convenience of those who desire to take two years over their study.

Intending students, particularly those who wish ultimately to take "Advanced" Physics are recommended to consult the Professor before the commencement of the classes.

**FIRST COURSE.**

Two lectures weekly on General Physics, Properties of Matter, Sound and Light; Mondays and Wednesdays 5 to 6 p.m.

**SECOND COURSE.**

Two lectures weekly on Heat, Magnetism and Electricity; Tuesdays and Thursdays 6 to 7 p.m.

Text Books:—

Duncan and Starling's *Physics* or  
Watson's *Intermediate Physics*.

**ADVANCED CLASSES.**

Two courses (a) and (b) at times to be arranged.

(a) Lectures twice weekly on General Physics, Properties of Matter, Heat, Sound and Light.

(b) Lectures twice weekly on General Physics, Properties of Matter, Electricity and Magnetism.

Text Books:—

(a) and (b) Watson's *Physics*;  
Wagstaff's *Properties of Matter*.

(a) Edser's or Poynting and Thomson's *Heat*.

Houston's Light.  
 (b) Hutchinson's Adv. Text-book of Electricity and Magnetism.  
 Starling's Electricity and Magnetism.

### 3.—HONOURS CLASSES.

Times and Books to be arranged.

## PRACTICAL PHYSICS.

### PASS CLASS.

This class is held Monday 7 to 10 p.m.; Tuesday 2 to 5 p.m.; Wednesday 7 to 10 p.m.; Thursday 2 to 5 p.m.; Saturday 9 a.m. to 12.30 p.m.

The practical work is divided into two courses in the same manner as the Pass Lectures. Each student is expected to complete the course of experiments set.

Those students wishing to complete their study in one year will attend two of the above periods per week and those taking two years over their study will attend at least one period per week in each year.

All students will be required to keep neat and concise, but adequate, notes of their experimental work; these will be marked every week.

Text Book:—

Allen & Moore's Practical Physics.

### 2.—ADVANCED CLASSES.

Students of these classes must do at least six hours practical work per week.

Text Book:—

Watson's Practical Physics.

### 3.—HONOURS COURSES.

Students will be encouraged to undertake an original investigation and will be given an opportunity of workshop practice during the day.

## 4.—RESEARCH.

The laboratory is well equipped for certain classes of original investigation and every facility possible will be afforded to those who undertake research work.

**GEOGRAPHY (for B.A.)**

Two half-courses, as under, are arranged for students preparing for the B.A. pass examination.

**PHYSICAL GEOGRAPHY.**

*Professor Cotton.*

Lecture hours: Mondays and Wednesdays, 5 to 6 p.m.

Three hours a week must be spent at practical work, which may be done on Saturdays (9 a.m. to 12 noon) or at some other hours, to be arranged.

## Text Books:—

Davis—Practical Exercises in Physical Geography (with Atlas).

Cotton—Geomorphology of New Zealand.

Taylor—Australian Meteorology.

Murray—The Ocean.

**ECONOMIC GEOGRAPHY.**

See Course H. under Economics, Advanced Classes.

**GEOLOGY.**

*Professor Cotton.*

**PASS CLASS.**

The class meets on Mondays, Tuesdays, and Thursdays, 7 to 8 p.m.; Fridays, 6 to 7 p.m. (Tut.).

This course will serve as an introduction to the subject, and will prepare for the B.A. and B.Sc. Pass examinations.



Five hours a week should be spent at practical work.

Text Books:—

- Watts—Geology for Beginners.
- Cotton—Geomorphology of New Zealand.
- Marshall—Geology of New Zealand.
- Schuchert—Historical Geology.

The following books will also be found useful:—

- Hatch—Mineralogy.
- Woods—Palaeontology.
- Smith—Minerals and the Microscope.

#### ADVANCED CLASS.

The work for the Advanced B.A. or B.Sc. comprises a lecture-course (two hours weekly) extending over two years, and at least four hours practical work per week must be done in each year.

Text Books—In addition to those listed for the Pass Class the following books will be found useful:—

- Marr—Principles of Stratigraphical Geology.
- Marshall—New Zealand and the Adjacent Islands (Handbook of Regional Geology).
- Shimer—Introduction to the Study of Fossils.
- Hawkins—Invertebrate Palaeontology.
- Hatch—Petrology.
- Harker—Petrology for Students.
- Cole—Mineralogy.

Students are advised to consult the Professor before purchasing text books.

#### HONOURS CLASS.

Courses will be arranged for students preparing for the Honours examinations.

#### FIELD EXCURSIONS.

Field excursions will be arranged, which may be attended by students in all classes.

## BOTANY AND ZOOLOGY.

*Professor Kirk.*

*Miss Pigott, Mr. Maskell.*

### BOTANY.

It is essential that students should provide themselves with text-books, and should read fully and carefully. Every student should come to lectures with some ideas, and with notes as to the difficulties that his preliminary studies have not removed. It is part of the duty of the Professor to help him with these difficulties.

In both lectures and laboratory work due regard will be had to the University syllabus, but work will not be confined to the syllabus.

Students that begin the University Course without any adequate training in Botany should take two years to reach the pass grade.

TEXT-BOOKS.—It is obligatory to have Parker's Lessons in Elementary Biology, and Johnson's Note Book for Practical Botany, or Bower and Vaughan's Practical Botany for Beginners; and one of the following: Strasburger's Text Book of Botany, (3rd or later English edition); Miss A. S. M. Johnston's Botany, Mudge and Maslem's Class Book of Botany; or Bower's Botany of the Living Plant. It is very desirable, indeed almost necessary, that Senior students at least should have Dendy's Evolutionary Biology and Cockayne's New Zealand Plants and their Story.

Instruments—All students must provide themselves with the following instruments at least, a razor for section-cutting, a pair of moulted needles and a pair of forceps with fine points. It is very desirable that every student should have a pocket lens. Students that have not Johnson's Note Book must have a laboratory drawing-book, with alternate pages ruled for notes.

ADVANCED AND HONOURS CLASSES—The times for these classes are not in all cases definitely fixed. There will generally be two lectures a week and at least one



discussions class a week. It is necessary that students attending these classes should have Strasburger's Botany and Dendy's Evolutionary Biology.

Students of Botany, whether formally attached to the College or not, may obtain from the Professor permission to refer to the late Mr. T. Kirk's herbarium of New Zealand Flowering Plants, and to the late Dr. Knight's herbarium of Lichens (presented to the college by Mrs. Knight).

### ZOOLOGY.

It is essential that students should provide themselves with text-books, and should read fully and carefully. Every student should come to lecture with some ideas, and with notes as to the difficulties that his preliminary studies have not removed. It is part of the duty of the Professor to help him with these difficulties.

In both lectures and laboratory work due regard will be had to the University syllabus, but work will not be confined to the syllabus.

Students that begin the University Course without any adequate training in Zoology should take two years to reach the pass grade.

TEXT BOOKS—It is obligatory to have Thomson's Outlines of Zoology, Marshall and Hurst's Practical Zoology and Marshall's Frog. It is highly desirable that every student should have also Dendy's Evolutionary Biology and Hewitt's House Flies and How they Spread Disease.

ADVANCED AND HONOURS CLASSES—Honours Students must have Parker and Haswell's Zoology (2nd Edition), and should consult the Professor about other books.

Students should supply themselves with the following appliances:—A drawing book with alternate pages ruled for notes. Two pencils—one hard and one soft. Dissecting instruments—scissors, forceps, scalpels (2), mounted needles, seeker, razor with straight edge (better not hollow-ground), pocket magnifying-glass.



**LAW.****1. JURISPRUDENCE AND CONSTITUTIONAL HISTORY.***Professor Adamson.**Mr. H. H. Cornish.*

This class will meet on Mondays, Wednesdays, Fridays, at 8 a.m., and Tuesdays 5 to 6 p.m. (tutorial.) Lectures will be delivered during the first half of the Session on Jurisprudence, and during the Second on Constitutional History.

Text Books:—

Salmond's Jurisprudence.

Taswell Langmead's Constitutional History of England.

Thomas's Leading Cases in Constitutional Law (for reference).

**2. ROMAN LAW.—Professor Adamson.***Mr. H. H. Cornish.*

A course of three lectures a week will be given on the history of Roman Law and the Institutes of Justinian.

This class meets on Tuesdays, Thursdays, and Saturdays at 8 a.m.

Text Book:—

Moyle's Institutes of Justinian.

**3. INTERNATIONAL LAW AND THE CONFLICT OF LAWS.***Professor Adamson.*

A course of two lectures a week on Mondays and Wednesdays at 5 p.m. will be delivered on International Law.

Text Book:—

Smith's International Law (Phillipson's Edn.)

Pitt Cobbett's Cases on International Law (for reference).

A course of one lecture a week will be delivered on Fridays at 5 p.m. on Conflict of Laws.

Text Book:—

Dicey's Conflict of Laws.

## ENGLISH AND NEW ZEALAND LAW.

*Professor Garrow.*  
*Mr. G. G. Watson.*  
*Mr. A. M. Cousins.*  
*Miss G. McKay.*

## 4. THE LAW OF CONTRACT.

Three lectures a week will be given on Mondays, Wednesdays, and Fridays, 5 to 6 p.m.

Text Book:—

Anson's Law of Contract.

## 5. THE LAW OF TORTS AND CRIMINAL LAW.

One lecture a week will be given on each of these subjects: Torts on Tuesdays, 5 to 6 p.m., and Criminal Law on Tuesdays, 6 to 7 p.m.

Text Books:—

Salmond on Torts.

The Crimes Act (Annotated), Garrow.

Kenny's Outlines of Criminal Law.

N.Z. Justices' Manual (Riddell and Holmes).

## 6. THE LAW OF PROPERTY.—PART I.

Three lectures a week will be given on Mondays, Wednesdays, and Fridays, 6 to 7 p.m.

Text Book:—

Law of Property, Vol. I. (Garrow).

## 7. THE LAW OF PROPERTY.—PART II.

Three lectures a week will be delivered on Mondays, Wednesdays and Fridays, 8 to 9 a.m.

Text Book:—

Law of Trusts (Garrow).

## 8. THE LAW OF EVIDENCE.

One lecture a week, on Thursdays, 5 to 6 p.m.

Text Books:—

Phipson's Law of Evidence.

Cockle's Leading Cases on Evidence.

## 9. THE LAW OF PROCEDURE.

Two lectures a week, on Thursdays and Fridays,  
6 to 7 p.m.

Text Books:—

Stout and Sim's Practice and Procedure of the  
Supreme Court of New Zealand.

For lists of Statutes required in Classes 4-9, see LL.B.  
Syllabus (N.Z. University Calendar).

## AGRICULTURE.

*Professor G. S. Peren.*

## 1. PASS CLASS FOR B.A.

Lectures will cover the syllabus prescribed for  
Agriculture as a Pass subject for the Degree of B.A.

Lecture hours and practical work to be arranged;  
but no lectures on applied subjects will be given  
after 5 p.m.

Text Books:—

Strasburger—Text-book of Botany.

Duggar—Fungous Diseases of Plants.

Thomson—Outlines of Zoology.

Wood and Marshall—Physiology of Farm Animals.

Lyon and Buckman—The Nature and Properties of  
Soils.

Hall—Fertilisers and Manures.

## 2. ADVANCED CLASS FOR B.Sc.

Lectures will cover the syllabus prescribed for  
Agriculture as an Advanced subject for the B.Sc.  
Degree.

Lecture hours and practical work to be arranged;  
but no lectures on applied subjects will be given  
after 5 p.m.

Text Books:—

Lyon and Buckman—The Nature and Properties of  
Soils.

Percival—Fertilisers and Manures.

Levy—The Grasslands of New Zealand.

Babcock and Clausen—Genetics in Relation to Agri-  
culture.



Henry and Morrison—Feeds and Feeding.  
 Eckles—Dairy Cattle and Milk Production.  
 Perry—Sheep Farming in New Zealand.  
 Hawkesworth—Australasian Sheep and Wool.

### 3. CLASS FOR B.AG.

Lectures will cover the course prescribed for the Degree of B.Ag.

Lecture hours and practical work to be arranged; but no lectures on applied subjects will be given after 5 p.m.

Text Books:—

Lyon and Buckman—The Nature and Properties of Soils.  
 Russell—Soil Conditions and Plant Growth.  
 Hall—Fertilisers and Manures.  
 Percival—Agricultural Botany.  
 Piper—Forage Plants and Their Culture.  
 Carlton—The Small Grains.  
 Levy—The Grasslands of New Zealand.  
 Davenport—Principles of Breeding.  
 Babeock and Clausen—Genetics in Relation to Agriculture.  
 Kellner—The Scientific Feeding of Animals.  
 Henry and Morrison—Feeds and Feeding.  
 Eckles—Dairy Farming in New Zealand.  
 Perry—Sheep Farming in New Zealand.  
 Hawkesworth—Australasian Sheep and Wool.  
 Van Slyke—Modern Methods of Testing Milk.  
 Strasburger—Text-book of Botany.  
 Lohnis—Text-book of Agricultural Bacteriology.  
 Russell—The Micro-Organisms of the Soil.  
 Conn—Practical Dairy Bacteriology.  
 Duggar—Fungous Diseases of Plants.  
 Stevens and Hall—Diseases of Economic Plants.  
 Hayes and Garber—Breeding Crop Plants.  
 Thomson—Outlines of Zoology.  
 Sanderson and Peirs—Insect Pests of Farm, Garden and Orchard.  
 Wood and Marshall—Physiology of Farm Animals.  
 Leeney—Home Doctoring of Farm Animals.  
 Reid—The Diseases of Farm Animals in New Zealand.

NOTE.—Students are advised to consult the Professor before purchasing text-books.

## LIST OF PUBLICATIONS IN SCIENCE, 1924.

## D. M. Y. SOMMERVILLE,—

The Transit of Mercury, 1924, May 7.

*New Zealand Journ. Sci. Techn.*, vol 6, pp. 338-340.

Note on de Ville's approximate construction of a regular  $n$ -gon. *Math. Gazette*, London, vol. 12 (1924), pp. 96-98.

The regular divisions of space of  $n$  dimensions and their metrical constants.

*Rendiconti del Circolo matematico di Palermo*, vol. 48 (1924), pp. 9-22.

## G. H. CUNNINGHAM.

A critical Revision of the Australian and New Zealand Species of the Genus *Secotium*: *Proc. Linn. Soc.*, N.S.W., 1924, Vol. 49, pp. 97-119.

The Uredinales, or Rust Fungi, of New Zealand: Suppl. to part I., and part II.: *Trans. N.Z. Inst.*, vol. 55, 1924, pp. 1-58.

Second Supplement to the Uredinales of New Zealand: 1, c, pp. 392-396.

The Ustilaginaceae, or "Smuts," of New Zealand, 1, c, pp. 397-433.

A Revision of the New Zealand Nidulariales, or "Birds-nest Fungi," 1, c, pp. 59-66.

Development of *Gallacea Scleroderma* (Cke) Lloyd, *Trans. Brit. Myc. Soc.*, vol. 9, 1924, pp. 193-200.

## LIBRARY REGULATIONS.

1. In the case of disorderly conduct or any breach of the regulations the Librarian may, and in serious cases shall, report the person so offending to the Chairman of the Professorial Board. Any person so reported, if found guilty of any breach of the Regulations, shall be reprimanded and may be excluded from the use of the Library or dealt with in such other way as the Professorial Board may direct.

### HOURS.

2. During the Session the Library shall be open to readers from 9 a.m. to 9.30 p.m. with an interval of an hour at mid-day on all week days except Saturdays, when it shall be open from 9.30 a.m. to 12.30 p.m.

3. The Library shall be closed on Sundays, on public holidays, and at such other times as the Professorial Board may direct.

4. Regulations will be issued from time to time for the use of the Library during recess.

### ADMISSION FOR READING PURPOSES.

5. The following persons shall be entitled to use the Library for reading purposes:—

- (a) Members of the College Council.
- (b) Members of the Teaching Staff.
- (c) Students who have paid the College fee for the current year.
- (d) Graduates of any University, and persons engaged in Research work, and any other persons; provided that in every case permission shall have been granted by the Library Committee of the Professorial Board.

NOTE.—Persons using the Library under (c) and (d) shall every session first present to the Librarian a Library card for the current year, to be obtained from the Registrar.



## CONDUCT OF READERS IN THE LIBRARY.

6. (a) The use of pens and ink in the Library is strictly prohibited except at tables provided for the purpose.  
(b) Silence must be observed in the Library.  
(c) Communications with other readers should be avoided: applications for information, etc., should be made to the Librarian.
7. No books are to be removed from the Library except as provided in Regulations 10, 11 and 12.
8. Books removed from the shelves by readers must be left on the tables in the reading rooms, except Law reports, which shall be replaced in the shelves.

9. Readers are particularly cautioned against injuring books belonging to the Library by writing in the margin, marking or turning down the leaves, or otherwise disfiguring them.

## BORROWING BOOKS.

10. Members of the College Council and the Professors and Lecturers of the College may borrow any volumes provided:
  - (a) That entry of each volume so borrowed be made, dated, and signed, by the borrower, in the Ledger provided for the purpose.
  - (b) That volumes specified in Regulation 13 be retained by borrowers not longer than one week, and that no volume be retained for more than two months except during the long vacation.
11. Any other member of the Staff may borrow volumes except those volumes specified in Regulation 13, provided:
  - (a) That entry be made as in Regulation 10.

- (b) That not more than 5 volumes be in his possession at one time and that no volume be retained for more than one month except during the long vacation.

12. Any other person privileged under Regulation 5 for reading purposes may **on application to the Librarian** borrow books at hours notified on the Library notice-board, provided:

- (a) That a deposit of One Guinea be made with the Librarian which shall be returned to the depositor when he ceases to avail himself of the privilege of borrowing books provided he has returned undamaged all books borrowed by him: provided that a Professor's written voucher shall be accepted in lieu of a deposit of One Guinea.

- (b) That not more than two volumes be in his possession at one time and that no volume be retained for more than 14 days: provided that on the written request of a Professor or of an Independent Lecturer any Honours or Research student or student doing advanced work may take out five volumes at one time, no volume to be retained for more than one month.

13. Save as provided in Regulation 10, encyclopædias, dictionaries, law reports, prose translations of the classics, books containing valuable engravings, works with loose plates or maps, periodicals which have been less than a fortnight in the Library, may not be borrowed from the Library. Provided, always without prejudice to Regulation 10, that text-books prescribed for the current year, and books listed as specially in demand, may be withheld, lent, or recalled by the Librarian. A book so recalled must be returned within three days.



14. A Request Book shall be provided in which the names of those wishing to obtain books in circulation, the titles of the books and the date of request may be entered. Any book which has been entered in the request book shall be returned on the demand of the Librarian within three days.

15. The borrower shall be liable for any damage a book may have sustained whilst in his keeping.

**16. No book belonging to the Library shall be privately lent by any borrower, except those specified in Regulation 10.**

17. All books and publications of every kind shall be returned on or before February 1st in each year, and during the eight days immediately following the Library shall be closed; provided that members of the staff who desire to retain books in their possession during this period may do so on furnishing a list of such books to the Librarian on or before February 1st, and that members of the staff may also borrow books during the same period on application to the Librarian.

NOTE.—Reciprocal arrangements have been made with the Wellington Philosophical Society, whereby Students of the College can visit the library of that Society and consult books and periodicals, on production of a card from the College Librarian.

Current numbers of *Mind*, *Psychological Bulletin and Review*, *International Journal of Ethics* and *Journal of Educational Psychology* should be consulted at the Public Library.



## UNIVERSITY SCHOLARSHIPS AND PRIZES, ETC.

N.B.—The following list gives the University Scholarships and prizes open to Students of Victoria University College. For the conditions students must consult the calendar of the University of New Zealand. [The page references are to the University Calendar of 1924] :—

### SENIOR SCHOLARSHIPS.

One Senior Scholarship (of the value of £60) is given annually by the New Zealand University in each of the following subjects:—

Latin	Pure and Applied	Mental and Moral
Greek	Mathematics	Philosophy
English	Chemistry	Economics
French	Physics	History
German	Botany	Law
	Zoology	Education
	Geology	

Last day of Entry, May 1st.

(University Calendar, p. 42).

### SCHOLARS

(last three years only)

Bickerton, W. M. (Extra Scholarship)	Philosophy	1922
Campbell, Beatrice, M.S.,	Mathematics	1922
*Heine, Hilda G.,	German	1922
Joiner, W. A. (Extra Scholarship)	Chemistry	1922
Rogers, M. N.,	Physics	1922
Williams, D. O.,	Economics	1922
†Castle, Una D.,	Greek	1923
Richardson, H. L.,	Chemistry	1923
‡Syme, R.,	Greek	1924
Goodall, S. I.,	Law	1924

\* Qualified also for the Scholarship in English.

† Qualified also for Scholarship in French.

‡ Qualified also for Scholarships in Latin and French.

## JOHN TINLINE SCHOLARSHIP (£60).

Awarded annually on the results of the Senior Scholarship Examination in English (University Calendar p. 44) :—

## SCHOLAR.

Wiren, S. A. . . . . 1919

THE 1851 SCIENCE RESEARCH  
SCHOLARSHIP, (£150).

Tenable for two years, and in some cases for three years.

## SCHOLARS.

(University Calendar, p. 49).

T. Rigg, M.Sc., Chemistry . . . . . 1912  
P. W. Burbidge, M.Sc., Physics . . . . . 1913  
J. G. Myers, M.Sc., Biology . . . . . 1924

## RHODES SCHOLARSHIP

The Professorial Board of Victoria University College has the power to nominate one candidate every year for the Rhodes Scholarship. The nomination shall be made subject to the following regulations:—

(1) Candidates must lodge their applications with the College Registrar not later than July 15th.

(2) Applications must contain a statement of the applicant's career both at school and at the University, and should include details both of academic attainments and of the other qualifications referred to in the New Zealand University Calendar, pp. 51-54.

(3) The Professorial Board, before selecting the nominee, shall refer all the applications to the Students' Association for an expression of opinion on the merits of the respective candidates under the headings (2), (3) and (4) in the University Calendar, p. 52.



(4) Before announcing the nomination the Board shall give the Students' Association an opportunity of making representations to the Board.

SCHOLARS

Robertson, P. W., M.A., M.Sc.	..	..	1905
MacDougall, A., M.A.	..	..	1908
Hudson, Athol, B.Sc.	..	..	1916
Meldrum, A. F., LL.B.	..	..	1917
Mackenzie, H. A., B.A.	..	..	1918
Miller, H. G., M.A.	..	..	1920
Aitken, G. G., B.A.	..	..	1921

POST-GRADUATE SCHOLARSHIP IN ARTS.

A travelling scholarship awarded every year open to Masters of Arts who have taken First or Second Class Honours in Arts Subjects. Value £200, tenable for two years.

(University Calendar, p. 45).

SCHOLARS.

Braddock, Catherine C.	..	..	1919
Sutherland, I. L. G.,	..	..	1920
Heine, Hilda Gertrude	..	..	1924

TRAVELLING SCHOLARSHIP IN FRENCH.

Open to graduates of the University of New Zealand who have taken French at the Advanced Grade. Value £200 per annum, tenable for two years.

(University Calendar, p. 46).

SCHOLAR

Thompson, J., M.A.	..	..	1922
Troup, G. S., M.A.	..	..	1924

THE BOWEN PRIZE.

Offered every alternate year to undergraduates for the best essay on a prescribed subject.

The subject for 1924 will be announced in the University Calendar.

(University Calendar, p. 23).

PRIZEMEN

G. H. Schølefield	..	..	1903
H. E. Evans	..	..	1905
W. Heine	..	..	1913



### THE MACMILLAN-BROWN MEMORIAL PRIZE.

Offered every alternate year to undergraduates for the best imaginative composition in verse or prose on a prescribed subject.

Essays must be sent in by 31st December, 1922.

The subject for 1924, will be announced in the University Calendar.

(University Calendar, pp. 23-24).

#### PRIZEMEN.

W. J. Hunter, .. .. .	1900
S. S. Mackenzie .. .. .	1902
G. H. Scholefield .. .. .	1904
H. E. Evans .. .. .	1906
G. F. Saunders .. .. .	1918

### THE HAYDON PRIZE.

Offered every year to undergraduates for the best essay on a prescribed subject.

Essays must be sent in by 31st December.

Subject for each year announced in the University Calendar for the year.

(University Calendar, p. 25).

#### PRIZEMAN.

J. C. Morrison .. .. .	1910
------------------------	------

### COOK MEMORIAL PRIZE.

Offered yearly to graduates taking Honours in Mathematics and Mathematical Physics, and awarded on the Honours papers.

(University Calendar, p. 25).

#### PRIZEMAN.

R. D. Thompson .. .. .	1916
------------------------	------

### THE HABENS PRIZE.

For the best essay on a prescribed subject. Offered every alternate year to students of the Training Colleges who are matriculated students of not more than three years' standing.

Essays must be sent in by 31st December.

Subjects will be announced in March.

(University Calendar, p. 26).

PRIZE WINNERS.

Myers, Iris H. ( <i>née</i> Woodhouse)	..	..	1918
Fortune, R. F.	..	..	1921

THE SIR JULIUS VON HAAST PRIZE

Offered annually to all graduates of the University taking Honours in Geology.

(University Calendar, p. 27)

THE ARNOLD ATKINSON MEMORIAL PRIZE.

Awarded every alternate year for the best essay on a subject connected with the development of the British Empire.

Open to all undergraduates of the University.

(University Calendar, pp. 27-28).

FREE PASSAGES.

Two first class return passages between Australia and England are offered yearly by the Orient Steamship Co., open to graduates of the University who are proceeding to Europe for the purpose of further study, and who require assistance to enable them to do so. The Union Steamship Co. and Huddart Parker Co. supplement this by extending a similar concession between New Zealand and Australia to the graduates selected.

The New Zealand Shipping Co. and the Shaw, Savill and Albion Co. each offer one passage annually between the Dominion and England.

Applications must be sent in not later than March, 15th.

(University Calendar, p. 59).



Passages have been granted to:—

Taylor, Clara M., M.A.	..	..	..	1911
Fitt, A. B., M.A.	..	..	..	1911
Rigg, T., M.Sc.	..	..	..	1912
Miller, H. G., M.A.	..	..	..	1920
Sutherland, I. L. G., M.A.	..	..	..	1921
North, Esther M., M.A.	..	..	..	1921
Pope, Eleanor A., M.Sc.	..	..	..	1922
Espiner, R. H., M.A.	..	..	..	1922
Aitken, G. G., B.A.	..	..	..	1922
*Williams, D. O., M.A.	..	..	..	1924

\*Declined and subsequently awarded to Miss Hilda, G. Heine, M.A.

### BURSARIES.

Two types of Bursaries are awarded to Students under certain conditions.

The fees of both types of Bursaries are paid up to the value of £20 per annum.

#### (1) UNIVERSITY BURSARIES.

These are awarded to holders of higher leaving certificates or to students who have passed the Entrance Scholarship Examination with credit. (University Calendar, p. 41).

Forms of application may be obtained from the Registrar and should be applied for early in the session.

#### (2) EDUCATIONAL BURSARIES.

These are awarded by the Education Department to holders of a trained teacher's certificate or of a teacher's certificate of a class not lower than Class C.

Forms of application, which may be obtained from the Registrar, must be in the hands of the Senior Inspector of the District on or before 1st March.



## VICTORIA COLLEGE SCHOLARSHIPS.

---

NOTE—The lists of Scholars are for the last three years only. For former Scholars, see 1919 Calendar.

### SIR GEORGE GREY SCHOLARSHIP.

*(Subject to the granting of a vote by Parliament).*

#### REGULATIONS.

1. The Scholarship shall be open to undergraduates whose academic standing does not exceed three years.

2. The subjects of examination shall be chosen from the following:—

- (a) HEAT, SOUND AND LIGHT.
- (b) ELECTRICITY AND MAGNETISM.
- (c) ASTRONOMY.
- (d) GEOLOGY.
- (e) PURE MATHEMATICS.
- (f) MECHANICS AND HYDROSTATICS.
- (g) CHEMISTRY.
- (h) BOTANY.
- (i) ZOOLOGY.

3. Out of the nine possible subjects at least two must be taken and not more than three; and one at least must be taken from the four subjects (a), (b), (c), (d). In awarding the Scholarship the Professorial Board will prefer special distinction in a single subject to a fair knowledge of the two or three subjects selected.

4. The Scholarship will be awarded on the result of the College Annual Examination, with a special practical examination in Natural Science, Chemistry, and Physics, and a special paper in Astronomy.

5. The award of the Scholarship will be announced soon after the College Annual Examination.

6. The Scholarship will not be tenable with any other Scholarship or Exhibition.

7. The Scholar must attend such a course of lectures and do such practical work as shall be approved by the Professorial Board.

8. The Scholar must not during the tenure of his Scholarship undertake any duties that in the opinion of the Professorial Board will prevent him from prosecuting his studies satisfactorily.

9. The Scholarship is of the value of £50, tenable for one year.

NOTE.—Candidates must give in their names to the Registrar not later than the 20th of September.

#### SCHOLARS.

Reader, Vera B.	..	..	..	..	1922
Campbell, Beatrice	M. S.	<i>Proxime</i>	<i>Accessit.</i>		1922
Reader, Vera B.	..	..	..	..	1923
Richardson, H. L.	..	..	..	..	1923
Barnicoat, C. R.	..	..	..	..	1924
Richardson, G. M.	..	..	..	..	1925

#### JACOB JOSEPH SCHOLARSHIPS.

The late Mr. Jacob Joseph bequeathed a sum of £3,000 to Victoria College, in the year 1905, for the foundation of Scholarships. On this foundation two Scholarships of £60, tenable for one year, are open for award annually, under the following regulations:

1. The Scholarships shall be open to students (either men or women):—

- (i.) Whose year of matriculation is not more than five years prior to the year of the award—except in the case of Law students, for whom the corresponding interval shall be seven years:



- (ii.) Who have studied at Victoria College for at least two years, and have completed an Honours course thereat to the satisfaction of the Professorial Board.
- (iii.) Who have been certified by the University of New Zealand to have attained to the standard of Honours.

2. Preference, *ceteris paribus*, shall be shown to students of Law and Experimental Science (including Mental and Moral Philosophy, provided that evidence of sufficient Laboratory work be forthcoming.)

3. The Scholarships shall be awarded on evidence of capacity to undertake original work.

4. The tenure of the Scholarships shall be subject to the following conditions:—

- (i.) A scholar shall undertake original work on a subject of investigation to be approved by the Professorial Board, and shall, during the year of tenure, carry on that work to the satisfaction of the Board.
- (ii.) He shall submit to the Professorial Board a thesis, or other prescribed written record of his work for the Scholarship; and shall state generally in the preface to that thesis, and specifically in notes, the main source from which his information is derived, and the extent to which he has availed himself of the work of others. He shall supply a copy of this thesis for the College Library.

5. Scholars shall receive payment in two equal instalments, the first on August 1st, and the second when the conditions of the Scholarship have been fulfilled,



but the second instalment shall not be paid unless the conditions have been fulfilled within fifteen months of the award. Payments shall be subject to favourable report on the work of the Scholar by the Professorial Board.

6. Applications, in which a statement may be made as to the nature of the original work proposed, shall be sent in to the Registrar by May 1st.

7. The holding of another scholarship shall not debar a student from holding a Jacob Joseph Scholarship.

8. In the event of no scholarship or only one scholarship being awarded in any year, additional scholarships may be awarded in any subsequent year.

#### SCHOLARS.

Cousins, A. M., LL.M.	..	..	..	..	1922
Troup, G. S., M.A.	..	..	..	..	1922
Heine, Hilda G.	..	..	..	..	1923
Joiner, W. A.	..	..	..	..	1923
Yeates, J. S.	..	..	..	..	1923
Goodall, S. I., LL.M.	..	..	..	..	1924
Stewart, J. F., LL.M.	..	..	..	..	1924
Richardson, H. L., M.Sc.	..	..	..	..	1924

#### BRUCE DALL PRIZE.

Awarded to the best student in the Pass Class  
in Physics.

#### PRIZEMAN.

Harding, J. W.	..	..	..	..	1923
----------------	----	----	----	----	------

**NATIONAL RESEARCH SCHOLARSHIPS.**

I. One National Research Scholarship shall be offered each year for each of the four University Colleges affiliated with the University of New Zealand.

II. Such Scholarships shall be awarded to graduates of the four affiliated institutions or to other qualified persons for the purpose of enabling them to carry on independent research in any branch of physical, natural or applied science, or in any branch of economics.

III. A due proportion of such scholarships shall be offered for the purpose of encouraging research in connection with matters relating to the industries of New Zealand.

IV. If in any College two candidates of high merit present themselves, an additional scholarship may with the approval of the Minister of Education, be offered for that College in one year, but in no case shall a scholarship be awarded unless a candidate is deemed thoroughly worthy of the distinction. In case of equality, preference shall be given to candidates undertaking research in connection with matters relating to the industries of New Zealand.

V. Each scholarship shall be of the value of £100 per annum, together with the College laboratory fees, the cost of special apparatus or special books required for the purpose of research, and the actual travelling fares or cost of transit while the scholar is engaged on the work of research.

VI. The Professorial Board of the College shall supervise the work of the scholar, and may appoint a special committee, some of the members of which shall be members of the College staff, to assist in such supervision.



VII. Between the 1st November and the 31st May following, the Professorial Board shall forward to the Chancellor the name of the candidate or candidates (if any), whom it recommends for election to the Scholarship, together with the proposed subject of research; and, as soon as the Chancellor has signified his approval of such recommendation, the said candidate or candidates shall be deemed to be elected.

VIII. Each Scholarship shall be tenable for two years if the holder shall for so long fulfil the prescribed conditions, but the tenure of the Scholarship may be extended to a third year on the recommendation of the Professorial Board.

IX. The scholar shall enrol his name at the college at which the Scholarship is held, and shall begin his work within a period to be named by the Professorial Board, but in no case later than six months after his election to the Scholarship, except with the approval of the Chancellor.

X. The Scholar shall be required to devote his whole time during the tenure of the Scholarship to the work of his research unless, under special circumstances, the consent of the Chancellor on the recommendation of the Professorial Board has been previously obtained in writing.

XI. The amount of the Scholarship shall be paid to the scholar in quarterly instalments, each instalment being paid at the end of the quarter from the date on which the Scholar begins his work, on the receipt of a satisfactory report from the Professorial Board.

XII. The Scholar shall each year send to the Professorial Board, through the Professor in whose department the work is being carried on, a report on the progress of his research.



XIII. The Scholar shall embody an account of the results of his research in a detailed report, which shall be sent, through the Professor in whose department the research is being carried on, to the Professorial Board, and by it to the Chancellor, who shall if he sees fit, cause it to be published in suitable form.

XIV. No publication of the results of the research shall be made by the Scholar unless the Chancellor gives his consent thereto.

XV. The final instalment of the Scholarship shall not be payable until the detailed report of the results has been made, in a form approved by the Professorial Board, to the Chancellor.

XVI. All the results of the research carried on by the Scholar in accordance with the terms of his Scholarship shall be the property of the Government of New Zealand, provided, however, that if the results prove to be of such economic importance as to warrant protection by Letters Patent, only the New Zealand rights shall be reserved to the Government, and the Scholar shall be permitted to reap any pecuniary benefit to be derived from patent rights elsewhere.

## SCHOLARS.

Rogers, M. N.	..	..	..	..	..	1921
Joiner, W. A.	..	..	..	..	..	1922
Yeates, J. S.	..	..	..	..	..	1922

### SARAH ANNE RHODES FELLOWSHIP AND SCHOLARSHIPS.

[The funds for the purposes are derived from a bequest by Mrs. S. A. Rhodes.]

#### REGULATIONS FOR SARAH ANNE RHODES FELLOWSHIP IN HOME SCIENCE.

1. One "Sarah Anne Rhodes Research Fellowship in Home Science," may be offered by the Council of the Victoria University College.

2. The Fellowship shall be open to women graduates of the University of New Zealand or of any other university approved by the Council of Victoria University College.

3. The Fellowship shall be of the value of £400 per annum together with travelling expenses approved by the Council, and shall be tenable for two years. The emolument shall be paid monthly.

4. The Fellow shall undertake research work in some problem of Home Science connected with New Zealand and approved by the Victoria University College Council.

5. The Fellow shall forward to the Council of Victoria University College half-yearly reports on the progress of her research, and the final report on the subject of her research shall be presented in a form suitable for publication.

6. The Council of Victoria University College may require the Fellow to deliver short courses of lectures in one or more of the University Colleges in New Zealand.

7. The Council of Victoria University College may terminate a Fellowship if the Fellow is guilty of misconduct or of the neglect of the duties of the Fellowship.



8. A Fellow is required to devote herself wholly to the objects of the Fellowship and is forbidden to hold any position of emolument, except by the permission of the Victoria University College Council.

9. The date of application for a Fellowship shall be advertised by the Council of Victoria University College.

#### REGULATIONS FOR SARAH ANNE RHODES SCHOLARSHIPS IN HOME SCIENCE.

1. One or more "Sarah Anne Rhodes Scholarships in Home Science" may be offered, as the Council of the Victoria University College has directed.

2. Candidates for the Scholarships must be women who have been resident in New Zealand not less than twelve months and who have kept terms in two subjects at Victoria University College, preference being given to candidates who have kept terms in Botany or Zoology or Chemistry or Physics.

3. A Scholarship shall be tenable for two years, provided that a Scholarship may be withdrawn if the scholar fails to do satisfactory work.

4. A scholar must carry out a course of study in Home Science in a university approved by the Council of Victoria University College.

5. The emolument of the Scholarship shall be:—  
£125 per annum if the scholar pursues her studies in New Zealand.

£250 per annum if the scholar pursues her studies in a country other than New Zealand.

6. Payments of the emolument shall be made quarterly in advance, but the Council may reserve a portion of the last payment until a final satisfactory report is obtained.



7. A scholar is required to furnish half-yearly reports on her work, and such reports shall be accompanied by a certificate from the Professor or Director of the University Department in which the scholar has studied that the work has been done to his satisfaction.

8. A scholar is required to devote herself wholly to the objects of the Scholarship and is forbidden to hold any position of emolument, except by permission of the Council of the Victoria University College.

9. Applications for Scholarships must be in the hands of the Registrar of Victoria University College not later than 31st October in any year. With her application a candidate must forward an outline of her proposed course of study in Home Science and the name of the university in which she desires to pursue it.

10. Candidates shall be required to make a declaration that it is their intention to return to New Zealand at the termination of their Scholarships.

11. Under exceptional circumstances the Council may extend the term of any Scholarship or make a grant for any special expenses of a scholar.

#### SCHOLARS.

Pope, Eleanor Airini, B.Sc.	..	..	..	1921
Reader, Vera B., M.Sc.	..	..	..	1922
Herrick, Miriam M., B.A.	..	..	..	1924

Go  
Co  
Cra  
Buc  
Dal  
Fox  
Bar  
Bro  
Ash  
Cott  
Atki  
Bagl  
Caug  
Doul  
Dow  
Fink  
Fletc

**RESULTS OF COLLEGE EXAMINATIONS.**

OCTOBER, 1924

**SIR GEORGE GREY SCHOLARSHIP.**

Richardson, G. M.

**AGRICULTURE**

Advanced:—First Year.

Stuart, A.

**ENGLISH**

Advanced:—Second Year.

**First Class.**

Goodwin, Mary S. Shirer, Kathleen R. M.

**Second Class.**

Cook, Marjorie A. Mullon, Elmira C. Pope, Eileen M.

Advanced.—First Year

**First Class.**

Craig, Agnes B. Mackenzie, F. Zohrab, A. C.

**Second Class.**Buchanan, Catherine Griffin, A. W. Patterson, Agnes.  
Dalefield, Lydia A. Hadfield, Ernestine M. Roussel, Mary V.  
Fox, Catherine D. Mackenzie, R. H. C.**Third Class.**Bartlett, Cora Lawton, Florence M. Palmer, E. L.  
Brown, J. K.**Pass.****First Class.**Ashby, Edith E. E. Grant, Dorothy C. McCormick, E. H.  
Cottier, W.**Second Class.**Atkins, Edith E. E. Francis, V. F. O. Morgan, Hilda  
Bagley, C. J. Griffin, Elsa A. Osborn, R. W.  
Caughley, F. G. Griffiths, R. C. Rainforth, Frances E.  
Doull, Mavis R. Kilsby, A. S. Shallcrass, Mary.  
Downes, Alice M. Kraft, Linda M. Tanner, Dorothy L.  
Finlayson, J. H. M. McLeod, May Wills, E. P.  
Fletcher, Ella S. McKenzie, J. W.



## Third Class.

Adams, Illa M. C.	Herin, Stella R.	Norris, Bessie
Adams, Leila M.	Hogarth, Elizabeth P.	O'Leary, Ellie M.
Barford, Gweneth M.	Hogg, R.	Olson, Ada M.
Bassett, Reta	Horneman, Eva M.	Parker, Ellen B.
Beardmore, Marjorie E.	Howe, E. L.	Patterson, Katherine M.
Blundell, F. B.	Jackson, H. W.	Pearce, Elsie R.
Bremner, Marion L.	Johnstone, Rita M. E.	Princee, Ngaire B.
Butcher, Dorothy.	Jones, Beatrice P.	Rait, Margaret B.
Butterfield, Dorothy	Kirk, Beth G.	(Non. Mat.)
Callendar, Roselyn V.	Kirk, C. T.	Ratliff, A. J.
Caldwell, G. L.	Knapp, K. E.	Read, Gwen R.
Cameron, Muriel C.	Lamb, Muriel R. H.	Rowse, Marjorie G.
Catherwood, Winifred S.	Lamb, Frances L.	Seymour, Isobel
Cattanach, Agnes E. R.	Leitch, Madeline L.	Smith, C. M. M.
Cousins, K. L.	McGregor, D. B.	Smith, C. C.
Crampton, P. L. A.	McIntosh, A.	Smith, Margaret J.
Davis, Doris D.	McIver, W. L.	Stafford, G. L.
Day, Ruth	McKittrick, Netta J.	Stewart, Alexa C.
Death, Mavis D.	McKittrick, Mary St. U.	Sutch, W. B.
Dowsett, E. H.	McLean, Alexandra M.	Taylor, Phyllis E.
Drummond, Patricia B.	McQuillan, Kathrene M.	Thwaites, Irene E.
Dyer, H. G.	Mewhinney, Nettie E.	Tolley, Hattie T.
Eade, B. N.	Mills, Phyllis C.	Verecoe, G. E.
Eeles, Annie L. N.	Mills, S. M.	Voght, Eileen C.
Elder, Annette M.	Mills, Violet I.	Watson, Margaret A.
Fogelberg, Freda E. L.	Moore, A. L.	Wells, H. E.
Garnett, Doris	Murch, Marion E.	Whitehead, Hedley G.
Gordon, Wilhelmina	Mutter, Mona K.	Wiren, E. C.
Gray, M. O. W.	Nelson, T. B.	
Harris, C. T.	Norris, T.	

## LATIN.

## Advanced:—Second Year.

## Second Class.

Aldis, W. C. A.	Delaney, J. T.	Mayne, R. J.
Cook, Marjorie A.		

## Third Class.

Goodwin, Mary S.

## Advanced:—First Year.

## Second Class.

Blakeney, J. M.	Parker, G. E.	Zohrab, A. C.
-----------------	---------------	---------------

## Third Class.

Brown, J. K.	Craig, Agnes B.	Monerief, Janet L.
Cooley, Mary E.	Dowd, W. A.	Smith, Marion



## Pass.

## First Class.

Rainforth, Frances E.

## Second Class.

Gordon, Wilhelmina

Grant, Dorothy C.

Hamilton, A. K.

Macarthur, I. A.

McCormick, E. H.

Norton, G. R. A.

Osborne, R. W.

Peattle, Jessie M.

Spurdle, F. G.

Wilson, Flora M.

## Third Class.

Hart, W. R.

Hislop, T. H.

Howe, E. L.

Hunn, J. K.

Hunter, Zella H.

Hutton, J. C.

Jervis, Nea C.

Joblin, L. H.

Keall, Edna V.

Kinder, M.

Leech, J. G. C.

Lockett, K. B.

MacGregor, D. B.

McIntosh, G.

McLaughlin, J. J.

McLeod, May

Miles, J. W. Y.

Milnes, Ruby O.

Parker, W. G.

Pillar, Daisy W.

Powell, I. L. J.

Rendle, C. A.

Stockman, J.

Sutch, W. B.

Wills, E. P.

Wylie, W. C.

## GREEK.

## Advanced:—First Year.

## Second Class.

Aldis, W. C. A.

## Pass

## Second Class.

Parker, G. E.

## Third Class.

Rich, E. J.

## Preparatory Class

McCaw, J. C.

Steele, J. T. V.

## GREEK HISTORY, ART, AND LITERATURE

## Second Class.

Hadfield, Dorothy

## Third Class.

Stowe, A. K.

Cahill, B.

Atkins, A. S.

Atkinson, Janet

Bullen, Kitty C.

Caldwell, G. L.

Fletcher, Ella S.

Barling, J. K.

Bartlett, Cora

Chipper, T.

Cooper, W. G.

Cousins, K. L.

Cox, T. P.

Drummond, Patricia B.

Dunn, J. H.

Frazer, C. G.

Fraser, I. W.

Gillespie, N. T.

Gold, D. M.

Goodwin, W. D.

Gray, M. O. W.

M.

A.

G.

Eade, B. N.

Atkinson, Janet

## FRENCH.

**Note:** The class in Oral French is indicated by the figure in brackets.

## Advanced:—Second Year.

## Second Class.

Balham, W. F. C. ((I.)  
Pope, Eileen M. (III.)

Smith, Isabel G. (III.)

## Third Class.

Chapman, Rhoda M. (III.)  
Delaney, J. T. (III.)  
Johnston, L. (III.)

Joiner, Dorothy M. (II.)

Mullon, Elmira C. (III.)

## Advanced:—First Year.

## First Class.

Griffin, A. W. (III.)  
Mackenzie, F. (II.)

Parker, G. E. (II.)

## Second Class.

Blakeney, J. M. (III.)

Whyte, Maisie M. (II.) (Non. Mat.)

## Third Class.

Buchanan, Catherine (II.)  
Cooley, Mary E. (II.)  
Dalefield, Lydia A. (III.)  
Fox, Catherine D. (II.)  
Hadfield, Ernestine M. (III.)

Lawton, Florence M. (II.)  
Mayne, R. J. (III.)  
Patterson, Agnes (III.)  
Palmer, E. L. (II.)  
Smith, Marion E. (III.)

## Pass.

## First Class.

Peddie, G. A. (I.)

## Second Class.

Hadfield, Dorothy (II.)  
Hamilton, A. K. (III.)

Zohrab, A. C. (I.)

## Third Class.

Atkinson, Janet (III.)  
Bassett, Reta (III.)  
Beaglehole, E. (III.)  
Beckett, H. W. (III.)  
Blackburn, Phyllis (III.)  
Brown, Alice G. (III.)  
Bullen, Kitty C. (II.)  
Cattanach, Agnes E. R. (III.)  
Cameron, Muriel C. (III.)  
Cooper, W. G. (III.)  
Cross, Rona (III.)  
Fogelberg, Freda E. E. (II.)  
Gandy, Ethel T. (III.)  
James, C. G. R. (III.)

Mackenzie, R. H. C. (III.)  
McKittrick, Mary St. U. (III.)  
McLeod, May (III.)  
Moore, Marion L. (III.)  
O'Neill, Mary M. (II.)  
Parker, Beryl G. (III.)  
Patterson, Grace M. (III. 1923)  
Sheridan, Zoe T. (II.)  
Stewart, Alexa C. (III.)  
Taylor, Phyllis (III.)  
Thompson, G. A. (III.)  
Wallace, Fairy K. C. (III.)  
Wood, C. E. (III.)

## Oral Certificate only:

Hale, Lily G. (III.)

Whyte, Janet L. (III.)

## GERMAN

## Pass

## First Class.

Heine, Erna M. (I.)

## PHILOSOPHY

## Advanced:—Second Year.

## Second Class.

Sheppard, Olive M.

## Advanced:—First Year.

## Third Class.

Steele, J. T. V.

## Pass.

## First Class.

Fraser, I. W.

Powell, I. L. J.

## Second Class.

Ashby, Edith E. E.  
Astle, Norma  
Barnes, Kathleen R.  
Beaglehole, E.Curry, Cora L.  
Gibbard, D. E.  
Hunter, Zella H.  
James, C. G. R.Macarthur, I. H.  
Millar, Bertha G.  
Parker, G. E.  
Wylie, W. C.

## Third Class.

Allison, Ellen P.  
Blathwayt, J. de V. W.  
Breen, A. J.  
Brosnan, J. D.  
Burns, Marjorie J.  
Bydder, E. C.  
Cahill, B.  
Cameron, Flora M.  
Chatwin, L. A.  
Clark, Maida J.  
Crumpton, Dorothy R.  
Cross, Rona  
Denton, Marjorie C.  
Don, A. W.  
Doull, Mavis R.  
Dowsett, Ruby M.  
Dowsett, E. H.Duff, Alice B.  
Dunn, J. H.  
Elder, Annette M.  
Fitzgerald, G. T.  
Fitzherbert, Fanny L.  
Gillespie, N. T.  
Gold, D. M.  
Goodwin, W. D.  
Gray, Olive  
Griffin, J. R.  
Hadfield, Ernestine M.  
Hardy, S.  
Hart W. R.  
Hawthorn, Florence G.  
Hindmarsh, Margaret K.  
Hobin, W. V.  
Hunn, J. K.Irvine, C. N.  
Jackson, H. W.  
Jenkins, A. E.  
Jervis, Nea C.  
L. King, Kathleen M.  
Leach, J. G. C.  
Lewis, C. B.  
McIntosh, G.  
McLaughlin, J. J.  
McKenzie, J. W.  
M. McQuillan, Kathrene M.  
Mitchell, Lilian M.  
Molony, E. S.  
Murphy, J. F.  
Norton, G. R. A.  
O'Leary, Ellie M.  
Parker, W. G.



Parlane, L. A.	Sheridan, Zoe T.	Veitch, H. C.
Pearce, Elsie R.	Spicer, Helen	Waterworth, Elfrida M.
Pillar, Daisy W.	Sleight, G. F.	Whyte, Margaret C.
Rose, W. E.	Smith, L. N.	Williams, C. J. H.
Ross, Grace	Stunnell, G. R.	
Rubick, Sophia R.	Thompson, Carrie	

**PSYCHOLOGY FOR B.Sc.****Third Class.**

Lattey, Margaret U. (Pr. III.)

**EXPERIMENTAL PSYCHOLOGY****M.A.**

Fortune, R. F.

**B.A. Advanced**

Sheppard, Olive M.

**Pass.****First Class.**

Fraser, I. W.                      Macarthur, I. H.                      Rubick, Sophia R.

**Second Class.**

Elder, Annette M.                      Gray, Olive                      Mitchell, Lilian M.

**Third Class.**

Ashby, Edith E. E.	Hogg, Anna H.	Reece, Kathleen M.
Barnes, Kathleen R.	Hunter, Zella H.	Savage, Valda K.
Cahill, B.	James, C. G. R.	Sleight, G. F.
Costley, Agnes B.	Lewis, C. B.	Smith, L. N.
Denton, Marjorie C.	Massey, H. B.	Thomas, Nancy
Duff, A. J.	Miller, E. C.	Thompson, Carrie
Griffin, J. R.	Mills, G. A.	Tolley, Hattie T.
Hart, W. R.	Paul, Eileen L.	Wylie, W. C.
Henderson, Dorothy M.	Pillar, Daisy W.	

**EDUCATION.****Advanced:—Second Year.****Second Class.**

Simpson, J. A. G.                      Robinson, A. C.

**Third Class.**

Bishop, C. J.	Calman, W. G.	Glover, Naida M.
Brock, C. L.	Francis, V. F. O.	Grono, Cicily C.
Burton, T. H.		

**Advanced:—First Year.****Second Class.**

Haggett, F. G.

MacKay, D.

Scarfe, Elsie S.

**Third Class.**

Adams, Leila M.

Crumpton, Dorothy

R. Olds, E. T.

Boyes, E. E. C.

Fitzgerald, G. T.

Martin-Smith, P.

Bryant, R. C.

Frethey, Anita

McRae, D.

Butterfield, Dorothy

Gray, Lillie

Tanner, Dorothy L.

Clay, D. S.

Hislop, T. G.

Smith, G. C.

Collins, K. A. L.

Mitchell, Lilian M.

Whitehead, H. G.

Crampton, P. L. A.

Mulholland, Sarah L.

**DIPLOMA****HISTORY OF EDUCATION****First Class.**

Gardner, Rua I.

**Third Class.**

Bishop, C. J.

Kirk, Ida M.

McCrea, Mona

Brock, C. L.

**PRINCIPLES OF TEACHING****First Class.**

Gardner, Rua I.

**Third Class.**

Bishop, C. J.

Kirk, Ida M.

McCrea, Mona

Brock, C. L.

**EXPERIMENTAL EDUCATION**

Gardner, Rua I.

**Third Class.**

Gray, Lillie

McCrea, Mona

Tanner, Dorothy L.

Hay, W. J.

Scarfe, Elsie S.

Wilson, Ella C.

**Pass.****First Class.**

Campbell, R. M.

Gardner, Rua I.

Smith, Constance G.

**Second Class.**

Allan, H. F.	Downes, Alice M.	Riske, M.
Barford, Gweneth M.	Finlayson, J. H. M.	Rowse, Marjorie G.
Barnes, Kathleen R.	Fox, Catherine D.	Sleight, G. F.
Beaglehole, E.	Gillies, Catherine M.	Smith, L. N.
Bell, Florence A.	Griffin, Elsa A.	Smith, Margaret J.
Breen, A. J.	Harris, C. T.	Smith, Marion E.
Brown, J. K.	Hawthorn, Florence G.	Spurdle, F. G.
Campbell, A. E.	Hogg, Doris, A.	Stafford, G. L.
Caughley, F. G.	McPherson, Margaret	Wilson, Flora M.
Cooley, Mary E.	Moore, A. L.	Zohrab, A. C.
Curry, Cora L.	Patterson, Agnes	

**Third Class.**

Allison, Ellen P.	Harney, Viti I. R.	Nicholls, J. C.
Ballingall, Eleanor	Herdman, A. L.	O'Donnell, Mary E.
Burke, L. J.	Heyes, N.	Olson, Ada M.
Chipper, T.	Hogarth, Elizabeth P.	Palmer, Ruby O.
Chitney, Isobel E.	Jenkins, A. E.	Purdie, Jessie F.
Clover, Vera J.	Kilsby, A. S.	Rose, W. E.
Costley, Agnes	Kinder, M.	Ross, Grace
Craig, J.	Lamb, Frances L.	Rubick, Sophia R.
Davis, Doris D.	Lamb, Muriel R. H.	Shallerass, Mary
Delaney, J. T.	Landon-Lane, Irene	Sewell, Joyce
Denton, Marjorie C.	Lewis, C. B.	Smith, Kathleen G.
Duff, A. J.	Mewhinney, Nettie E.	Sykes, W. D.
Don, A. W.	Mills, G. A.	Thomson, G. M.
Foley, Rita R.	Millar, Bertha G.	Tolley, Enid M.
Gage, Bessie	Mitcalfe, H. P.	Vooght, Eileen C.
Godfrey, Gwendoline	Moore, Marian L.	Wallace, Fairy K. C. F.
Griffin, A. W.	Moynihan, Mary A.	Wilson, A. M.
Griffin, J. R.	Nelson, T. B.	Wilson, Melvyn I.
Haigh, H. J.	Newling, Muriel M.	White, K. M.
Hancock, B. L.	Newton, Ella M.	Young, C. A.

**ECONOMICS.****Advanced:—Second Year.****Second Class.**

Campbell, R. M.

**Third Class.**

Balham, W. F. C.	Hayes, Dorothy E.	Rendle, C. A.
Brown, Alice G.	McCaw, J. C.	White, A. T.
Grant, C. C.		

**Advanced:—First Year.****First Class.**

Mulholland, Frederica L.



## Third Class.

Arthur, G.	Dumbleton, E. V.	Elliott, Valda K.
	Haldane, G. R.	

## Pass.

## First Class.

Ivory, A. H.

## Second Class.

Astle, Norma	Espiner, E. W.	Mountfort, Jane M.
Barnsdale, Gwynedd	Gilpin, R.	Nevill, A. de T.
Britton, W. L. S.	Lear, T. E.	O'Donnell, L. D.
Campbell, Jean M.	Mitcalfe, H. P.	Werry, E. J.

## Third Class.

Adams, Leila, M.	Gibbard, D. E.	Mitchell, Lilian M.
Aim, E. J.	Gray, Olive	Moir, G. K.
Bennett, W. E.	Haigh, S. A. M.	Munro, W. A.
Bertram, I. W. H.	Hall, W. J.	Nicholls, J. C.
Britland, Ellen S.	Herdman, A. L.	Parker, W. G.
Burke, L. J.	Hislop, T. G.	Phillips, W. J.
Burns, Marjorie J.	Hobin, W. V.	Smith, F. E.
Bydder, E. C.	Kane, J. H.	Spicer, Helen
Callendar, Roselyn V.	Lyford, F. A.	Steele, J. T. V.
Cameron, Flora M.	McClelland, K. B.	Sutch, W. B.
Clark, H. V.	McRae, R. D.	Vercoe, G. E.
Collins, K. A. L.	Merrick, F. S.	White, W. M.
Daniels, E.	Milburn, R. H.	Whyte, Margaret G.
Foley, H.	Miller, A. W.	Wilton, W. F. B.
Freethy, Anita	Milnes, Ruby O.	Young, C. A.
Gardiner, I. S.		

## STATISTICAL METHOD.

## Second Class.

Adam, T. S.	Austad, H. I.	Holdsworth, B. Y.
-------------	---------------	-------------------

## Third Class.

Chapple, L. J. B.	Smith, F. E.	Smith, H. Knowles-
Daniell, L. H.	Scott, H. V.	Thomson, V. A.
Evans, L. J.		

## CURRENCY &amp; BANKING.

## Third Class.

Austad, H. I.	Ivory, G. H.	Smith, H. Knowles-
Evans, L. J.	Lovell, L. E.	Thomas, W. W.
Holdsworth, B. Y.	Smith, F. E.	

**ECONOMIC HISTORY (Commercial Course)****Third Class.**

Haldane, G. R.

**INDUSTRIAL LAW.****Second Class.**

Chapple, L. J. B.

**ECONOMIC GEOGRAPHY.****First Class.**

Thomson, V. A.

**Second Class.**

Adam, T. S.

Espiner, E. S.

Stockman, Eve

Bryant, R. C.

Foley, H. V.

Ward, J. C.

Campbell, Jean M.

Lear, T. R.

**Third Class.**

Barnsdale, Gwynedd V.

Gray, Lillie

O'Donnell, Mary E.

Bertram, I. W. H.

Haigh, S. A. M.

Price, C. J. R.

Daniell, L. H.

Lyford, F. A.

Scarfe, Elsie S.

Fabian, Roma M.

Martin-Smith, P.

Smith, F. E.

Gilliver, A. E.

Mason, F. A.

**COMMERCIAL FRENCH.****Second Class.**

Daniels, E.

Foley, H.

**Third Class.**

Cordery, H. S.

Stockman, Eve

Thompson, V. A.

Price, C. J. R.

**HISTORY****Advanced:—Second Year.****First Class.**

Bruce, Helen M.

Leitch, Madeline L.

Mackenzie, Mary I.

Buchanan, I. V.

**Second Class.**

Chapman, Rhoda M.

Newton, H. E. B.

Smith, Isabel G.

Henderson, Isabel F. M.

Priestley, A. D.

Ward, Rhoda A.

**Third Class.**

Waterworth, Elfrida M.

**Advanced:—First Year.****First Class.**

Hogarth, E. Pauline

**Second Class.**

McQuillan, Kathrene M. Spurdle, F. G.

**Third Class.**

Hobin, W. V.

Read, Gwen R.

Nelson, T. B.

Whyte, Margaret G.

**Pass.****First Class.**

Corkill, Gladys M.

Johnston, Rita M.

Shirer, Kathleen R. M.

Gillies, Catherine M.

McPherson, Margaret

Tanner, Dorothy L.

Goodwin, Mary S.

Paul, F. H.

Hogg, Doris A.

Sheppard, Olive M.

**Second Class.**

Eeles, Annie L. N.

Mills, G. A.

Robbie, R. A.

Hadfield, Dorothy

Morgan, Hilda

Scarfe, Elsie S.

Haldane, G. R.

Mullon, Elmira C.

Smith, Constance G.

Knapp, Marjorie E.

Newling, Muriel M.

Tier, J. E.

McIntosh, A.

Norris, Bessie

Walsh, W. H. P.

Mackenzie, F.

Peattie, Jessie M.

**Third Class.**

Alexander, W. E.

Gardner, J.

McMurray, R.

Amadio, M. C.

Gilliver, A. E.

McRae, R. D.

Arcus, L. H.

Godfrey, Gwendoline I.

Miller, E. C.

Barling, J. K.

Goodall, J. C.

Mills, Phyllis

Beardmore, Marjorie E.

Gray, Lillie

Mills, Violet I.

Blakeney, J. M.

Grono, Cicily C.

Mountjoy, W. J.

Bremmer, Marion L.

Grono, R. N.

Munro, W. A.

Buchanan, Catherine

Hadfield, Ernestine M.

Murch, Marion E.

Burns, Marjorie J.

Hancock, R. L.

Patterson, Katherine M.

Butterfield Dorothy

Hardy, L. P.

Phillips, W. J.

Catherwood, Winifred S.

Harney, Viti L. R.

Preston-Thomas, W. H.

Chitney, Isobel E.

Heine, Erna M.

Purdie, Jessie F.

Clark, H. V.

Heyes, N.

Ratliff, A. J.

Clover, Vera J.

James, C. G. R.

Richardson, G. B.

Collins, K. A. L.

Joblin, L. H.

Seymour, Isabel

Crotty, Marguerite M.

Jones, Beatrice P.

Smith, G. C.

Dalefield, Lydia A.

Kane, J. H.

Steele, J. T. V.

Death, Mavis O.

Lenz, Olive M.

Stunell, G. R.

Duff, Alice B.

McCardle, Olive

Swabey, Caroline M.

Eason, W. J.

McGregor, J. D. B.

Thomas, Nancy

Fielder, L. A.

Mackenzie, R. H. C.

Wilton, W. F. B.

Flower, D. G.

McLean, Alexandria M.

Wingfield, Naomi I.

Frethey, Anita

McMahon, J. V.

Wood, E. C.



## MODERN HISTORY FOR B. COM.

## Second Class.

Scott, H. V. Smith, H. Knowles-

## Third Class.

Bertram, I. W. H.	Foley, H.	Lyford, F. A.
Blake, G. C.	Jenkins, A. V.	Millar, A. W.
Daniels, E.	Lear, T. R.	Thomson, V. A.

## MATHEMATICS

## Honours.

Beggs, Phyllis E. Britland, J. J. M. Leadbetter, M.

## Advanced:—Second Year.

## First Class.

McGregor, Jessie A. Shotlander, L.

## Third Class.

Allan, H. F.	Holt, H. R.	Nevill, A. de T.
Gentry, F. C.	Miller, L. G.	White, A. W.
Halliwell, Charlotte L.		
L.		

## Advanced:—First Year.

## Second Class.

Downes, Alice M. King, G. J. Plank, C. S.  
Harding, J. W.

## Third Class.

Dixon, J. R. Hardie, L. C. Wilson, Flora M.  
Doig, F. M. Lovatt, C. R.

## Pass.

## First Class.

McIntyre, C. Peddie, G. A.

## Second Class.

Cormack, H. W. Davis, L. H. Maclaurin, Margaret S.  
Cunningham, I. J. Gernhoefer, Amy M. Shallerass, Audrey

## Third Class.

Beckett, H. W.	Guntrip, J. W. S.	Roche, Alice M.
Bell, O. D.	Keall, Edna V.	Stafford, G. L.
Blackburn, Phyllis	Lockett, K. B.	Stewart, Alexa C.
Dixon, A. K.	McGregor, A. A. D.	Thompson, G.
Gaby, W. A.	Mill, A.	Thomson, W. H.
Grant, R. L. C.	Myerscough, H. J.	Wall, Eunice M.
Greig, J. C.	Riske,, M.	Waters, D. F.

**APPLIED MATHEMATICS.**

Pass.

**First Class.**

Peddie, G. A.

**Second Class.**Black, R. F.  
Cormack, H. W.Edwards, F. W.  
McKenzie, D. W.

Roberts, C. O. D.

**Third Class.**Calman, W. G.  
Crease, C. F.  
Dixon, A. K.  
Dyer, H. G.Lockett, K. B.                      Shallerass, Audrey  
McGregor, A. A. D.                  Wall, Eunice M.  
Maclaurin, Margaret S. Walpole, E.  
Rogers, C. H.**ACTURIAL SCIENCE**

Thomas, W. W.

**PHYSICAL GEOGRAPHY.****Second Class.**

Barnsdale, Gwynedd, V. Bryant, R. C.

Martin-Smith, P.

**Third Class.**Campbell, Jean M.  
Fabian, Roma M.  
Gilliver, A. E.Gray, Lillie  
Mason, F. A.  
O'Donnell, Mary C.Scarfe, Elsie S.  
Ward, J. C.**PRACTICAL GEOGRAPHY**Barnsdale, Gwynedd V. Gilliver, A. E.  
Bryant, R. C.                      Gray, Lillie  
Campbell, Jean M.                Martin-Smith, P.  
Fabian, Roma M.                 Mason, F. A.O'Donnell, Mary C.  
Scarfe, Elsie S.  
Ward, J. C.**PHYSICS**

(Theory and Practical)

Advanced:—Second Year.

**Third Class.**

Gentry, F. C.

Harrison, W. L.

Advanced:—First Year.

**First Class.**

Harding, J. W.

**Second Class.**

Plank, C. S. (Pr. I.)

**Third Class.**

Grocott, K. D.

Lovatt, C. R.

**Advanced:—First Year.****Practical only.**Anderson, A. T.  
Caughley, F. G.

Haigh, H. J.

McWilliams, M. J.

**Pass.****First Class.**

Cunningham, I. J.

Peddie, G. A.

**Second Class.**Black, R. F.  
Guntrip, J. W. S.  
McIntyre, C.Peddie, J. J. G.  
Rollings, T. P.Smith, Dorothy.  
Wall, Eunice M.**Third Class.**Ainslie, A.  
Bowden, Beryl E. G.  
Creighton, A. B.  
Dixon, J. R.  
Dumbleton, L. J.  
Falkner, H. W.  
Fitzherbert, W. A.  
Grant, R. L. C.Greig, A. M. W.  
Greig, J. C.  
Inder, A. J.  
Jamieson, P. L.  
King, G. J.  
Masters, C. I.  
McGregor, A. D.  
Mill, A.Myerscough, H. J.  
Platts-Mills, Adah H. E.  
Roche, Alice M.  
Rubenstein, S. J.  
Saxton, F. W.  
Thomson, W. H.  
Waters, D. F.  
Welch, J. W. F.**PHYSICS TECHNOLOGY**

Grocott, K. D.

**CHEMISTRY.****Advanced:—Second Year.****First Class.**

Barnicoat, C. R.

Young, R. R. T.

**Second Class.**

Burton, J. V.

**Third Class.**

Forsyth, Minnie A.

**Advanced:—First Year.****First Class.**

Brogan, F. G. A.

Copping, Alice M.

Richardson, G. M.

**Third Class.**

Webber, H. J.



**Pass.****First Class.**

Rollings, T. P. (Pr. I.)

Smith, Dorothy (Pr. II.)

**Second Class.**

Bowden, Beryl E. G.

Hardie, L. C. (Pr. I.)

Campbell, Beatrice M. S. (Pr. III.)

McGregor, A. A. D. (Pr. III.)

Cottier, W. (Pr. II.)

Maclaurin, Margaret S. (Pr. I.)

Davis, L. H. (Pr. I.)

Plank, C. S. (Pr. III.)

Dimond, J. L. (Pr. III.)

Shallerass, Audrey (Pr. I.)

Dixon, J. R. (Pr. II.)

**Third Class.**

Fitzherbert, W. A. (Pr. III.)

Peddie, J. J. W. (Pr. III.)

Greig, A. M. W. (Pr. III.)

Platts-Mills, Adah (Pr. II.)

Frethey, B. H. (Pr. III.)

Pickwell, R. J. (Pr. II.)

Harrison, W. L.

Smith, C. M. M. (Pr. III.)

Joliffe, W. H. (Pr. III.)

Whyte, R. O. (Pr. III.)

King, G. J. (Pr. III.)

Walpole, E. (Pr. III.)

McKenzie, D. W. (Pr. III.)

**Practical only****Third Class.**

Dumbleton, L. J.

Jamieson, D.

Reid, W. D.

Hulme, Lilian M.

Lysaght, Averil M.

Mason, Ethelwyn M.

**ORGANIC CHEMISTRY**  
(for Medical Intermediate)**First Class.**

Smith, Dorothy

**Second Class.**

Bowden, Beryl E. G.

Fitzherbert, W. A.

Greig, A. M. W.

**Third Class.**

Platts-Mills, Adah H. E.

**BOTANY.****Advanced:—Second Year.**

Jackson, Beryl A.

Miller, D.

Neale, Phyllis L.

Joiner, Dorothy M.

**Advanced:—First Year.**

Maskell, F. G.

Neale, Phyllis L.

Whyte, R. O.

Moncrieff, Janet L.

Shallerass, Mary

**Practical only**

Parker, Beryl E.

## Pass.

## First Class.

Knapp, Marjorie E. (Pr. II.)      Stuart, A. (Pr. III.)  
 Oliver, W. R. B. (Pr. I.)

## Second Class.

Fletcher, Ella S. (Pr. III.)      Lock, A. E. (Pr. II.)  
 Kraft, Linda M. (Pr. III.)      Webber, H. G. (Pr. I.)  
 Pillar, Daisy W. (Pr. II.)

## Practical only

## Third Class.

Henderson, Elizabeth M.

## ZOOLOGY.

## Advanced:—Second Year.

Miller, D.

## Advanced:—First Year

Lysaght, Averil M.      Matthews, K. L.      Whyte, R. O.

## Pass.

Moncrieff, Janet L. (Pr. I.)      Smith, Dorothy (Pr. I.)  
 Oliver, W. R. B. (Pr. I.)      Wickens, A. S. (Pr. II.)  
 Rollings, T. P. (Pr. I.)

## Second Class.

Bowden, Beryl E. G. (Pr. I.)      Webber, H. J. (Pr. I.)  
 Thomas, R. J.

## Third Class.

Daggar, J. R. (Pr. II.)      Lock, A. E. (Pr. II.)  
 Hulme, Lillian (Pr. III.)      Saxton, F. M. (Pr. I.)

## Practical only

## Third Class.

Hawken, Dora

## GEOLOGY.

## Advanced:—Second Year.

Battersby, Rose I.

## Advanced—First Year

Dagger, J. R.      Moore, R.

## Pass.

## First Class.

Brogan, F. J. A. (Pr. I.)      Oliver, W. R. B. (Pr. I.)  
 Cottier, W. (Pr. II.)      Richardson, G. M. (Pr. I.)

**Second Class.**

Copping, Alice M. (Pr. II.) Doig, F. M. (Pr. II.)  
 Davis, L. H. (Pr. II.) Stuart, A. (Pr. III.)

**Third Class.**

Joliffe, W. H. (Pr. II.) Roberts, F. K. (Pr. III.)  
 Matthews, K. L. (Pr. II.) Whelan, L. A. (Pr. II.)  
 Mitchell, J. W. E. (Pr. III.) Wickens, A. S. (Pr. II.)

**Practical only**

Lysaght, Averil M. (III.) Reid, W. D. (III.)

**JURISPRUDENCE.****Second Class.**

Caldwell, G L. Goodwin, W. D.

**Third Class.**

Cahill, B.	Irvine, C. W.	Osborn, R. W.
Cousins, K. L.	Jervis, Nea C.	Powell, I. L. J.
Gillispie, N. T.	Macarthur, I. H.	Rhodes, A. B. H.
Gray, M. O. W.	McIntosh, G.	Stockman, J.
Grayling, F. S.	Miles, J. W. Y.	Wylie, W. C.
Hardy, S.	Molony, E. S.	
Hunter, Zella H.	Norton, G. R. A.	

**CONSTITUTIONAL HISTORY.****Second Class**

Molony, E. S.

**Third Class.**

Blundell, F. B.	Hawken, N.	Miles, J. W. Y.
Bullock, H. K.	Hunter, Zella H.	Osborn, R. W.
Cahill, B.	Irvine, C. N.	Powell, I. L. J.
Cousins, K. L.	Jervis, Nea C.	Rothwell, T. F.
Earl, M. J.	Macarthur, I. H.	Stockman, J.
Goodwin, W. D.	McIver, W. L.	Wylie, W. C.

**ROMAN LAW.****Second Class**

Arndt, C. H. Morgan, L. E.  
 Bedingfield, D. L. Craig, Agnes B.

**Third Class.**

Baird, W. G.	Howells, O. J.	Thomson, N. M.
Blathwayt, J. de V. W.	McGahan, M. R. D.	Virtue, D. W.
Burns, H. N.	McRae, A. D.	Wallace, J. F. R.
Cahill, B.	Osborn, R. W.	Webb, E. G.
Cox, T. P.	Powles, G. R.	Wylie, W. C.
Fletcher, W. V. R.	Rothwell, E. F.	
Garbett, J. J.	Stewart, J. L.	



**INTERNATIONAL LAW.****Second Class**

Kent, G. C.

Lockie, J. R.

**Third Class.**

Baird, W. G.  
 Bain, R. G. G.  
 Black, G. C. C.  
 Buchler, A. W.  
 Bullock, H. K.  
 Chaplin, W. T.

Davies, A. N.  
 Davis, O. G.  
 Garbett, J. J.  
 Grayling, F. S.  
 Macduff, J. L.  
 Morgan, L. E.

Stewart, J. L.  
 Thomson, N. M.  
 Virtue, D. W.  
 Wallace, J. F. R.  
 White, J. R.

**CONFLICT OF LAWS.****Second Class**

Lockie, J. R.

**Third Class.**

Baird, W. G.  
 Beckingsale, F. R. N.  
 Bedingfield, D. L.  
 Blathwayt, J. de V. W.  
 Buchler, A. W.  
 Bullock, H. K.

Davies, A. N.  
 Davis, O. G.  
 Garbett, J. J.  
 Grayling, F. S.  
 Harkness, P. G.  
 Kent, G. C.

Macduff, J. L.  
 Morgan, L. E.  
 Thomas, W. W.  
 Virtue, D. W.  
 Wallace, J. F. R.  
 White, J. R.

**CONTRACT.****First Class.**

Allan, C. B.

Arndt, C. H.

**Second Class**

Down, Annie H.

Hjorring, I. L.

Maitland, H. A. E.

**Third Class**

Atkins, C. R. J.  
 Baume, S. E.  
 Burns, R. A.  
 Burridge, V. E.  
 Clark, D.  
 Couper, K. H.  
 Curtis, E. E. S.  
 Dolbel, C. P.  
 Earle, M. J.

Gallagher, J. J.  
 Glasgow, A. J.  
 Hay, W.  
 Hendry, A. A.  
 Hollings, A. M.  
 Lloyd, G. M.  
 Lovell, H. G.  
 Macallan, G.  
 McParland, F. C.

Mitchell, T. F.  
 O'Regan, C. J.  
 Powles, G. R.  
 Rollings, W. P.  
 Smith, P. J. G.  
 Wheeler, A. T.  
 Williams, D. A.  
 Yortt, A. W.  
 Winter, F. D.

**TORTS.****First Class.**

Hjorring, I. L.

O'Regan, C. J.

**Second Class**

Allan, C. B.  
 Buchler, A. W.  
 BurrIDGE, V. E.

Down, Annie H.  
 Hollings, A. M.  
 Lloyd, G. M.

Macallan, G.  
 Paul, J. F.

**Third Class**

Baume, S. E.  
 Campbell, C. C.  
 Cody, J. F.  
 Daniell, Myra D.  
 Dolbel, C. P.  
 Earle, M. J.  
 Eves, E. R. D.

Fletcher, W. V. R.  
 Gallagher, J. J.  
 Hobin, E. M.  
 Hornblow, E. A.  
 Hurley, A. E.  
 James, M. B.  
 McParland, F. C.

Rowse, N. H.  
 Sutherland, R. I. M.  
 Tait, H. P.  
 Taylor, T. G.  
 Wilson, W. E.  
 Winter, F. D.

**CRIMINAL LAW.****First Class.**

Hjorring, I. L.

**Second Class.**

Allan, C. B.  
 Down, Annie H.  
 Hollings, A. M.

Kells, G. J.  
 Macallan, G.  
 Metcalfe, R.

O'Regan, C. J.

**Third Class.**

Allison, J. M.  
 Bannister, H. R.  
 Buchler, A. W.  
 Burns, R. A.  
 BurrIDGE, V. E.  
 Butler, J. J. W.  
 Campbell, C. C.  
 Daniell, Myra D.  
 Eves, E. R. D.  
 Fletcher, W. V. R.  
 Gallagher, J. J.

Gamble, W. B.  
 Hart, I. A.  
 Hay, W.  
 Hendry, A. A.  
 Hobin, E. M.  
 Hornblow, E. A.  
 James, M. B.  
 Kennard, H. A.  
 Kohn, W. C.  
 Lloyd, G. M.  
 Mackay, G.

McParland, F. C.  
 Rowse, N. H.  
 Sharpe, B. R.  
 Sutherland, R. I. M.  
 Tait, H. P.  
 Todd, A. G.  
 Ward, D. G.  
 Whitlock, G. F.  
 Williams, D. A.

**PROPERTY I.****Second Class.**

Allan, C. B.  
 Arndt, C. H.

Hjorring, I. L.  
 Kells, G. J.

Macallan, G.  
 Webb, E. G.

**Third Class.**

Atkin, C. R. J.  
 Buchler, A. W.  
 BurrIDGE, V. E.  
 Chaplin, W. T.  
 Chipper, G.  
 Clark, D.

Cody, J. F.  
 Couper, K. H.  
 Craig, Agnes B.  
 Curtis, E. E. S.  
 Down, Annie H.  
 Gallagher, J. J.

Gamble, W. B.  
 Glasgow, A. J.  
 Graham, L. M.  
 Hart, I. A.  
 Hay, W.  
 Hendry, A. A.

Hollings, A. M.	Maitland, H. A. E.	Sinclair, L. G. H.
Howells, O. J.	Metcalfe, R.	Sinclair, L. H.
King, H. S.	Mitchell, T. F.	Smith, E. B.
Lloyd, G. M.	O'Regan, C. J.	Whitlock, G. F.
Mackay, G.	Powles, G. R.	Williams, D. A.
McParland, F. C.	Rollings, W. P.	Yortt, A. W.

**PROPERTY II.****Practical Certificates in Conveyancing**

Bain, R. G. G.	Dalglish, K. M.	Kent, G. C.
Bedingfield, D. L.	Davies, C. W.	MacDuff, J. L.
Black, G. C. C.	Foster, D. W.	Marshall, P. B.
Bramwell, H. J.	Garbett, A. L.	Phillips, G. C.
Cooper, A. E.	Hamilton, A.	Scott, C. E.
Cowdell, J. H.	Howarth, O. J.	Shepherd, G. P.
Dalglish, D. J.	Howells, O. J.	White, J. R.

**EVIDENCE.****First Class.**

Hjorring, I. L.

**Second Class.**

Kells, G. L.

O'Regan, C. J.

Webb, E. G.

**Third Class.**

Bramwell, H. J.  
 Burke, A. P.  
 Butler, J. J. W.  
 Carruthers, R. J.  
 Chaplin, W. T.  
 Chipper, G.  
 Cowdell, J. H.  
 Cronin, C. F.  
 Dalglish, D. J.  
 Dalglish, K. M.

Davies, C. W.  
 Fletcher, W. V. R.  
 Foster, D. W.  
 Graham, L. M.  
 Hart, I. A.  
 Howarth, O. J.  
 King, H. S.  
 Kohn, W. C.  
 Lloyd, G. M.  
 Lovell, H. G.

Mackay, G.  
 Mitchell, T. F.  
 Reaney, J. H.  
 Scott, C. E.  
 Shepherd, G. P.  
 Sinclair, L. G. H.  
 Sinclair, L. H.  
 Smith, E. B.  
 Wheeler, A. T.  
 Williams, D. A.

**PROCEDURE.****Second Class.**

Dalglish, D. J.

**Third Class.**

Bain, R. G. G.  
 Bedingfield, D. L.  
 Black, G. C. C.  
 Bramwell, H. J.  
 Carruthers, R. J.  
 Cooper, A. E.

Cowdell, J. H.  
 Dalglish, K. M.  
 Garbett, A. L.  
 Howarth, O. J.  
 Howells, O. J.  
 Ivory, A. H.

James, H. J. V.  
 Kent, G. C.  
 Macduff, J. L.  
 Phillips, G. C.  
 Scott, C. E.

The following students, having kept terms in at least two subjects, are recommended for the confirmation of their Provisional Matriculation as from January 1st, 1924:—

Don, A. W.	Mills, S. M.	Ratliff, A. J.
Dowsett, E. H.	Oliver, W. R. B.	Seymour, Isabel.
McKenzie, J. W.		



## ALPHABETICAL ROLL OF GRADUATES

## REFERENCES:

1. First-Class Honours.	i. Bowen Prize.
2. Second-Class Honours.	j. Macmillan-Brown Prize.
3. Third-Class Honours.	l. Cook Prize.
a. Entrance Scholar.	G. Sir George Grey Scholarship.
b. Senior Scholar.	J. Jacob Joseph Scholarship.
c. John Tinline Scholar.	*. Deceased.
d. Exhibition Science Scholar.	A. Post Graduate Scholarship in Arts.
e. Rhodes Scholar.	T. Taranaki Scholar.
h. Research Scholar.	R. Sarah Anne Rhodes Scholar.
2J ACHESON, Frank Oswald Victor.....	LL.M. 1913
a ADAMS, Howard Dartrey Charles.....	LL.B. 1918
ADAMS, Robert Tasman.....	LL.B. 1913
ADKIN, Ethel Marjorie.....	B.A. 1916
e AITKEN, George Gothard.....	B.A. 1922
ab ALLAN, John Aitken.....	M.A. 1921
baG ALLEN, Natalie Constance Bowen.....	B.Sc. 1915
ANDREW, Edith Tangye.....	B.A. 1921
3 ANDREW, William Jeffrey.....	M.A. 1907
* ANDREWS, Edward Weston.....	B.A. 1905
ANSON, Janet Margaret.....	B.Sc. 1920
APLIN, Grace May.....	B.A. 1923
ARMS, George Edward.....	LL.M. 1923
ARMSTRONG, Beryl Gladys.....	B.A. 1919
*aG ARMSTRONG, Purvis Ford.....	B.A. 1914
ARTHUR, Clarence Adolphus.....	LL.B. 1909
ASHCROFT, Basil Davey.....	B.A. 1909
ASTON, Wilfred Burt.....	LL.B. 1913
ATMORE, Charles Frederick.....	LL.B. 1922
BAIRD, William George.....	B.A. 1924
a BAKER-GABB, Mary (née Montgomery).....	B.A. 1905
BALL, Douglas George.....	LL.B. 1924
BALLACHEY, Ernest Harold.....	B.A. 1904
ba2G BARKAS, Mary Rushton.....	M.Sc. 1910
b1 BARNETT, Graham Roy.....	M.A. 1908
BARNETT, Maud.....	B.A. 1913
b3 BARTLEY, Francis William Stanislaus.....	M.A. 1909
BARTON, Cranleigh Harper.....	LL.B. 1915
a BASTINGS, Lyndon.....	B.A., M.Sc. 1921
BATE, Walter Edwin.....	LL.B. 1922
2 BATES, Frederick Arthur.....	M.A. 1913
1 BEAGLEHOLE, Edward William.....	M.A. 1908
1 BEAGLEHOLE, John Cawte.....	M.A. 1924
BEAGLEHOLE, Keith.....	B.Sc. 1924
BEARD, Thomas Edward.....	B.A. 1921
* BECKETT, Wilfred Gibbs.....	LL.B. 1904
BECKINGSALE, Lucy.....	B.A. 1906
BEDINGFIELD, Douglas Sherry.....	B.A. 1908
2 BEE, James.....	M.A. 1889, M.Sc. 1906
1 BEE, John Guthrie.....	M.A. 1907
BEGGS, Phyllis Eileen.....	B.Sc. 1923
BELL, Ethel Mary Williamson.....	B.A. 1917
BENGE, Alfred James Havelock.....	B.A. 1912
BERENDSEN, Carl August.....	LL.B. 1914
b BECKERTON, William Maxwell.....	B.A. 1922
b3 BIGGAR, Robert Hedley.....	M.A. 1911

	BILLENS, Emmie.....	B.A.	1911
	BINGHAM, Fanny Dorothy.....	M.A.	1920
3J	BISLEY, Elizabeth Maggie (née Shirer).....	M.A.	1915
	BLACKER, Henrietta.....	B.A.	1919
	BLAIR, Mary Alice.....	B.Sc.	1902
2	BLAKE, Bert Newman Thornton.....	M.A.	1915
ba2	BOGLE, Bertha Isabel Langley (née Reeve).....	M.A.	1911
*	BOGLE, Gilbert Vere.....	B.A.	1908
	BOLLINGER, Elsie, Margaret.....	M.A.	1908
	BOND, Elon.....	B.Sc.	1916
	BOWATER, Harold Richard.....	M.A.	1922
	BOWLER, Frederick Columbus.....	B.A.	1910
*1AJ	BRADDOCK, Catherine Christina.....	M.A.	1917
a	BRAILSFORD, John Annesley.....	B.A.	1904
	BRASELL, Lena Agnes.....	B.A.	1922
	BRENT, Hubert Cyril.....	B.Sc.	1923
	BRITLAND, Doreen Mary.....	M.A.	1924
	BRITLAND, James Joseph George.....	B.Sc.	1924
	BROAD, Phillip Benedict.....	LL.B.	1913
*1	BROADGATE, Frederick Lawrence King.....	M.Sc.	1915
	BROCK, Charles Lawrence.....	B.A.	1924
	BROCKETT, Arthur Ernest.....	M.A. 1918, B.Com.	1913
ba2	BROCK, Herbert Frank.....	M.A.	1913
	BRODIE, Archibald Douglas.....	LL.B.	1911
	BRODIE, Henry George.....	LL.B.	1922
Gb	BRODIE, John Earle.....	M.Sc.	1921
	BROSNAN, Francis Thomas.....	LL.B.	1922
	BROWN, Alexandra Mary.....	B.A.	1901
	BROWN, Claude Anstice.....	LL.B.	1915
	BROWN, Mary Lillian.....	B.A.	1924
	BROWN, William Binet.....	B.A.	1916
	BROWN, Winton Byron.....	LL.B.	1922
	BROWNE, Maude Josephine.....	B.Sc.	1923
3	BRUCE, Isabella Donnet.....	M.A.	1908
G	BRUCE, Robert Marshall.....	B.Sc.	1916
dba12GJ	BURBIDGE, Percy William.....	M.Sc.	1912
	BURTON, Robert Christian Cooper.....	LL.B.	1924
	BUCKLEY, William Bernard.....	B.A.	1922
	BURNS, Andrew Nisket.....	M.A.	1912
3	BURNS, John Campbell.....	M.A.	1912
	BURRIDGE, Ross Reginald.....	LL.B.	1914
a3	BUTLER, Jessie Marion.....	M.A.	1911
	BYRNE, Joseph.....	LL.B.	1919
	BYRNE, Norman Alexander.....	M.A. 1920, LL.B.	1924
3	CADDICK, Alfred Edward.....	M.A.	1912
	CALDWELL, Kenneth Sholto.....	LL.B.	1915
	CALLIPHONAS, Helen Mary.....	B.A.	1919
1b	CAMPBELL, Beatrice Mary S.....	M.A.	1923
	CAMPBELL, Richard Michelson.....	LL.B.	1923
	CARR, Marjorie Halstead.....	B.A.	1924
	CARREL, Vida Doris.....	B.A.	1923
	CARROLL, Kathleen Annie.....	M.A.	1924
	CARTER, Norman Robey.....	B.Sc.	1924
	CARVER, Henry George.....	B.A.	1924
a3	CASEY, Ellen Christine.....	M.A.	1912
*3	CASTLE, Arthur Penfold.....	M.A.	1913
	CASTLE, John George Thomas.....	M.A.	1913
b1	CASTLE, Una Doreen.....	M.A.	1924
ba1J	CATHIE, Winifred Agnes.....	M.A.	1918
	CHAPMAN, Louisa Jane.....	B.A.	1918
	CHAPPLB, Leonard James Bancroft.....	B.A.	1921



	CHARLES, Leonard Andrews.....	LL.B.	1921
	CHARTERS, Alexander Burnett.....	M.A.	1909
a	CHRISTIE, Elliott Martin.....	B.Sc.	1920
	CHRISTIE, James.....	LL.M.	1915
	CHRISTIE, Roy Cameron.....	LL.B.	1923
2	CLACHAN, Mary Crawford.....	M.A.	1915
	CLARK, Maida Jessie.....	B.A.	1924
*3	CLARKSON, Richard Potts.....	M.A.	1907
	CLAYTON, Kenneth Graham.....	LL.B.	1920
	CLAYTON, Ruth Lily Gertrude.....	B.A.	1907
	CLERE, Frederick Temple.....	LL.B.	1914
2	CLINKARD, George William.....	M.Com.	1921
3	COAD, Nellie Euphemia.....	M.A.	1914
	COLLIE, Edward Norman.....	Mus.B.	1913
1J	COLLINS, Charles Bower.....	LL.B.	1906
2	COCKER, Alice.....	M.A.	1920
1	COMBS, Frank Livingstone.....	M.A.	1915
	COOK, Henry Lawrence.....	LL.B.	1912
	COOKE, Charles John.....	B.A.	1903
3	COOKE, Florence Winifred.....	M.A.	1911
	COOKE, Gertrude Florence.....	B.A.	1908
a	COOKE, Phillip Brunskill.....	LL.B.	1913
ba11	CORNISH, Henry Havelock.....	M.A.,	LL.B. 1916
	COOPER, Ellen Geraldine.....	B.A.	1923
a1J	COUSINS, Alan Murray.....	LL.M.	1922
	COUSINS, Eric Glanville.....	M.A.	1923
	COWLES, Jabez Alfred.....	B.A.	1901
1	COX, Edwin Thoms.....	M.A.	1915
	CRABBE, Lilian Laura.....	B.A.	1918
	CRAIG, George.....	LL.M.	1915
	CRAWFORD, Edith Jessie.....	B.A.	1917
	CRAWFORD, Elizabeth Chilman (née Wilson).....	B.A.	1904
	CROKER, Audrey Basil.....	LL.B.	1923
	CRUICKSHANK, David James.....	LL.B.	1924
2J	CUDDIE, James Robert.....	M.A.	1916
	CULLEN, Joseph John.....	B.A.	1917
	CULLINANE, Denis Chrispin.....	LL.B.	1924
	CUMBERWORTH, Ronald William.....	B.A.	1923
	CUMMING, Clyde Alexander.....	M.A.	1921
	CUNNINGHAM, Gordon Herriot.....	B.Sc.	1924
	CUNNINGHAM, Herbert Adam.....	LL.M.	1922
	CULLEN, Alfred James.....	B.Sc.	1921
3	CURRIE, Amy Elizabeth.....	M.A.	1909
	DALE, James Murray.....	LL.B.	1912
2J	DALE, Maud Mary (née Rigg).....	M.A.	1905, M.Sc. 1907
3	DALE, Margaret Frances.....	M.A.	1908
*G	DALL, George Bruce.....	B.Sc.	1918
	DALLASTON, Louisa Naomi.....	B.A.	1908
	DANIELL, Myra Deane.....	B.A.	1924
	DAVEY, George Henry.....	B.A.	1923
	DAVEY, Ivor.....	B.A.	1908
3	DAVIES, Edith Race.....	M.A.	1919
	DAWN, Margaret Ruth (née Keyworth).....	M.A.	1924
	DAY, Leslie Innes.....	B.Sc.	1921
	DE BERRY, Leonard Frederick.....	M.A.	1909
	DE LA MARE, Frederick Archibald.....	B.A. 1904, LL.B.	1912
3	DELAMORE, Adrian Wilmot.....	LL.M.	1914
*	DEMPSEY, Sidney William.....	B.A.	1913
	DEVLIN, Norah Anne.....	B.A.	1919
	DICKINSON, William Edward.....	B.A.	1923
	DICKSON, David McClelland.....	LL.B.	1923



	DIVE, Margaret Anne.....	B.A. 1902
a	DIXON, Lily Wallis.....	B.A. 1913
	DODD, John Henry.....	LL.B. 1921
a	DOUGLAS, Frederick Charles.....	B.A. 1903
	DOWNES, Winifred.....	B.A. 1924
a2	DUFF, Ethel Margaret.....	M.A. 1914
1J	DUGGAN, Eileen May.....	M.A. 1918
	DUNCAN, Ashley Trevor.....	LL.B. 1913
1J	DUNN, Jessie Simpson.....	M.A. 1919
	DWYER, Cecilia Mary.....	B.A. 1918
	EAST, Alfred Francis.....	B.A. 1924
3	EASTWOOD, Ada.....	M.A. 1907
a	EDWARDS, Eliza Rutland.....	B.A. 1913
	EDWARD, Ralph Wallace.....	B.A. 1924
b2	EICHELBAUM, Siegfried.....	M.A. 1908, LL.B. 1912
	ENTING, Edmund Laurenz.....	B.Com. 1924
	ERIKSON, Dagny Helen Edna.....	B.A. 1923
	ESPINER, Eileen Victoria.....	M.A. 1921
	ESPINER, Eric William Arnold.....	M.A. 1922
2b	ESPINER, Robert Henry.....	M.A. 1922
	EVANS, Edith Mary.....	B.A. 1905
1	EVANS, Eurfryn.....	M.A. 1923
ji2J	EVANS, Herbert Edgar.....	B.A. 1907, LL.M. 1911
	EVERETT, Gladys Gordon.....	M.A. 1916
	FAIR, Arthur.....	LL.B. 1907
	FALKNER, Lillian Elizabeth.....	B.A. 1919
	FATHERS, Harold Thomas Malcolm.....	B.A. 1920, B.Sc. 1924
	FEATONBY, Dorothy Helen.....	B.Com. 1924
*	FELL, Gerald Horton.....	LL.B. 1905
	FEIST, Frank Eric.....	B.Com. 1922
	FELTHAM, Edgar Charles.....	B.A. 1921
abG2	FENTON, Ethel Winifred Jessie.....	M.Sc. 1920
2J	FITT, Arthur Benjamin.....	M.A. 1909
3	FITZGERALD-EAGAR, Edward.....	M.A. 1915
*	FITZGIBBON, Edward Joshua.....	LL.B. 1907
	FODEN, Norman Arthur.....	B.A. 1916, LL.B. 1922
	FOGELBERG, Hilma Elvira.....	B.A. 1915
	FOGELBERG, Norman Emmeline.....	B.A. 1912
	FORTUNE, Reo Franklin.....	B.A. 1924
	FORSYTH, Helen Jean.....	B.A. 1920
3	FOSTER, William Henry Leader.....	M.A. 1909
	FOWLER, Etta Margaret.....	B.A. 1924
	FRAYNE, Lenora Jane.....	M.A. 1919
	FREE, Alan Walter.....	LL.B. 1924
	GAMBLE, Frank William.....	M.A. 1907
2	GARDNER, Rua Isabel.....	M.A. 1924
	GAVIN, Doris Margaret Hay.....	M.A. 1916
	GIBB, George Henry.....	B.A. 1914
	GIBBARD, David Edward.....	LL.M. 1923
3	GIBBS, Margaret Elizabeth.....	M.A. 1909
b3	GILBERT, Thomas Andrew.....	M.A. 1910
a3	GILL, Williamina Milne.....	M.A. 1916
	GILLANDERS, William.....	B.A. 1907
	GILLESPIE, Oliver Noel.....	LL.B. 1907
2	GILFEDDER, Michael.....	LL.M. 1913, M.A. 1920
	GILLON, Reginald Edward.....	LL.B. 1921
	GLASGOW, Maud Millicent (née Ellis).....	B.A. 1902
2	GLFNDINNING, Tom Aldrich.....	M.Sc. 1921
	GLOVER, Naida Melvyn.....	B.A. 1922
	GODFREY, Irene Isabel.....	B.A. 1921

	GOLD, Ailsa Lottie.....	B.A.	1919
	2 GONDRINGER, Bernard Joseph.....	M.A.	1914
1J	GOODALL, Stephen Inglis.....	LL.M.	1924
	GORDON, Jessie.....	B.A.	1907
2	GORDON, William Patterson Pollock.....	B.A. 1909, M.B., Ch.B.	1917
	GORDON, Norah Ambrosine.....	B.A.	1921
1	GOULD, William Horace.....	M.A.	1917
*3	GOULDING, John Hannington.....	B.A.	1906
	GRAHAM, Arnold John.....	B.A.	1915
3	GRAHAM, Charles Thomas.....	M.A.	1909
2	GRAHAM, Elsie Dorothy.....	M.A.	1912
	GRAHAM, John.....	B.A. 1901, LL.B.	1904
	GRANT, Frances Jane.....	B.A.	1907
	GREINER, Ronald Charles.....	LL.B.	1923
	GREVILLE, Reginald Henry.....	LL.B.	1920
	GREY, Phillip Oswald.....	LL.B.	1916
	GRIFFIN, John Leslie.....	B.Com.	1916
1h	GRIFFIN, Kenneth Massy.....	M.Sc.	1922
	GRIFFITHS, Herbert Llewellyn.....	LL.B.	1914
2	GRIGG, Felix John Theodore.....	M.Sc.	1923
2	GRIMMETT, Robert Edmund Richard.....	M.Sc.	1924
	GRUAR, Alice Laura Winter.....	M.A.	1916
3	HADDRELL, Olive Vyse.....	M.A.	1911
	HAIN, Charles Howard.....	LL.B.	1924
2	HALDANE, Alexander McCredie.....	LL.M.	1924
	HALDANE, Eugene William Robert.....	LL.B.	1924
	HALES, Mary Eveleen.....	B.A.	1905
*a	HALL, Ethel Margaret Baird.....	B.A.	1910
	HALL, James (B.A. a.c.).....	B.Sc.	1916
	HALL, Thomas Donald Horn.....	LL.B.	1922
*a3	HALL, Vincent John Baird.....	M.A.	1913
	HALLIWELL, Charlotte Lily Lang.....	B.A.	1922
a	HALL-JONES, Frederick George.....	B.A. 1912, LL.B.	1917
	HAMMOND, Gladys May.....	B.A.	1915
	HANNON, John William.....	LL.B.	1908
	HARDING, Emma.....	B.A.	1902
b	HARDING, Winifred Mary Elsie.....	B.A.	1921
	HARE, Janet Christian.....	B.A.	1916
	HARKER, Cyril Geoffrey Edmund.....	LL.B.	1915
	HARLE, Margaret Amy.....	B.A.	1920
2	HARWOOD, William Gladstone.....	M.Sc.	1923
	HASLAM, Charles Nelson.....	B.A.	1915
*2J	HASLETT, Jessie Olive (née Abernethy).....	M.A.	1907
	HAWKINS, Annie Harriet (née Tasker).....	M.A.	1906
	HEFNAN, Joseph William Allen.....	LL.B.	1917
	HEINE, Clara Mathilde.....	B.A.	1913
A11abJ	HEINE, Hilda Gertrude.....	M.A.	1923
bi2J	HEINE, Werner.....	M.A. 1915, LL.B.	1918
a	HEMERY, Lyndon Clement.....	LL.B.	1918
	HENDERSON, George Macdonald.....	M.A.	1913
	HENDERSON, Hubert.....	B.A.	1912
	HENDERSON, Kenneth Alan.....	LL.B.	1922
	HENDRY, Colin Alexander.....	LL.B.	1921
	HENRY, Eudora Violet.....	B.A.	1919
idba12	HERCUS, Eric Oswald.....	M.A.	1913
	HERON, Albert John George.....	M.A.	1923
2	HERON, Harold Alexander.....	M.A.	1924
	HERRICK, Miriam Margaret.....	B.A.	1924
3	HEWETSON, Kathleen Mary.....	M.A.	1909
	HEWLETT, Henry Charles.....	B.A.	1914
	HEWITT, Flo (née Scott).....	B.A.	1906



	HILL, Claude Channon.....	LL.B.	1922
	HILL, Reginald Bernard.....	LL.B.	1914
2	HIND, Edith Miriam.....	M.A.	1909
	HIND, Helen Mary.....	B.A.	1919
3	HIRD, William Edward.....	M.A.	1913
	HOGG, Eric Thomas Edward.....	LL.B.	1924
	HOGGARD, Dudley Reginald.....	LL.B.	1911
	HOLGERSON, George.....	B. Agric.	1923
	HOLMES, Elsie Mary.....	B.A.	1924
	HOPKIRK, Susanna Margaret.....	B.A.	1914
	HOUGHTON, Kathleen Mary Lawrence.....	B.A.	1913
2	HOULT, William Harold.....	M.A.	1908
	HOWIE, Richard Arthur.....	LL.B.	1918
*eba	HUDSON, Athol.....	B.Sc.	1916
	HUDSON, Edward Varley.....	B.A.	1921
	HUESTON, Dorothy Lilian.....	B.A.	1914
	HUNT, Dorice Cowles.....	B.A.	1915
	HUNT, Ellen Jane.....	B.A.	1913
a	HUNT, Olive Lilian.....	B.A.	1918
	HUNT, Winifred Mary.....	B.A.	1924
a3	HUNTINGTON, Harriet (née Jenkins).....	M.A.	1903
	HUTCHISON, James Douglas.....	LL.B.	1921
3	HUTTON, James.....	M.A.	1909, 1916
	HYLTON, Ina Gwendoline.....	B.A.	1909
	IMLAY, James George.....	LL.B.	1922
	INDER, Eric Wales.....	LL.B.	1917
	IRVINE-SMITH, Fanny Louise.....	M.A.	1921
3	ISAAC, Nora Gwendoline.....	M.A.	1912
	ISAAC, Hubert Preston.....	B.A.	1920
	JACKA, Ida Vera.....	B.A.	1922
	JACKSON, Albert.....	M.A. 1922, B.Sc.	1924
*	JACKSON, George Covell.....	B.A.	1912
	JACKSON, Patrick Montague.....	B.A.	1923
	JAMESON, Catherine.....	B.A.	1909
ba2J	JENKINS, Harriett Mary.....	M.A.	1912
ba1J	JENNESS, Diamond.....	M.A.	1908
	JEUNE, Geoffrey John.....	LL.B.	1923
ba1	JOHNSTON, Elsie Millicent.....	M.A.	1910
	JOHNSTONE, Alexander Howat.....	B.A. 1903, LL.B.	1905
	JOHNSTONE, Dora.....	B.A.	1920
2	JONES, Sydney Ionoval.....	M.A.	1922
1bJ	JOINER, William Alexander.....	M.Sc.	1923
	JOPLIN, Frank.....	B.A. 1916, B.Sc.	1923
a3	JORDAN, Thomas.....	M.A. 1902, LL.B.	1907
b	JOYCE, Mary Ellen.....	B.A.	1921
	JUNKER, Dorothy Fritzena Elise.....	B.A.	1917
1	KANE, Thomas.....	M.A.	1919
	KARSTEN, Rhona Permain.....	B.A.	1919
	KAY, Reginald Vincent.....	LL.B.	1920
	KEEBLE, Lily Kate Victoria.....	M.A.	1923
	KELLY, Francis Edward.....	LL.B.	1912
	KELLY, Francis Patrick.....	LL.B.	1910
	KELSEY, Brois.....	B.A.	1920
	KEMPTHORNE, Frederick Maurice.....	B.A.	1915
ba11J	KENNEDY, Robert.....	M.A. 1910, LL.M.	1911
2	KERR, Harold Walter.....	M.A.	1924
	KERR, John Robert.....	LL.B.	1923
2	KERR, Victor Edie.....	M.A.	1924
	KERSHAW, Frances Evaline.....	M.A.	1905



	KEYS, Lilian Gladys.....	B.A.	1920
2	KIBBLEWHITE, Bruce Melville.....	M.A.	1916
	KIDSON, Edward Winton.....	B.A.	1924
2	KIDSTON, Eleanor.....	M.A.	1919
	KING, Truby.....	LL.B.	1911
	KING, Geoffrey John.....	M.A.	1924
	KIRK, Alan Alexander.....	B.A.	1923
	KIRK, Charles Gordon.....	B.Sc.	1923
	KIRK, Ida May.....	B.A.	1924
	KITCHING, William David Poynton.....	LL.B.	1921
	KLIMECK, Martin Joseph.....	B.A.	1923
	KNELL, Norman Leonard.....	LL.B.	1923
1J	KNIGHT, Winifred Edith Georgina.....	M.A.	1919
	LAING, James Macfarlane.....	LL.B.	1923
G	LANCASTER, Thomas Leonard.....	B.Sc.	1915
bG	LANKSHEAR, Frederick Russell.....	B.A.	1907
	LATTER, Mary Juliet Brackenbury.....	B.A.	1921
1	LAW, Euphemia Ethel.....	M.A.	1910
	LAWRENCE, Gilbert Alexander.....	B.Sc.	1923
	LAWTON, Herbert Wesley.....	B.A.	1924
a	LEADBETTER, Malcolm.....	B.A.	1924
	LEECH, Eileen Dorothy.....	B.A.	1923
	LEES, Cecil Edward.....	LL.M.	1923
	LEHNDORF, Chloë Ruth.....	B.A.	1915
a	LENNARD, Cyril Guy.....	LL.B.	1915
	LENNON, Monica.....	B.A.	1920
a3	LEVI, Leila Esther.....	M.Sc.	1913
a	LEWIS, Florence Minnie.....	B.A.	1907
a	LITTLE, Norman Fenwick.....	B.A. 1916, LL.B.	1920
	LIVINGSTONE, Fanny Ruth.....	M.A.	1918
	LOCKWOOD, Amy.....	B.A.	1924
	LOFTUS, Mabel Una.....	B.A.	1919
	LOGAN, David Kennedy.....	LL.B.	1905
	LOW, Benjamin Harris.....	B.A. 1899, B.Sc.	1909
	LOW, Kenneth William.....	LL.B.	1922
	LUKE, Arthur James.....	LL.B.	1913
	LYNCH, Catherine.....	B.A.	1924
a3	LYNCH, Eva Myra Beryl.....	M.A.	1904
	LYNCH, Phillip Patrick.....	B.Sc.	1919
	LYNN, Delight Marianne.....	B.A.	1922
	LYNSKEY, James Henry.....	B.A.	1911
*a	LYON, Eric.....	LL.B.	1911
	LYON, William Alexander.....	B.A. 1908, LL.B.	1914
*	LYONS, Thomas.....	B.A.	1917
	McCARTHY, Ita.....	B.A.	1919
a1	McCARTNEY, Dorothy.....	M.A.	1919
*	McCARTNEY, Malcolm.....	LL.B.	1915
	McCLELLAND, Norman.....	M.Sc.	1924
*	McCONNELL, Robert William.....	LL.B.	1913
	McCORMICK, Horace.....	LL.B.	1923
G	McDOWALL, James Campbell.....	B.Sc.	1914
	McELDOWNEY, William Joseph.....	LL.B.	1919
	McHARDIE, Winifred Emmeline.....	B.A.	1912
b	McKENZIE, Frank Ezekiel.....	M.A., LL.M.	1921
1	McKENZIE, Mary Boyne.....	M.A.	1915
	McLEOD, David.....	M.A. (Glas.), B.Sc.	1915
	McMASTER, James.....	B.A.	1917
2	McNAUGHT, Gifford John.....	M.A.	1924
	McRAE, Janet Elspeth.....	B.A.	1924

*e1J	MACDOUGALL, Allan.....	M.A. 1908
	MACKAY, Athol Reay Ferguson.....	B.Com. 1924
3	MACKENZIE, Annie Catherine W. S.....	M.A. 1918
be	MACKENZIE, Hugo Alexander.....	B.A. 1917
2	MACKENZIE, Jean Hutton.....	M.A. 1921
j	MACKENZIE, Seaforth Simpson.....	LL.B. 1907
3	MACKERSEY, Lindsay John.....	LL.M. 1914
3	MACLEAN, Dorothy Bertha.....	M.A. 1919
	MADELEY, Ethel May.....	M.A. 1923
	MALFROY, Jules Omer John.....	LL.B. 1924
*	MARSDEN, Joseph Stanley.....	B.A. 1915
	MARSDEN, Vera.....	B.A. 1923
	MARTIN, Annie McWilliam.....	B.A. 1921
	MARTIN, Edith.....	B.A. 1919
2J	MARTIN, Ethel Emily Milford.....	M.A. 1906
	MARTIN, Frederick Millward.....	LL.B. 1906
	MARTIN, Frederick William.....	B.Sc. 1919, M.A. 1922
2	MARTIN, Gordon Utley.....	M.A. 1924
	MARTIN-SMITH, Percival.....	LL.B. 1922
1	MASKELL, Francis Gerard.....	M.Sc. 1924
a3	MASON, Henry Greathead Rex.....	M.A. 1907
	MATHER, Winifred Margaret.....	B.A. 1920
	MATTHEWS, Erica McGeachen.....	B.A. 1919
e	MELDRUM, Alexander Francis.....	LL.B. 1919
	MELLOR, Helen Mary.....	B.A. 1915
1	MILLARD, John Norman.....	M.Sc. 1923
b1Je	MILLER, Harold Gladstone.....	M.A. 1920
*	MILLS, John Edmund.....	B.A. 1913
2	MONAGHAN, Harold Wyatt.....	M.A. 1910
	MONCRIEFF, Agnes Meikle.....	M.A. 1921
	MOORE, Doris.....	B.A. 1922
	MOORE, Ellen May (née Hildreth).....	B.A. 1908
	MOORE, Henry Edgar.....	LL.B. 1924
a	MOORE, Muriel Atmore.....	B.A. 1919
	MOORE, Reginald.....	M.A. 1899, LL.B. 1901, B.Sc. 1924
	MORAN, Stanislaus James.....	LL.B. 1905
3	MORICE, George William.....	M.A. 1911
	MORISON, David Gordon Bruce.....	LL.B. 1922
k3	MORRISON, John Cruickshank.....	M.A. 1913, LL.B. 1914
	MOSS, Leyon Miall.....	B.A. 1914, LL.M. 1924
	MOTHESE, Frederick William.....	B.A. 1913
	MOURANT, Mabel Constance (née Seagar).....	B.A. 1905
	MOUSLEY, Edward Opotiki.....	LL.B. 1918
	MULHOLLAND, Sarah Louisa.....	B.A. 1924
	MUNRO, Murdock Might.....	B.A. 1924
ba1	MURPHY, Bernard Edward.....	M.A. 1909, LL.B., B.Com. 1916
	MURRAY, Mary Edith Elizabeth.....	B.A. 1915
	MUTTER, Nell Dorothy Annie.....	B.A. 1924
1	MYERS, John Golding.....	M.Sc. 1924
	MYERS, Margery.....	M.A. 1921
	NATHAN, Anthony Carrol.....	LL.B. 1914
a21	NEALE, Edward Percy.....	M.A., LL.B., M.Com. 1921
	NEILL, James Campbell.....	B.Sc. 1924
3	NEILSON, Florence.....	M.A. 1909
2	NEILSON, Isabel.....	M.A. 1910
	NEWTON, Ella Marjorie.....	B.A. 1924
a	NICHOLLS, Gerard Henry.....	B.A. 1911, LL.B. 1913
2	NICOL, John.....	M.A. 1922
	NIGHTINGALE, Henry John.....	M.A. 1915
2	NORMAN, Nora Phillippa.....	M.A. 1919
	NORTH, Esther Mary.....	B.A. 1915



	O'CONNELL, Leonard John.....	B.A.	1917
	O'CONNOR, Harold Arthur Wellesley.....	B.Sc.	1923
a	OGG, James.....	B.A.	1910
	O'LEARY, Humphrey Francis.....	LL.B.	1908
2	OLIVER, Selina Rosa.....	M.A.	1917
	ONGLEY, Esther Ellen.....	LL.B.	1919
ba22	ONGLEY, Montague.....	M.A., B.Sc.	1916
2G	ORAM, Matthew Henry.....	M.A. 1909, LL.B.	1912
	OSTLER, Henry Hubert.....	LL.B.	1905
Jb1	PAISLEY, Albert.....	M.A.	1921
	PALMER, Alice May.....	B.A.	1912
	PAPPS, Arthur James.....	B.A.	1910
	PARK, Piata Heni.....	B.A.	1910
	PARKINSON, Arnold Edward Henry.....	B.A.	1922
2	PATTERSON, James McGregor.....	M.A.	1924
	PATTERSON, William James Campbell.....	LL.B.	1919
	PATTERSON, Airini.....	B.A.	1922
a	PAUL, Eileen Mary.....	B.A.	1924
ba2	PAULSEN, Norman Matthias.....	M.A.	1914
	PEGLER, Leonard Francis.....	B.A.	1907
	PEMBERTON, Leila Emily Inez.....	B.A.	1912
a	PERYMAN, Henry Lipman Erle.....	B.A.	1924
	PERKS, Thomas Edgar.....	B.Sc.	1922
	PERRY, David.....	LL.B.	1921
	PERRY, William.....	LL.B.	1908
	PHILLIPS, Arthur James.....	B.Com.	1922
	PHILLIPS, Frederick Oliver Reuben.....	LL.B.	1911
a	PICKERING, Eva Mary.....	B.A.	1910
a1	PIGOTT, Elizabeth Mary.....	M.A.	1914
	PIGOTT, Ellen.....	M.A.	1915
	PIGOU, Agnes Myrtle.....	B.A.	1924
d2J	PILKINGTON, Lemoine James.....	M.A.	1916
	PINFOLD, Doris Carter.....	B.A.	1922
	PITKOWSKY, Minnie.....	B.A.	1922
	POOLE, Samuel Joseph.....	LL.B.	1917
TR	POPE, Eleanor Airini.....	M.Sc.	1922
3	POPE, John Carington.....	M.A.	1911
3	POPE, Elizabeth Stewart (née Morrison).....	M.A.	1909
	POPE, Russell Edward.....	LL.B.	1924
	POWELL, Albert Hugh.....	LL.B.	1911
3	POYNTER, Zoe Esther.....	M.A.	1906
2	PRICE, Cyril Joseph Rutherford.....	M.A.	1922
	PRIESTLEY, Dorothy Freda.....	M.A.	1922
	PRICHARD, Herbert Dugdale.....	B.A.	1922
	PRICHARD, Ivor George.....	LL.B.	1923
	PRINGLE, William Pil'iet.....	LL.B.	1923
	PROUSE, George Stanley.....	LL.B.	1910
	PURDIE, William Cattermole.....	B.Sc.	1921
	QUILLIAM, Ronald Henry.....	LL.B.	1914
a	RANDELL, William.....	LL.B.	1921
b2	RANSTON, Harry.....	M.A. 1914, Litt.D.	1923
GR2	READER, Vera Birdie.....	M.Sc.	1924
	REID, Constance Taiaroa (née Strack).....	B.A.	1908
	REID, George Walter.....	B.Com.	1910
	REID, John Stanhope.....	LL.B.	1924
	REILLY, Charles.....	B.A.	1910
GT1bJ	RICHARDSON, Henry Lorimer.....	M.Sc.	1924
	RICHARDSON, Henry Hay.....	B.A.	1913
	RICHMOND, Howard Parris.....	B.A. 1900, LL.B.	1903
aG	RIGG, Ernest Edward Andrew Thompson.....	B.Sc.	1905



d1J	RIGG, Theodore.....	M.Sc.	1911
	RISHWORTH, Eric Kendall.....	M.A.	1923
	RHODES, Kasi F. M.....	B.A.	1922
	ROBERTS, Florence Grace.....	B.A.	1906
	ROBERTSON, Charles.....	B.A.	1922
ba2G	ROBERTSON, George Harold.....	M.Sc.	1913
	ROBERTSON, Henrietta McCoig.....	M.A.	1922
a3	ROBERTSON, Isabel.....	M.A.	1905
eba1GJ	ROBERTSON, Phillip Wilfred.....	M.A. 1905, M.Sc.	1906
ba	ROBINSON, Alfred Herbert.....	M.A.	1915
3	ROBSON, Harry.....	M.A.	1914
3	ROCKEL, Clara Constance Herberg.....	M.A.	1910
	ROGERS, Charles Henry.....	LL.B.	1923
	ROGERS, George Percival.....	LL.B.	1906
	ROGERS, Lancelot Anthony.....	LL.B.	1917
b	ROGERS, Maurice Newton.....	B.Sc.	1922
a2	ROSE, George Gauld.....	M.A. 1903, LL.B.	1916
	ROSE, Mary (née Greenfield).....	B.A.	1901
	ROSS, Christina McKay.....	B.A.	1905
	ROSS, Fanny Lethbridge.....	M.A.	1917
	ROSS, Hilda.....	B.A.	1916
1J	ROSS, John Wallace.....	M.A.	1909
3	ROSS, Kenneth.....	M.A.	1915
3G	ROSS, Margaret Cleland.....	M.A.	1902
	ROUGHTON, Myra Winifred.....	B.A.	1921
	ROUT, William Vernon.....	LL.B.	1908
2	ROWE, Arthur Leslie.....	M.A.	1924
	ROWNTREE, Ernest Henry Waltham.....	B.Sc.	1919
	ROY, Ian William Barton.....	LL.B.	1922
	ROY, Rubina Augusta.....	M.A.	1921
	RUDMAN, Robert Edgar.....	M.A. 1905, B.Sc.	1910
	RUSCOE, Ellen Victorine.....	B.A.	1923
	RUSSELL, James.....	B.A.	1911
	RUTHERFURD, Elliot Stanley.....	LL.B.	1911
	RUTHERFURD, James Willoughby.....	LL.B.	1913
2	RYDER, Robert Browne.....	M.A.	1918
1	RYAN, Bernard James.....	M.A.	1920
1J	SALMON, Olive Rita.....	M.A.	1919
2	SAMPSON, Eileen Norah.....	M.A.	1917
	SAMUEL, Gurdon.....	LL.B.	1907
b	SAUNDERS, Gordon Frederick.....	M.A.	1920
b	SAUNDERS, Gordon Frederick.....	B.A.	1919
a2	SAXON, Gwendoline Minnie von Tunzelman.....	M.A.	1912
	SCANTLEBURY, Percival John.....	LL.B.	1908
	SCARROW, Gertrude Victoria.....	B.A.	1922
	SCOTT, Beatrix Mary (née Nicholson).....	B.A.	1908
	SCOTT, Jessie.....	B.A.	1912
2	SCOTT, John Alexander.....	LL.M.	1916
	SCOTT, Richard Robert.....	LL.B.	1924
	SEDDON, George Hume.....	LL.B.	1923
	SEDDON, Thomas Edward Youd.....	LL.B.	1915
	SEGGRIEF, Thomas Bernard.....	B.A.	1922
	SEWELL, Eleanor Alicia.....	B.A.	1920
	SHEAT, Joseph Henry.....	LL.B.	1919
	SHEAT, Ruth Violet.....	B.A.	1924
	SHEAT, William Alfred.....	B.A. 1920, LL.B.	1923
b2J	SHIELDS, Constance Hindmarsh.....	M.A.	1918
	SHORLAND, Jessie Edith.....	B.A.	1922
	SHORT, Arthur Wilbert.....	B.A.	1909
	SHORT, John Lawrence.....	LL.B.	1911
	SIEVWRIGHT, Archibald Burnett.....	LL.B.	1915
	SIEVWRIGHT, Irene Jessie McCallum.....	B.Sc.	1923

	SIEVWRIGHT, Mary Helen.....	B.A.	1916
	SIM, Wilfred Joseph.....	LL.B.	1913
3	SIMPSON, Thomas Folkman.....	LL.M.	1922
2	SLADE, William Gardner.....	M.A.	1916
	SLOCOMBE, Charles Spencer.....	B.Sc.	1919
2	SLOWEY, Anastasia Imelda.....	M.A.	1907
	SMITH, David Stanley.....	LL.M.	1913
	SMITH, Eva Hyacinth.....	B.A.	1919
	SMITH, Fanny Louisa.....	B.A.	1908
G	SMITH, John Charles.....	B.Sc.	1920
	SMYTH, Annie Isa.....	B.A.	1905
a	SMYTH, Areita Isabel.....	LL.B.	1921
2	SNELL, Joseph.....	M.A. 1911, LL.B.	1922
b1J	SPROTT, Maurice William Campbell.....	M.A.	1906
b2	SPROTT, Stuart Tichborne Campbell.....	M.A.	1911
	SPURDLE, Winifred Anice.....	B.A.	1922
	STEVENS, William Hutton.....	B.A.	1920
1J	STEWART, James Francis.....	LL.M.	1924
	STITT, Isabelle Allsworth.....	B.A.	1914
	STOUT, John Logan.....	LL.B.	1905
3	STRACK, George Sainsbury.....	M.A.	1915
3	STUCKEY, Frederick George Albert.....	M.A.	1909
	SUTCLIFFE, Joseph Richard.....	B.Sc.	1923
Jb1A	SUTHERLAND, Ivan Lorin George.....	M.A.	1920
2	SUTHERLAND, Olive Rose.....	M.A.	1917
	SUTTON, Howard Harry.....	B.A.	1913
	SWAN, George Henry Allison.....	LL.B.	1924
ab	SYME, Ronald.....	B.A.	1924
	TAIT, Annie Frances.....	B.A.	1913
3	TAMBLYN, Joseph.....	M.A.	1903
	TANKERSLEY, Norman Stephen.....	B.Agr.	1922
	TAVERNER, Douglas Lacy.....	LL.B.	1923
2G	TAYLOR, Clara Millicent.....	M.A.	1907
2	TAYLOR, Cuthbert Hargreaves.....	M.A. 1910, LL.B.	1914
	TAYLOR, Lyra Veronica Esmeralda.....	LL.B.	1918
	TENNANT, Ida Frances.....	B.A.	1908
a1	TERRY, Mary Catherine.....	M.Sc.	1916
a2	TEYCHENNE, Annie Winifred.....	M.A.	1912
	THOMAS, William Webster.....	B.A.	1911
*	THOMPSON, Alister McLean.....	LL.B.	1915
	THOMPSON, Andrew James.....	LL.B.	1916
1ba2JG	THOMPSON, Roland Dale.....	M.A. 1917, B.Sc.	1920
	THOMPSON, Malcolm.....	LL.B.	1924
	THOMPSON, Frank David.....	B.A.	1901
	THOMPSON, Frederick Grenville.....	B.A.	1924
	THOMPSON, Henry James.....	B.Com.	1924
	THORNTON, Frederick Edmund Ernest.....	M.A.	1924
	THWAITES, John Edward.....	M.A.	1916
	TILLER, Leslie Walter.....	B.Sc.	1922
	TILLY, Harry Smith.....	B.Sc.	1916
	TOCKER, Albert Hamilton.....	M.A.	1917
	TOCKER, Francis Alfred.....	B.A.	1917
ba2J	TOLLEY, Jessie.....	M.A.	1914
	TONSFORD, Alice Winifred (née Griffiths).....	B.A.	1906
	TOOGOOD, George.....	LL.B.	1906
a	TOOMAN, Elizabeth.....	B.A.	1903
	TRACY, Leslie Alexander.....	LL.B.	1923
	TRAPP, Frances Melanie (née Wolters).....	B.A.	1905
a2J	TROUP, Gordon Sloan.....	M.A.	1922
	TSCHEREMISSINOFF, Catherine.....	B.A.	1923
	TUDHOPE, James McCurdy.....	LL.B.	1917
	TURNBULL, Frank Kingdon.....	LL.B.	1910
	TUSTIN, Ernest Belton.....	LL.B.	1915



	URQUHART, George.....	LL.B.	1904
*	VAN STAVEREN, Henry.....	LL.B.	1910
	VERNON, John Douglas.....	LL.B.	1910
	VERSCHAFFELT, Paul.....	LL.B.	1919
1	VICKERMAN, Hugh.....	M.Sc.	1911
2	VINE, Harriette Joanna.....	LL.M.	1915
	WADDINGTON, Edythe Grace.....	B.A.	1918
1	WAGHORN, Reginald James.....	M.A.	1924
	WALDEGRAVE, William Ernest.....	LL.B.	1913
	WALLACE, Carrie Pierpont.....	M.A.	1913
	WALLACE, Ivan Stewart.....	LL.B.	1924
	WALLACE, Elma Wilhelmina Ida.....	M.A.	1924
3	WATSON, Gordon Graham Gibbs.....	M.A. 1914, LL.B.	1914
3	WATSON, Isabel Evelyn Spencer.....	M.A.	1907
	WATSON, Robert Mackenzie.....	LL.B.	1907
2	WATSON, Ronald Sinclair.....	M.A.	1912
	WEBB, Irene Gwendolyn.....	B.A.	1917
	WEBBER, Stanley William.....	B.Com.	1924
	WEITZEL, Hedwig.....	B.A.	1921
b2	WEST, Francis Leveson-Gower.....	LL.M.	1914
	WESTON, Ivan Wingate.....	B.Sc.	1924
	WHITLAW, Alan Campbell.....	LL.B.	1920
	WHITELAW, Enid Jessie K.....	B.A.	1918
	WHITEHORN, Marion Berners.....	B.A.	1923
2	WHITEHOUSE, Thomas Keith Raymond.....	M.Sc.	1921
	WHITEMAN, Neville George.....	B.A.	1922
	WHITMORE, Elizabeth Freda (née Wedde).....	B.A.	1904
	WILD, Cyril Thomas.....	M.A.	1914
	WILD, Geoffrey Victor.....	B.A.	1924
	WILLIAMS, Ailé (née Woodham).....	B.A.	1908
1b	WILLIAMS, David Owen.....	M.A.	1924
	WILLIAMS, Ethel.....	B.A.	1904
	WILLIAMS, Florence Bertha.....	Mus.B.	1906
3	WILLIAMS, Henry.....	LL.M.	1915
	WILLIAMSON, Grace Annie.....	B.A.	1913
	WILLIAMSON, John.....	B.A.	1905
	WILLIS, Lawrence William.....	LL.B.	1924
	WILLIS, Vernon Ballance.....	LL.B.	1913
2	WILSON, Ella Catherine.....	M.A.	1923
2	WILSON, Francis Prendeville.....	M.A.	1905
	WILSON, Frank Alexander.....	B.A. 1911, LL.B.	1913
	WILSON, Joyce Hamerton.....	B.Sc.	1921
b2	WILSON, Marion Kitty.....	M.A.	1903
	WILSON, Melvyn Lily.....	B.A.	1924
1	WILSON, William Hendry.....	B.A. 1905, LL.M.	1909
	WIREN, Edgar Charles.....	LL.B.	1924
CJ	WIREN, Sydney Archibald.....	B.A., LL.B.	1919
b2J	WOLTER, Frederic Francis.....	M.A. 1914, Litt.D.	1924
	WOOD, Douglas Reginald.....	B.A. 1924, LL.B.	1924
b	WOOD, George Ernest Francis.....	B.A.	1921
nb3	WOODHOUSE, Iris Helena.....	M.A.	1919
	WOODWARD, Keith Alexander.....	LL.B.	1924
3	WOODWARD, Matthew Francis.....	M.A.	1919
	WOODS, Edith Minnie.....	B.A.	1919
	WRIGHT, Alexander McKay.....	M.Sc.	1923
	WRIGHT, Eric George.....	LL.B.	1913
T	WYLLIE, Irene Kathleen.....	B.A.	1918
2	YATES, Otho Henry Edward.....	M.A.	1923
1J	YEATES, John Stuart.....	M.Sc.	1923
	ZIMAN, Rae Lena.....	B.A.	1915



## THE VICTORIA COLLEGE ACT, 1905.

[As amended by the Education Act Amendment Act, 1907, the Queen's Scholarship Act, 1906, the Victoria College Act Amendment Act, 1914, and the Victoria College Amendment Act, 1923.]

An Act to consolidate certain Enactments of the General Assembly relating to Victoria College.

[27th October, 1905.]

Be it enacted by the General Assembly of New Zealand in Parliament assembled, and by the authority of the same, as follows:—

1. The short Title of this Act is "The Victoria College Act, 1905."

### THE COLLEGE.

2. There is hereby established in the City of Wellington a college connected with the New Zealand University, to be called "the Victoria College."

### THE CORPORATION.

3. The Council of the College, its professors and lecturers, and the graduates and undergraduates of the New Zealand University, whose names are on the books, are hereby constituted a body politic and corporate under the style of "the Victoria University College," by which style that corporation shall have perpetual succession and a common seal.

### THE COUNCIL.

4. The corporation shall act by a governing body, to be called "the Victoria University College Council" (elsewhere throughout this Act referred to as "the Council.")

5. The Council shall be constituted as follows:—

- (a) A group of two members appointed by the Governor:

- (b) A group of two members appointed by the Professorial Board of the College:
- (c) A group of four members elected by the District Court of Convocation of the Victoria University District as defined by the New Zealand University Act, 1908:
- (d) One member appointed by the Wellington City Council:
- (e) A group of two members elected by the members of the Education Boards of education districts wholly or partly within the Victoria University District:
- (f) One member elected by the governing bodies of the secondary schools as defined by section eighty-nine of the Education Act, 1908, in the Victoria University District:
- (g) A group of two members elected by the teachers in public schools in the Victoria University District holding certificates of competency under section fifty-four of the Education Act, 1908:
- (h) One member elected by those teachers in secondary schools and in day technical schools, as defined respectively by section eighty-nine of the Education Act, 1908, and by section sixteen of the Education Amendment Act, 1910, in the Victoria University District who are graduates of any British chartered University, or are holders of certificates of competency under section fifty-four of the Education Act, 1908.

6. (1) Members appointed pursuant to paragraphs (b) and (d) of section five hereof shall be appointed by resolution passed at a meeting of the Board or Council making the appointment.



(2) Members elected pursuant to paragraphs (c), (e), (f), (g), and (h) of the same section shall be elected in manner hereinafter appearing.

(3) The first appointments and elections of members pursuant to the said section five shall be made within the first seven days of the month of June, nineteen hundred and fifteen, or as soon thereafter as may be convenient, and the members so appointed or elected shall come into office on the first day of July, nineteen hundred and fifteen:

Provided that no appointment or election shall be made under the provisions of paragraphs (a), (e), or (g) of the said section, save for the purpose of filling casual vacancies, until the month of June, nineteen hundred and seventeen.

7. (1) For the purpose of election of members pursuant to paragraphs (c), (e), (g), and (h) of section five hereof the following provisions shall apply:—

- (a) The Registrar of Victoria University College, or such other person as the Council appoints, shall be the Returning Officer who shall conduct all elections of those members.
- (b) The Returning Officer shall prepare separate rolls of the persons who are entitled to vote for a member or members pursuant to the said paragraphs (c), (e), (g), and (h), and shall enter in the respective rolls the name, occupation, and address of every person who possesses the necessary qualifications entitling him to vote; provided that no person shall be entered on more rolls than one.



- (c) Any person who possesses more qualifications than one shall be entitled to have his name transferred from one roll to another roll on which he is qualified to be enrolled at any time before the closing of the rolls as hereinafter mentioned:

Provided that a person who has had his name so transferred from one roll to another roll shall not be entitled to have his name transferred from the last-mentioned roll until after two years have elapsed since the date of the transfer to that roll, unless he has ceased to be qualified to have his name thereon.

- (d) All rolls shall be closed at five o'clock in the afternoon of the fourteenth day immediately preceding the day on which an election is to be held and shall continue to be closed until the election is completed; and no name shall be entered on any roll while that roll is closed.
- (e) Claims for enrolment shall be made and disposed of in accordance with regulations made by the Council.
- (f) At every election the votes shall be given by sealed voting-papers, in the form prescribed by regulations made by the Council, delivered to the Returning Officer personally on or before the day fixed for the election, or forwarded to him by post or otherwise so as to reach him not later than that day.

(2) For the purpose of the election of a member pursuant to paragraph (f) of section five hereof the following provisions shall apply:—

- (a) The governing body of each secondary school shall be entitled to one vote for every hundred or part of a hundred pupils (exclusive of the pupils in any lower department) in average attendance for the year ending on the thirty-first day of December immediately preceding the election.
- (b) The votes of each such governing body shall be by resolution passed at a meeting of that governing body.

(3) In any election to which this section refers the majority of votes shall decide the election, provided that if two candidates have an equal number of votes the Registrar shall (if necessary) determine the election by lot in the presence of the Chairman or other member of the Council.

8. (1) No member of the Professorial Board shall be a member of the Council unless he is appointed a member of that Board pursuant to paragraph (b) of section five hereof.

(2) A member of the Professorial Board so elected shall not be entitled to vote on any question before the Council affecting himself or directly affecting the salary of any member of the teaching staff of the College, or directly affecting any payment made by or due from the Council to any member of the teaching staff.

9. Subject to the provisions of the next succeeding section, the term of office of all members appointed or elected as provided by paragraphs (a), (b), (c), (e), and (g), of section five hereof shall be four years, and of all other members shall be two years; but all members shall continue to hold office until the appointment or election of their successors.



10. On the first day of July, nineteen hundred and fifteen, of the members appointed under the provisions of the principal Act by the Governor in Council, the one who has been longest in office shall retire, and the other two members so appointed shall be deemed to have been appointed by the Governor under this Act; in like manner, of the members elected under the principal Act by the graduates of the New Zealand University on the books of the College, the one who has been longest in office shall retire, and the other two members shall be deemed to have been elected in accordance with paragraph (c) of section five of this Act; in like manner, of the members elected under paragraph (d) of sub-section one of section five of the principal Act, the one who has been longest in office shall retire, and the other two members shall be deemed to have been elected in accordance with paragraph (g) of section five of this Act; and, in like manner, of the members elected under the provisions of the principal Act by Education Boards, the one who has been longest in office shall retire, and the other two members shall be deemed to have been elected in accordance with paragraph (e) of section five of this Act; and the member elected by the Professorial Board shall retire.

11. (1) Except as provided in the last preceding section, the members of the Council who are in office on the first day of July, nineteen hundred and fifteen, shall continue to hold office, subject as hereinafter in this section mentioned.

(2) On the first day of July, nineteen hundred and seventeen, and on the same day in each second year thereafter, one-half of the members mentioned in paragraphs (a), (b), (c), (e) and (g) of section five hereof and the members mentioned in paragraphs (d), (f), and (h), of the said section shall retire from office.



(3) The members to retire from each of the groups mentioned in paragraphs (a), (c), (e), and (g) of section five hereof on the first day of July, nineteen hundred and seventeen, shall be those who have been longest in office.

(4) The member to retire from the group mentioned in paragraph (b) of the said section five on the first day of July, nineteen hundred and seventeen, shall, on or before the first day of May in that year, be decided by lot amongst the members of that group.

(5) Of the members elected under paragraph (b) of section five of the principal Act, the one who has been longest in office shall retire on the first day of July, nineteen hundred and fifteen; and the remaining members shall retire on the first day of July, nineteen hundred and seventeen; and in no case shall any election be made hereafter of members under the said paragraph.

12. (1) If any member of the Council—

- (a) Dies, or by writing addressed to the Council resigns his seat; or
- (b) Becomes a bankrupt; or
- (c) For a period of three consecutive months fails to attend any meeting of the Council without obtaining leave of absence; or
- (d) Is absent from New Zealand for a period of six consecutive months without obtaining leave of absence,—

he shall cease to be a member, and the vacancy thereby created shall be deemed a casual vacancy.

(2) The member filling a casual vacancy shall hold office only for the residue of the term of the vacating member.

13. (1) Whenever a vacancy, whether casual or otherwise, occurs that is to be filled by appointment by the Governor it shall be the duty of the Council to forthwith report the fact to the Minister of Education.

(2) Whenever a vacancy, whether casual or otherwise, occurs that is to be filled by appointment by the Professorial Board, or by the Education Board, or by the Wellington City Council, it shall be the duty of the Council forthwith to report the fact to the Board or Council which appointed the vacating member.

(3) Whenever a vacancy, whether casual or otherwise, occurs that is to be filled by election it shall be the duty of the Council to do all things necessary for the proper conduct of that election.

(4) Each vacancy, whether casual or otherwise, shall be filled by the same authority as that which appointed or elected the vacating member.

13a. [*Section 12 of the Act of 1914.*] (1) The appointment or election of a member to fill a vacancy caused by the expiry of the term of office of a vacating member shall be made within the first seven days of the month of June next preceding such expiry, or as soon thereafter as may be convenient, but shall not take effect until such expiry.

(2) The appointment or election of a member to fill a casual vacancy shall be made not later than thirty days after the vacancy occurs.

(3) Every retiring member shall be eligible for reappointment or re-election.

(4) If any vacancy is not filled within sixty days after the same occurs, the Governor shall forthwith fill the vacancy by appointing some fit person as a member in place of the vacating member.



14. The Council shall meet at least once a month at such time and place as the Council determines.

15. At its first meeting held in the month of July in each year the Council shall elect one of its members to be Chairman.

16. The Chairman shall hold office for one year and shall be eligible for re-election.

17. Special meetings may be called at any time by the Chairman or any two members, five days' previous notice of the place and time for such meeting being posted or telegraphed to all the members.

18. At all meetings of the Council—

- (a) The quorum shall be six;
- (b) All questions shall be decided by a majority of the votes of the members present and voting;
- (c) The Chairman shall preside and have a deliberate vote, and, in the event of equality of voting, a casting vote;
- (d) In the absence of the Chairman from any meeting the members present shall elect one of their number to act as chairman at that meeting, and while so acting he shall have all the powers of the Chairman.

19. Subject to the provisions of this Act, the Council may from time to time make by-laws for the purpose of regulating its own procedure, the conduct of all elections under this Act, and the general administration of the affairs of the College:

Provided that such by-laws shall not come into operation until and unless they have been approved by the Governor-in-Council.



20. The Council may continue to act notwithstanding any vacancy in its body.

21. The Council shall cause exact minutes of all its proceedings to be kept and also full and accurate accounts of all its receipts, disbursements, liabilities and engagements.

22. The seal of the Council shall be in the custody of the Chairman, and shall not be affixed to any document except pursuant to a resolution of the Council.

23 (1) The Council shall have full power to appoint and remove all professors, lecturers, examiners, officers, and servants of the College, and to generally manage the affairs thereof:

(2) All persons appointed by the Council and holding office on the commencement of this Act shall be deemed to have been appointed under this Act.

#### THE PROFESSORIAL BOARD.

24. There shall be a Professorial Board of the College, consisting of all the professors of the College for the time being, and of such lecturers of the College for the time being as the Council may from time to time declare to be members of the Board.

25. The Board shall have power to make rules as to the time and place of its meetings and the procedure thereat:

Provided that all such rules shall, before coming into operation, be submitted to and approved by the Council.

26. At its annual meeting the Board shall elect one of its members, being a professor, to be Chairman, and if it fails so to do the Council may appoint a professor to be Chairman for the year.

27. The Chairman shall hold office for one year and be eligible for re-election.

28. At all meetings of the Board—

- (a) A quorum shall be such number as the Board with the consent of the Council from time to time determines.
- (b) The Chairman shall preside, and shall cause exact minutes of the proceedings to be kept.
- (c) He shall have a deliberate vote, and, in the case of equality of voting, a casting-vote:
- (d) In his absence from any meeting the members present shall elect another professor to act as chairman of that meeting, and while so acting he shall have all the powers of the Chairman.

29. Subject in each instance to the approval of the Council, and to such modifications as the Council thinks fit to make therein, the Board may—

- (a) Fix the course of study, and the days and hours of lectures:
- (b) Make rules as to the attendance of the students.
- (c) Prescribe the subjects for examinations for scholarships, exhibitions, prizes, and other college distinctions and awards.

30. Subject to the right of appeal to the Council (whose decision shall be final) by any person who feels aggrieved, the Board may—

- (a) Deal with all questions relating to the discipline of the students:
- (b) Manage the College library:
- (c) Give instructions to the College servants as to the performance of their duties.



31. The Board shall be subject to the control of the Council, and shall furnish to it such reports and information as from time to time the Council requests or the Board deems necessary.

32. The Board may from time to time offer such suggestions for the consideration of the Council as the Board thinks advisable in the interests of the College.

#### LECTURE FEES.

33. There shall be payable by the students such reasonable fees for general tuition and for attendance on lectures as from time to time the Council prescribes.

34. For the purpose of procuring such approval, the Council shall forward each table of fees to the Minister of Education for submission to the Governor-in-Council; and the fees shall not be chargeable until such approval is signified.

(Clauses 35 and 36 repealed by the Education Act Amendment Act, 1907.)

#### APPROPRIATION AND ENDOWMENT.

37. For the purpose of providing a fund for the maintenance of the College, and the payment of all expenses incurred by the Council in administering the affairs thereof, the Colonial Treasurer, without further appropriation than this Act, shall, out of the Consolidated Fund, pay to the Council each year ending the thirty-first day of March the sum of four thousand pounds, in such instalments during the year as he thinks fit.\*

38. The parcel of land described in the First Schedule hereto is hereby set apart as an endowment for the College, but shall remain vested in His Majesty.

\*The total income of the College from the Government before the cuts made in the grant on January 1st, 1922 and July 1st, 1922, was £11,500 exclusive of the National Endowment Grant.



39. The said parcel of land shall be held and administered as Crown lands under such of the leasing provisions of "The Land Act, 1892," as the Minister of Lands from time to time thinks fit; and the net rents and other proceeds derived therefrom and remaining after payment thereout of all necessary expenses attendant on the management and administration of the said land (including the expenses of survey and roading) shall, without further authority or appropriation than this Act, be paid over from time to time to the Council for the purposes of the College.

40. The parcel of land described in the Second Schedule hereto is hereby declared to be vested in the Council in trust as a site for University College buildings and as grounds appertaining thereto:

Provided that the said land shall be inalienable by sale, mortgage, lease, or otherwise.

41. The Council may grant leases of any land (other than the land described in the First and Second Schedules hereto) to which the corporation of the College at any time becomes entitled by way of purchase, grant, or otherwise, but may not without the previous consent of the Governor-in-Council sell or mortgage the same.

#### ACCOUNTS AND AUDIT.

42. The Audit Office shall be the auditor of the Council, and shall have the same duties and powers in respect of the moneys and accounts of the Council, and of persons dealing therewith, as if the Council were a local authority within the meaning of section six of "The Public Revenues Act, 1892."

43. Within ten days after the close of each financial year ending the thirty-first day of December,

the Council shall cause to be prepared and submitted to the Audit Office a statement of accounts showing—

- (a) The total receipts and disbursements for the year; and
- (b) Such other particulars as the Governor-in-Council from time to time prescribes by regulations under this Act.

44. Such statement shall be audited by the Audit Office within ten days after receipt thereof, and shall, together with the certificate of the Audit Office and a general report as to the progress of the College, be forwarded by the Council to the Minister of Education within thirty days after the close of such year, to be by him laid before Parliament if sitting, or, if not, then within ten days after the commencement of the next session thereof.

#### GENERAL.

45. The Minister of Education shall be the Visitor of the College, and shall have all the powers and functions usually possessed by Visitors.

46. The Governor may from time to time, by Order-in-Council gazetted, make such regulations as he deems necessary in order to give full effect to the provisions of this Act relating to Queen's Scholarships.

47. The enactments mentioned in the Third Schedule hereto are hereby repealed.

#### SCHEDULES.

##### FIRST SCHEDULE.

All that piece or parcel of land situated in Blocks I. and V., Nukumarū Survey District, in the Wellington Provincial District, containing by



admeasurement 4,000 acres, more or less: bounded towards the north by Blocks XIII., Momohaki Survey District, 14,500 links; towards the east by other part of Block I., Nukumaru Survey District, and by the Waitotara River, 38,600 links; towards the south-east by a Native reserve, 11,910 links; towards the south-west by a line, 3,500 links; and towards the west by Sections Nos. 13 and 11 in Block IX., and by Block IV., Wairoa Survey District, 33,073 links; be all the aforesaid linkages more or less: excepting therefrom the several roads which are included within the said area: as the same is delineated upon the plan deposited in the District Survey Office, Wellington.

## SECOND SCHEDULE.

All that parcel of land in the City of Wellington, containing by admeasurement 5 acres 3 roods, more or less, being part of the Town Belt: bounded towards the east generally by Salamanca Road from Kelburne Parade to the northernmost corner of Hospital Reserve; thence by the said Hospital Reserve to a public road, 50 links wide, forming the northern boundary of the Roman Catholic Cemetery; thence by the said public road, 75 links; thence by a right line bearing south  $22^{\circ} 59'$  west, 460 links; thence towards the south generally by a right line bearing south  $81^{\circ} 40'$  west, 440 links, thence by a right line to the eastern side of Kelburne Parade; and thence towards the west by the said Kelburne Parade to Salamanca Road aforesaid.

Also all that parcel of land in the City of Wellington, containing by admeasurement 2 roods 23 perches, more or less, being Allotments Nos. 1, 2 and 3 shown on Plan No. 898 deposited in the Lands Registry Office at Wellington, and known as Hospital Reserve: bounded towards the north-east by Salamanca Road and Plantation Reserve; to-



wards the south-east by a public road 50 links wide; and towards the south-west and north-west by the Town Belt.

## THIRD SCHEDULE.

## Enactments Repealed.

- 1897, No. 27.—“The Victoria College Act, 1897.”
- 1901, No. 70.—“The Victoria College Site and Wellington College and Girls’ High School and Wellington Hospital Trustees Empowering Act, 1901”: Except section 6.
- 1902, No. 44.—“The Victoria College Site Act, 1902.”
- 1903, No. 29.—“The Queen’s Scholarships Act, 1903.”

## W.E.A.—VICTORIA UNIVERSITY COLLEGE DISTRICT.

**University Tutorial Classes.**

*Chairman of the Tutorial Classes Committee*—Professor  
D. M. Y. Sommerville.

*Director of Tutorial Classes*—Professor T. A. Hunter.

*Tutor-Organisers*—

Wanganui-Manawatu—Mr. A. Ernest Mander.  
Taranaki—Mr. W. A. Sheat, B.A., LL.B.

*Tutors*—

Professor B. E. Murphy.  
Dr. I. L. G. Sutherland.  
Miss M. England.  
Mr. C. W. Kerry.  
Dr. M. H. Watt.

See also p. 29.

## COLLEGE CLUBS AND SOCIETIES.

### STUDENTS ASSOCIATION:

*Patron*—Professor E. J. Boyd-Wilson.

*President*—H. McCormick.

*Secretary*—I. L. Hjorring.

*Treasurers*—F. H. Paul and Miss M. Mackenzie.

*Editor of "The Spike"*—J. C. Beaglehole.

*Financial Secretary to "The Spike"*—R. F. Fortune.

"The Spike" is published in June and October, and any student with a literary bent may send in contributions of prose or verse. Terse comment of interest is welcomed.

### DEBATING SOCIETY:

*President*—H. G. Miller.

*Secretary*—H. A. Heron.

Debates are held in the Gymnasium building on alternate Saturday evenings, commencing at a quarter to eight.

### STUDENT CHRISTIAN UNION:

*President*—W. P. Rollings.

*Secretary*—O. D. Bell.

### EUROPEAN STUDENT RELIEF COMMITTEE:

*Chairman*—Professor J. S. Tennant.

*Secretary*—R. M. Campbell.

### FREE DISCUSSIONS CLUB:

*Chairman*—Professor T. A. Hunter.

*Secretary-Treasurer*—R. F. Fortune.

Meetings are held in the Gymnasium every other Thursday, at 8 p.m., and take the form of a short opening of the subject followed by free and informal discussion.

### BOXING CLUB:

*Chairman*—R. R. T. Young.

*Secretary*—C. E. Ball.

This Club holds weekly practices in the Gymnasium on Wednesday night from 7.30 to 9.30.

### ATHLETIC CLUB:

*Club Captain*—H. McCormick.

*Secretary*—F. S. Hill.



**WOMEN'S BASKET BALL CLUB:**

*Captain*—Miss R. Gardner.

*Secretary*—Miss W. Downes.

Once a week from 8 to 9 p.m. practices are conducted in the College Gymnasium; also some arrangement for outdoor practices in Kelburn Park is to be made this year.

**V.U.C. RIFLE CLUB:**

*President*—W. J. H. Haase.

*Secretary and Treasurer*—J. B. Yaldwyn.

**TRAMPING CLUB:**

*President*—Professor E. J. Boyd-Wilson.

*Secretary*—W. Jolliffe.

**DRAMATIC CLUB:**

*President*—Professor Mackenzie.

*Chairman*—J. B. Yaldwyn.

*Secretary*—F. A. Marriott.

**MATHEMATICAL AND PHYSICAL SOCIETY:**

*Patrons*—Professors D. M. Y. Sommerville and F. Florence.

*President*—Miss Marwick.

*Secretary*—H. J. Haigh.

Meetings are held twice a month, on Friday evenings at 8 p.m., and, as far as possible, are devoted alternately to Mathematics and Physics.

**TENNIS CLUB:**

*President*—Professor F. P. Wilson.

*Secretary*—F. H. Paul.

**FOOTBALL CLUB:**

*President*—Professor Murphy.

*Captain*—W. H. Stainton.

*Secretary*—R. H. C. Mackenzie.

**MEN'S HOCKEY CLUB:**

*Patron*—Professor Adamson.

*Captain*—N. A. Foden.

*Secretary*—C. H. Hain.

**CRICKET:**

*Club Captain*—E. C. Wiren.

*Secretary*—R. H. C. Mackenzie.

**GOLF CLUB:**

*President*—Professor F. P. Wilson.

*Secretary*—J. B. Yaldwyn.

