



# Inequality Comparisons in a Multi-Period Framework: The Role of Alternative Welfare Metrics

John Creedy, Elin Halvorsen and Thor O. Thoresen

WORKING PAPER 08/2012  
September 2012

**Working Papers in Public Finance**



**Chair in Public Finance**  
Victoria Business School

**The Working Papers in Public Finance** series is published by the Victoria Business School to disseminate initial research on public finance topics, from economists, accountants, finance, law and tax specialists, to a wider audience. Any opinions and views expressed in these papers are those of the author(s). They should not be attributed to Victoria University of Wellington or the sponsors of the Chair in Public Finance.

Further enquiries to:  
The Administrator  
Chair in Public Finance  
Victoria University of Wellington  
PO Box 600  
Wellington 6041  
New Zealand

Phone: +64-4-463-9656  
Emil: [cpf-info@vuw.ac.nz](mailto:cpf-info@vuw.ac.nz)

Papers in the series can be downloaded from the following website:  
<http://www.victoria.ac.nz/cpf/working-papers>

# Inequality Comparisons in a Multi-Period Framework: The Role of Alternative Welfare Metrics\*

John Creedy<sup>†</sup>, Elin Halvorsen<sup>‡</sup> and Thor O. Thoresen<sup>‡</sup>

## Abstract

This paper considers the use of alternative welfare metrics in evaluations of income inequality in a multi-period context. Using Norwegian longitudinal income data, it is found, as in many studies, that inequality is lower when each individual's annual average income is used as welfare metric, compared with the use of a single-period accounting framework. However, this result does not necessarily hold when aversion to income fluctuations is introduced. Furthermore, when actual incomes are replaced by expected incomes (conditional on an initial period), using a model of income dynamics, higher values of inequality over longer periods are typically found, although comparisons depend on inequality and variability aversion parameters. The results are strongly influenced by the observed high degree of systematic regression towards the (geometric) mean, combined with a large extent of individual unexpected effects.

Keywords: income mobility, welfare evaluations, relative mobility process

JEL: D31; C23; I31

---

\*This work was supported by the Research Council of Norway. We thank Philippe van Kerm and other participants at the microseminar of CEPS/INSTEAD, Differdange (Luxembourg), for comments on an earlier version of this paper. Useful comments were also obtained from John K. Dagsvik and participants at seminars in Statistics Norway.

<sup>†</sup>Victoria University of Wellington and New Zealand Treasury, on leave from The University of Melbourne. E-mail: jcreedy@unimelb.edu.au

<sup>‡</sup>Research Department, Statistics Norway, 0033 Oslo, Norway. E-mail: elin.halvorsen@ssb.no, thor.olav.thoresen@ssb.no

# 1 Introduction

Evaluations of changes in the distribution of income must begin by deciding on a number of fundamental ingredients, each of which involves value judgements. First, a choice of ‘welfare metric’, concerning what is to be measured for each unit of analysis, must be made. Secondly, a decision is needed regarding the time period of analysis. Thirdly, the unit of analysis itself must be chosen. Finally, the form of ‘social evaluation function’, which encapsulates further explicit distributional value judgements, has to be specified. The present paper explores the use of alternative welfare metrics in a multi-period context, using the individual as the basic unit of analysis and an additive, individualistic Paretean social welfare function reflecting belief in the ‘principle of transfers’ (whereby a transfer from relatively rich to poor individuals, leaving their rankings unchanged, is considered an improvement). The welfare metrics are based on alternative income concepts rather than, say, consumption or utility measures which allow for variations in the value of leisure time.

Consideration of a multi-period context necessarily introduces the role of income mobility. This implies that inequality of income measured over a longer period is lower than that in the highest single year.<sup>1</sup> A further argument concerns comparative static changes: if higher annual income inequality is associated with increased relative income mobility, it is possible that inequality of income measured over several years is lower. Hence, longer-period inequality may fall, and welfare might increase, despite the rise in annual income inequality: this is referred to as a ‘mobility offsetting’ argument. However, the welfare metric could allow for other effects.<sup>2</sup> For example, if there is imperfect substitutability of incomes over time (Atkinson, Bourguignon and Morrison, 1992) and individuals are averse to income variability, the offsetting argument is weakened; see Creedy and Wilhelm (2002).

The discussion is typically, as above, carried out in terms of *ex-post* income measures. An alternative approach, explored here, is to attempt to allow explicitly for the uncertainty associated with mobility by constructing a welfare metric based on an *ex-ante* income measure. This in turn requires the use of a model of expectations formation based on observed income dynamics. The association between mobility and ex-ante

---

<sup>1</sup>Conditions under which inequality is lower than in all years are examined by Creedy (1997a).

<sup>2</sup>The question of whether income mobility represents equality of opportunity, as in Bénabou and Ok (2001a), is not considered here.

income uncertainty has also been stressed by Parker and Rougier (2001), Gottschalk and Spolaore (2002)<sup>3</sup> and Ben-Shahar and Sulganik (2008).<sup>4</sup>

This paper presents results where expected income is derived by estimating an autoregressive model of income dynamics. A closed-form expression for expected income, conditional on initial income, is obtained. Thus a ‘rational expectations’ approach is used, whereby individuals are assumed to form expectations based on the dynamic model of incomes and associated parameter estimates. The model specifies the logarithm of individual income in a given period as a function of the relative distance from the geometric mean of a previous period’s income, an individual fixed effect and a stochastic component. The social welfare function, and hence distributional value judgements, examined are based on the Atkinson (1970) inequality index. To illustrate the framework, longitudinal data for individuals in Norway over the period 1993–2005 are used.

An alternative approach to measuring long-period inequality involves the use of a ‘utility-equivalent annuity’, introduced by Nordhaus (1973) and defined as the constant value which gives the same lifetime utility as the actual time profile.<sup>5</sup> This can clearly allow for an aversion to variability as well as imperfect capital markets. This concept has recently been used by Aaberge and Mogstad (2010) and Aaberge *et al.* (2011) to examine equality of opportunity.<sup>6</sup> They distinguish two cases. First, equality of opportunity is reflected in equal outcomes for all those with the same ‘effort’, so that emphasis is on within-group inequality of utility-equivalent annuity. Second, between-group comparisons are made where groups are instead defined by common ‘opportunity sets’, and within-group inequality arising from different degrees of ‘effort’ are considered irrelevant. The authors refer to the former as an *ex-post* approach and the latter as an *ex-ante* approach. This interesting perspective clearly differs from the *ex-ante* concept examined in the present paper.

---

<sup>3</sup>They present a decomposition analysis where the extent to which future incomes depend on current income is separated from effects due to rank reversals. For other decompositions, see Ruiz-Castillo (2004), Van Kerm (2004) and Jenkins and Van Kerm (2006).

<sup>4</sup>Other studies involving mobility and long-term incomes include, for example, Shorrocks (1978a), Chakravarty, Dutta and Weymark (1985), Fields (2010) and Hungerford (2011). For surveys of mobility, see Atkinson, Bourguignon and Morrisson (1992), Maasoumi (1998) and Fields and Ok (1999).

<sup>5</sup>Comparisons using this and alternative measures, using a lifetime simulation model, are reported in Creedy (1997b).

<sup>6</sup>They also measure mobility in terms of the reduction in this longer-period income concept, following Shorrocks (1978a).

In Section 2 the data and the Atkinson index are briefly described. Section 3 presents results using *ex-post* welfare metrics. Section 4 introduces *ex-ante* income uncertainty and presents a procedure for using expected future incomes in the welfare metric. Section 5 summarises the main findings.

## 2 Data and Inequality Measurement

The data used below come from *Income Statistics for Persons and Families in Norway 1993–2005* (Statistics Norway, 2006). These data contain register-based information on the whole population, derived primarily from information retrieved from all income tax returns in the Directorate of Taxes' Register of Personal Tax-Payers. The choice of time period, 1993–2005, is conditioned on the register being established in 1993, and the desirability of avoiding the tax reform of 2006, as a reform normally involves measurement challenges. Nevertheless, as data primarily are used to illustrate the alternative metrics, the choice of time period mainly follows from the desire to explore data from a sufficiently long time period to be divided into two periods of equal length.

The income measure is annual income after tax. Thus income is defined as labour income, plus positive capital income, plus net capital gains, plus transfers minus direct taxes. This is the definition used in all official income statistics in Norway. Negative capital income (interest paid on mortgages) is not included in the definition because there is no corresponding income from housing in the statistics. Estimates of income mobility are typically sensitive to persons entering and leaving the labour market. Hence, persons under age 26 and above 65 are excluded, and those with an income below 100NOK<sup>7</sup> in any year are excluded. The effects of inflation have been removed by deflating all incomes to the 1998 level using the consumer price index.

Results are presented using the well-known Atkinson (1970) inequality measure. Let individual  $i$ 's income (the welfare metric, ignoring time for now) be denoted  $y_i$ , for  $i = 1, \dots, n$ . The Atkinson measure is based on the additive social welfare function,  $W = W(y_1, \dots, y_n)$  of the form  $W = \sum_{i=1}^n U(y_i)$ , where  $U(y_i)$  is the weight attached

---

<sup>7</sup>This is equivalent to US\$15.50 using 2005 exchange rate.

to  $y_i$ , and is specified, for  $\varepsilon \neq 1$ , as:<sup>8</sup>

$$U(y_i|\varepsilon) = \frac{y_i^{1-\varepsilon}}{1-\varepsilon} \quad (1)$$

Hence  $\varepsilon \geq 0$  captures the concavity of  $U$ , corresponding to the aversion to relative inequality. Let  $y_{EDE}$  denote the equally distributed equivalent income, that is, the income which, if obtained by each person, gives the same social welfare as the actual distribution. Hence, for  $\varepsilon \neq 1$ :

$$y_{EDE} = \left( \frac{1}{n} \sum_{i=1}^n y_i^{1-\varepsilon} \right)^{\frac{1}{1-\varepsilon}} \quad (2)$$

Atkinson's index of inequality,  $I$ , is the proportional difference between the arithmetic mean,  $\bar{y}$ , and  $y_{EDE}$ , so that:

$$I = \frac{\bar{y} - y_{EDE}}{\bar{y}} \quad (3)$$

and  $I$  reflects the 'wastefulness of inequality'.

### 3 Alternative Ex-post Evaluations

Figures 1 and 2 show, for the period 1993–2005 and for two inequality aversion parameters, the time profiles of inequality and the equally distributed equivalent. The period may be divided into two periods of equal length, 1994–99 and 2000–05.<sup>9</sup> The first period reflects a relatively stable degree of inequality while the second period displays more variability, initially decreasing and then increasing steadily. Both the general economic development and tax-payers' behavioural reactions to tax legislative changes have influenced the observed income patterns. The first part of the time period coincides with a period of high economic growth (GDP growth above 4 per cent in the period 1994–97), then growth rates are lower and more variable in the period 1998–2005 (but above 2 per cent in all years, except in 2003). However, from an income distribution perspective, it is suggested that the development of the personal income tax schedule is at least equally important. The tax reform of 1992 introduced a dual

---

<sup>8</sup>If  $\varepsilon = 1$ ,  $y_i^{1-\varepsilon} / (1-\varepsilon)$  is replaced by  $\log y$ .

<sup>9</sup>1993 is therefore not used in inequality comparisons, but as a base year when estimating ex-ante incomes.

income tax system, which combines a low proportional tax rate on capital income and progressive tax rates on labour income.

These separate schedules for capital and labour income created obvious incentives for taxpayers to take advantage of the lower tax on capital. For example, Thoresen and Alstadsæter (2010) show that owners of small businesses were able to gain from this schedule by changing organizational form. Overall, there was a notably increase in (low taxed) dividend income transfers to households over the period, from less than 10 billion in 1994 to nearly NOK100 billion in 2005. Only 2001 does not fit into the steady upward trend, as there was a temporary tax on dividends for shareholders that year. Furthermore, corporations brought forward their distribution of profits because of the pre-announced tax reform of 2006 (Alstadsæter and Fjærli, 2009), given that it was evident that the reform introduced taxation of dividends at both the corporate and individual level (in contrast to the 1992 reform, which had only corporate-level taxation), through a shareholder income tax; see Sørensen (2005) for further details. As dividend income is unequally dispersed – for example, 95 per cent of dividends were received by individuals in decile 10 in 2004 – this has resulted in a substantial increase in post-tax income inequality over the period (with an exception for 2001) and changes in the composition of income across income distributions; for more details see Lambert and Thoresen (2009, Figure 3).

A time subscript must now be added to each individuals' income. For convenience, the following ignores discounting. Consider first an *ex-post* evaluation over  $T$  periods which uses as welfare metric for each individual the average annual income,  $\bar{y}_i = \frac{1}{T} \sum_{t=1}^T y_{it}$ . Hence the welfare function is not actually concerned with the way in which any individual's income is distributed over the time period, and thus may be said to reflect a lack of concern for the nature of the mobility process. For the period 1994–2005, the use of the average annual income as welfare metric for each individual gives Atkinson inequality measures of 0.076, 0.134 and 0.210 respectively for values of  $\varepsilon$  of 0.5, 1.0 and 1.5. These each reflect value judgements which tolerate substantial leaks in making equalising transfers.<sup>10</sup> These values may be compared with the annual average inequality measures of 0.099, 0.181 and 0.298 respectively. The use of a longer period whereby individual incomes are averaged is thus equalising in this case.

---

<sup>10</sup>For example, if 1 unit is taken from A to make a transfer to B, where A is twice as rich as B, a transfer of 0.5 units leaves social welfare unchanged if  $\varepsilon = 1$ . This falls to 0.25 units if  $\varepsilon = 2$ .



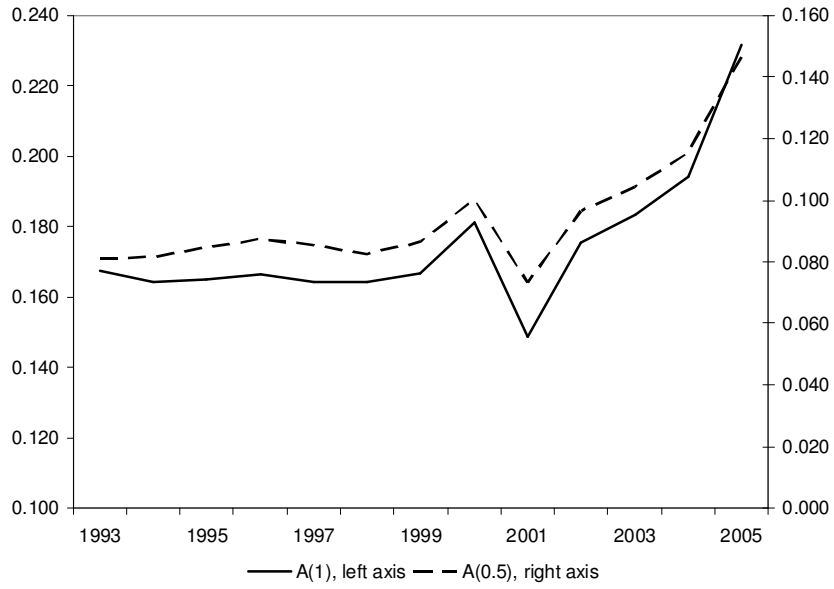


Figure 1: Atkinson Inequality Measures, Annual Income 1993-2005,  $\varepsilon = 0.5$  and  $\varepsilon = 1$

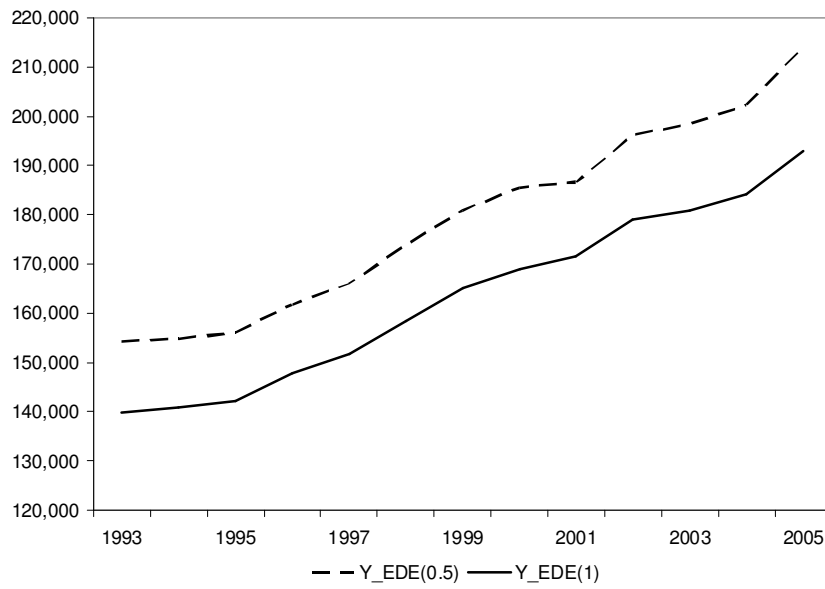


Figure 2: Equally Distributed Equivalent Annual Income: 1993-2005

Table 1: Atkinson Inequality Measures: Annual Average Income Inequality and Inequality with Annual Average as Welfare Metric

	Period 1994–1999			Period 2000–2005		
	$\varepsilon = 0.5$	$\varepsilon = 1.0$	$\varepsilon = 1.5$	$\varepsilon = 0.5$	$\varepsilon = 1.0$	$\varepsilon = 1.5$
Inequality: Annual average of single year values						
$\bar{I}_y$	0.084	0.165	0.263	0.108	0.188	0.307
Using each individual's annual average as welfare metric						
$I_{\bar{y}}$	0.071	0.134	0.183	0.082	0.147	0.228

Further details for the two sub-periods are shown in Table 1.<sup>11</sup> For the second period, the absolute reduction in inequality when using annual average income as the welfare metric compared with annual average inequality, is double the reduction obtained for the first period. The inequality-reducing effects of using a longer accounting period, mentioned above, therefore appears to be greater in a period when annual inequality is generally increasing.<sup>12</sup> However, the percentage reduction in inequality is larger in the first period for  $\varepsilon = 1.5$ . This arises because the very high degree of inequality aversion places more emphasis on the low end of the income distribution.

The income mobility which produces the increasing annual inequality is thus also responsible for reducing the inequality of a multi-period income measure (each person's annual average) below average annual inequality. However, mobility may not necessarily be seen as beneficial from an individual's point of view. It may also be seen as an undesirable source of economic instability. For example, individuals may for some reason be unable to smooth consumption over time when facing income fluctuations and they might be averse to such variability in income. Imperfections of capital markets or other constraints may prevent individuals from smoothing consumption over time; see Atkinson, Bourguignon and Morrison (1992).<sup>13</sup>

<sup>11</sup>Standard errors of the estimates, which can be obtained by bootstrapping procedures, are not reported as they in general are very small due to the sample size (more than 2,600,000 observations).

<sup>12</sup>This of course differs from the comparative static argument discussed in the introduction, and examined in detail by Creedy and Wilhelm (2002) in terms of inequality and social welfare.

<sup>13</sup>Shorrocks (1978a) argues that mobility is always desirable, whereas Chakravarty, Dutta and Weymark (1985) establish a no-mobility hypothetical benchmark from which they can distinguish between desirable and undesirable mobility. Like King (1983), they make use of the equally distributed equivalent idea. The difficulties of establishing a reasonable social welfare understanding of income mobility is discussed by Atkinson (1981), Dardanoni (1993) and Fields (2010).

It may therefore be desired to allow, in the welfare metric, for an aversion to income variability, as suggested by Creedy and Wilhelm (2002); see also Jarvis and Jenkins (1998) on the disutility of income volatility. This can be done, in an *ex-post* context, by using instead of  $\bar{y}_i$  a welfare metric,  $\tilde{y}_i$ , defined as:

$$\tilde{y}_i = \frac{1}{T} \sum_{t=1}^T \frac{y_{it}^{1-\gamma}}{1-\gamma} \quad (4)$$

The parameter  $\gamma$  measures the degree of aversion to variability of income over time, and the same parameter is assumed to apply to all individuals. As *ex-post* values are used, the aversion coefficient,  $\gamma$ , is not interpreted in terms of risk aversion: this is discussed in Section 4 below. The relative values of  $\varepsilon$  and  $\gamma$  determine whether inequality aversion (of the judge whose value judgements are represented by the welfare function) is high enough to overcome the individuals' aversion to income variability over time. When aversion to income variability is high relative to inequality aversion, a more 'static' society is preferred, in which income is more stable at the 'cost' of higher inequality of multi-period income.

Table 2: Atkinson Inequality Measures with Aversion to Income Fluctuations

	Period 1994–1999			Period 2000–2005		
	$\varepsilon = 0.5$	$\varepsilon = 1.0$	$\varepsilon = 1.5$	$\varepsilon = 0.5$	$\varepsilon = 1.0$	$\varepsilon = 1.5$
$\gamma = 0$	0.071	0.134	0.217	0.082	0.147	0.289
$\gamma = 0.5$	0.085	0.148	0.236	0.098	0.161	0.311
$\gamma = 2.0$	0.130	0.206	0.349	0.144	0.217	0.375
$\gamma = 3.0$	0.151	0.235	0.427	0.166	0.244	0.499

Table 2 shows the extent to which the values in Table 1 are increased when aversion to intertemporal fluctuations is introduced. In order to eliminate the effect of general income growth over time, incomes were adjusted so that average annual income is constant (and equal to the overall mean) in each period. Hence the inequality values in the first row of Table 2 differ slightly from those in the final row of Table 1. It is clear that inequality increases as individuals' aversion to income variability increases. The inequality differences between the first and second sub-periods are less influenced by aversion to income variability over time. The differences for  $\gamma = 0$  and positive  $\gamma$ s are approximately similar in the two subperiods. As the last period involves a temporary tax on dividends for the shareholders in 2001, one may expect stronger effects from

increases in the value of  $\gamma$  in that period, but no clear manifestation of such effects is evident in Table 2.

## 4 An Ex-ante Perspective

The suggestion that relative income mobility is associated with uncertainty leads to the idea that an alternative evaluation may be based on an ex-ante measure, rather than ex-post incomes as in the previous section. For example, Shorrocks (1978b, p.1016) argues that ‘interest in mobility is not only concerned with movement but also predictability’. Furthermore, the uncertainty aspect of mobility is emphasised by contributions which see mobility in terms of future opportunities, as in Bénabou and Ok (2001), or account for origin independence, as in Gottschalk and Spolaore (2002). An ex-ante perspective is introduced in subsection 4.1. The approach requires a model of income dynamics and this is described in subsection 4.2. Results using the new metric are presented in subsection 4.3

### 4.1 The Welfare Metric

The approach considered here is to replace the above welfare metric with one defined in terms of expected incomes, conditional on income in a specified period,  $E(y_{it}|y_{i0})$ , so that (4) is replaced by:

$$E(\tilde{y}_i) = \frac{1}{T} \sum_{t=1}^T \frac{E(y_{it}^{1-\gamma} | y_{i0})}{1-\gamma} \quad (5)$$

Here the parameter  $\gamma$  can be interpreted in terms of risk aversion. In a one-commodity setting and with indifference with respect to the timing of risk, risk aversion is the inverse of the elasticity of intertemporal substitution. Thus resistance to intertemporal substitution, or variability aversion, is closely related to risk aversion.

Application of this approach therefore requires knowledge of the conditional expectation of future incomes. The following subsection proposes a measure of expected income obtained by modelling the income process.

## 4.2 Modelling Income Dynamics

The aim of this section is to present and estimate a simple model of individuals' expectations of future incomes which can be used to produce *ex ante* income measures. Consider a dynamic process containing both a stochastic component and a component in which changes depend on the position of individuals relative to the geometric mean; see also Creedy (1985) and Creedy and Wilhelm (2002). As before,  $y_{it}$  denotes individual  $i$ 's income in period  $t$ , and let  $\mu_t$  denote the mean of logarithms in period  $t$ , with  $m_t = \exp(\mu_t)$  as the geometric mean. The income process can be written as:

$$y_{it} = \left( \frac{y_{it-1}}{m_{t-1}} \right)^\beta \exp(\mu_t + v_i + \eta_{it}) \quad (6)$$

where the stochastic component consists of an individual-specific effect,  $v_i$ , and a random component,  $\eta_{it}$ , assumed to be independent of income, with zero mean and a variance in each period of  $\sigma_\eta^2$ . Equation (6) can be rewritten as:

$$(\log y_{it} - \mu_t) = \beta (\log y_{it-1} - \mu_{t-1}) + v_i + \eta_{it} \quad (7)$$

The autoregressive parameter,  $\beta$ , captures variations in income which decline more slowly over time. In other words it reflects movements in income that, while not permanent, tend to persist for several years. Suppose also that in this simple income process, the autoregressive parameter and income variance is common for all individuals, and heterogeneity in the process is represented through the individual fixed effect (individual fixed level relative to the mean) and the error term.

Table 3 reports results of using several estimators. These include the least squares dummy variables (LSDV), and generalised method of moments (GMM) estimators as in Arellano and Bond (1991) and Blundell and Bond (1998). Because the lagged dependent variable is correlated with the error term, it has been shown that the use of LSDV result in biased estimates. Anderson and Hsiao (1981) suggested first eliminating the fixed effect by taking first differences, and then using  $y_{t-2}$  as instrument for  $\Delta y_t$ . However, this does not exploit all the relevant moment conditions so it is not the efficient GMM estimator. Arellano and Bond (1991) derived other moment conditions to be used in GMM estimation. This estimator is known as the Arellano-Bond GMM estimator. Other instruments have been suggested by a succession of researchers, such as the Arellano and Bover/Blundell and Bond system estimator (Arellano and Bover,

Table 3: Parameter Estimates for the Income Mobility Process

Method and Parameter	All years	1994-1999	2000-2005
LSDV			
$\beta$	0.452 (0.001)	0.279 (0.001)	0.227 (0.001)
$\sigma_\eta$	0.276	0.280	0.282
AB-GMM			
$\beta$	0.492 (0.002)	0.477 (0.001)	0.351 (0.002)
$\sigma_\eta$	0.415	0.308	0.316
GMMSYS			
$\beta$	0.476 (0.001)	0.486 (0.001)	0.387 (0.001)
$\sigma_\eta$	0.419	0.309	0.313
GMM-MA(1)			
$\beta$	0.473 (0.002)	0.527 (0.003)	0.443 (0.003)
$\sigma_\eta$	0.524	0.406	0.436

Note: Robust standard errors are in parentheses below parameter estimates.

1995; Blundell and Bond, 1998), which uses moment conditions in which lagged first differences of the dependent variable are instruments for the level equation. In practice, it is difficult to find good instruments for the first-differenced lagged dependent variable, which can itself create problems for the estimation. Kiviet (1995) shows that panel data models using instrumental variable estimation often lead to poor finite sample efficiency and bias. Also, tests show that none of the methods rejects the assumption of no autocorrelation in first differenced errors. Thus, the final specification is a GMM model assuming moving-average serial correlation in the residuals.<sup>14</sup>

Table 3 shows that a common result for all specifications is that the estimated value of  $\beta$  is higher in the first sub-period than in the second sub-period, while the estimate of  $\sigma_\eta^2$  is higher in the second sub-period. Since the standard errors are low, it may be inferred that the estimated  $\beta$ 's in the two periods are also significantly different from each other. The lower degree of regression towards the mean and lower variance in the first period implies lower income mobility, and therefore higher predictability

<sup>14</sup>Lags three or higher are used as valid instruments for the differenced equation.

of future incomes. Conversely, the parameter values imply higher mobility and less predictability in the second sub-period. In the following subsection, reported results are based on the Arrelano-Bond GMM estimator.

The model specified in (7) is simple compared with a number other approaches used. A less parsimonious model, such as the error component model, which is now a standard model in the income process literature<sup>15</sup> would probably provide more reliable estimates for the income process. Adding heterogeneity in the model parameters as in Baker and Solon (2003) and Browning *et al.* (2010) would improve the model even more.

However, the basic model used here has been chosen for two reasons. First, it is helpful to keep the perspective of the social planner. An income process is specified that the planner is assumed to use for prediction of future incomes, based on observations of current incomes. All individual characteristics, observable or unobservable, that may explain individual income levels are captured by the individual fixed effect. We assume that the planner, possibly with the help of an econometrician, has estimated the distribution of these fixed effects on historical data, and furthermore, assumes that these are constant over time. Second, the simple autoregressive income process is in line with the Markov-models often used in the income mobility index literature, and therefore provides a link between the income mobility literature and the more econometrically orientated income process literature.

Including other explanatory variables, such as age, family composition and education would substantially complicate the prediction of future incomes. While age is straightforward to predict, prediction of future family composition is rather demanding. Education is challenging too, as the specification already accounts for a fixed effect. Thus, fixed effects soak up much of the explanatory power of variables that are either time-invariant or close to time-invariance. We have explored the effects of using other explanatory variables, such as age, family composition and education. The estimated autoregression coefficients became somewhat lower, but the overall result did not change. This suggests that the main difference between income mobility in the two periods is due to genuine income dynamics rather than, for instance, substantial differences in family dynamics. Comparisons were also made using alternative income

---

<sup>15</sup>This literature is represented by the works of Lillard and Willis (1978), MaCurdy (1982), Abowd and Card (1989), Baker (1997), Carroll and Samwick (1997), and Ramos (2003).

definitions. Labour income yields similar estimates for the autoregression coefficient, but exhibits a much larger variance. For gross income there is less regression towards the mean (that is, higher  $\beta$ ) than for the two other income definitions, and the difference between the two periods is larger. Also, as expected, the standard deviation of gross income is higher than for income after tax.

### 4.3 Inequality Using the Ex-ante Welfare Metric

In order to obtain measures for the contribution of the estimated income process to the overall ex-ante welfare evaluation, a closed-form expression for expected income as a function of income in the initial period,  $E(y_{it}|y_{i0})$ , is required. It is shown in the Appendix that:

$$E(y_{it}|y_{i0}, v_i) = \exp \left\{ \mu_t + \beta^t (\log y_{i0} - \mu_0) + v_i \left( \frac{1 - \beta^t}{1 - \beta} \right) + \frac{1 - \beta^{2t}}{2(1 - \beta^2)} \sigma_\eta^2 \right\} \quad (8)$$

where estimates of individual fixed-effects,  $v_i$ , are obtained using their sample counterparts. The corresponding equally distributed equivalent in terms of expected income,  $EDE_{E(y|y_0)}$ , can be expressed as:

$$EDE_{E(y|y_0)} = \left[ \frac{1}{n} \sum_{i=1}^n \left( \frac{1}{T} \sum_{t=1}^T E(y_{it}|y_{i0})^{1-\gamma} \right)^{\frac{1-\varepsilon}{1-\gamma}} \right]^{\frac{1}{1-\varepsilon}} \quad (9)$$

from which, given the arithmetic mean, the Atkinson measure can be obtained in the usual way. In this case it depends on the degree of regression towards the mean, the income variance, the degree of aversion to inequality and the degree of aversion to fluctuations in income. When  $\beta < 1$ , the initial (relative) position is given less weight over time, while the role of the individual-specific position is increasing over time. Expected income is also increasing over time.

The inequality measures for the *ex-ante* welfare metric are shown in Table 4, where again any effects of income growth are eliminated by maintaining arithmetic mean constant. These may be compared with Table 2. For the sub-period 1994–99, inequality is lower for all values of  $\varepsilon$  examined and for the variability aversion coefficients of 0 and 0.5. For the very high values of  $\gamma$  of 2.0 and 3.0, inequality is higher when the ex-ante measure is used, particularly for the high inequality aversion coefficient. The estimated value of  $\beta$  is rather low while that of  $\sigma_\eta^2$  is high compared with values reported in earlier



Table 4: Atkinson Inequality Measures for Expected Income

	Period 1994–1999			Period 2000–2005		
	$\varepsilon = 0.5$	$\varepsilon = 1.0$	$\varepsilon = 1.5$	$\varepsilon = 0.5$	$\varepsilon = 1.0$	$\varepsilon = 1.5$
$\gamma = 0$	0.004	0.068	0.135	0.109	0.165	0.218
$\gamma = 0.5$	0.037	0.095	0.165	0.150	0.208	0.246
$\gamma = 2.0$	0.132	0.221	0.417	0.250	0.367	0.492
$\gamma = 3.0$	0.166	0.394	0.513	0.290	0.481	0.603

studies; see Creedy (1985). The considerable variability implied by the high  $\sigma_\eta^2$  would produce increasing annual inequality over time, without the low value of  $\beta$ , implying considerable regression towards the mean. In the expression for  $E(y_{it}|y_{i0})$ , the effects of terms involving powers of  $\beta$  rapidly become insignificant. Expected incomes are dominated by the high  $\sigma_\eta^2$  which, for the high mobility-aversion cases, implies a higher measured inequality. From (8), setting all terms involving  $\beta^t$  and  $\beta^{2t}$  to zero<sup>16</sup> and rearranging gives:

$$\log E(y_{it}) - \mu_t = \frac{v_i}{1 - \beta} + \frac{\sigma_\eta^2}{2(1 - \beta^2)} \quad (10)$$

Hence the variance of logarithms of expected income soon becomes  $\sigma_v^2 / (1 - \beta)^2$ , where  $\sigma_v^2$  is the variance of the fixed effect in the autoregressive income-generation equation. Therefore for higher  $\sigma_v^2$  and lower  $\beta$ , as in the second sub-period considered, inequality of expected values is quickly increasing towards a relatively high value.

In the *ex-post* case, there is less inequality than anticipated as a result of the regression towards the mean. For the second sub-period, the role of unanticipated, but systematically equalising, mobility is even greater and  $\beta$  is lower. Hence the *ex-ante* welfare metric produces higher inequality, for nearly all combinations of variability aversion and inequality aversion parameters, than for the *ex-post* metric. The exceptions are for the combination of low variability aversion with very high inequality aversion. Also, the inequality differences between the two sub-periods are maintained or increased when moving from the *ex-post* to the *ex-ante* perspective.

Discounting has been ignored here for ease of exposition. Introducing discounting of time periods would imply that greater weight is placed on the first period. In other words, the initial distribution would play a relatively larger role than without discount-

<sup>16</sup>This is the same as replacing  $E(y_{it}|y_{i0})$  by  $E(y_{it})$ , that is the unconditional expectation.

ing. As long as time preference is homogeneous across individuals and constant over time, introducing discounting would not change the qualitative difference between the two sub-periods considered.<sup>17</sup> But, as the initial distributions become more dominant under discounting, the inequality estimates in Table 4 would be modestly increased.

It is therefore necessary to consider the role of the initial distributions. It may be argued that it is difficult to interpret the results for the two periods in Table 4 in terms of different income processes because they begin with different initial distributions. For this reason two sensitivity analyses were carried out. First, it was assumed simply that  $(\log y_{i0} - \mu_0) = 0$  for all individuals (so that the fixed effect is the only individual variation). Second, the same initial distribution was used in both periods (hence, the second period process was estimated using the initial 1993 distribution). Unreported results show that the results are not sensitive to the choice of initial distributions. This lack of sensitivity is likely to arise because of the high degree of regression towards the mean.

## 5 Conclusions

The aim of this paper has been to consider the use of alternative welfare metrics in evaluations of income inequality when a multi-period income measure is used, and hence relative income mobility plays a crucial role in influencing the relationship between short- and long-period inequality. One basic approach, most commonly adopted in income distribution studies, is to base measures on *ex-post* magnitudes. Using Norwegian longitudinal income data, it was found, as in many studies, that income inequality is lower when each individual's annual average income is used as welfare metric, compared with the use of a single-period accounting framework. However, the longer accounting period can produce both lower and higher inequality than annual measures, depending on the assumed degree of aversion to income fluctuations over time.

The second approach took as its starting point the argument that relative income mobility introduces uncertainty about future incomes, so that it may be desired to evaluate inequality using an *ex-ante* approach. To this end, a regression model of income dynamics was used in order to generate individuals' expected values of future

---

<sup>17</sup>However, if individuals were not indifferent to the timing of risk, then introducing discounting would lead to a preference for early resolution of risk.

income, conditional on actual income in a specified initial period. The use of expected incomes was found generally to produce higher values of inequality over longer periods, although again comparisons depend on the assumption regarding the aversion to income inequality of the social welfare function, and aversion to income fluctuations on the part of individuals. The results were strongly influenced by the observed high degree of systematic regression towards the (geometric) mean, combined with a large extent of random proportional income changes. The distinction between expected and unexpected mobility was thus found to be important.

In the choice of welfare metric there is of course no single ‘correct’ approach, and the contribution of the economist is to investigate the implications of adopting alternative value judgements. The present paper is therefore in this spirit of extending the range of value judgements which can be examined.

## Appendix A: Expected Income

This appendix derives the expected value of an individual's income, conditional on income in an earlier period. Define  $z_t$ , dropping individual subscripts, as:

$$z_t = (\log y_t - \mu_t) \quad (\text{A.1})$$

Inserting  $z_t$  in equation (7) gives:

$$z_t = \beta z_{t-1} + v + \eta_t \quad (\text{A.2})$$

Backwards induction yields:

$$\begin{aligned} z_t &= v + \eta_t + \beta (v + \eta_{t-1}) + \beta^2 (v + \eta_{t-2}) + \dots + \beta^{k-1} (v + \eta_{t-k+1}) + \beta^t z_{t-k} \\ &= \beta^t z_{t-k} + \sum_{s=0}^{k-1} v \beta^s + \xi_t \end{aligned} \quad (\text{A.3})$$

where:

$$\xi_t = \eta_t + \beta \eta_{t-1} + \beta^2 \eta_{t-2} + \dots + \beta^{k-1} \eta_{t-k+1} \quad (\text{A.4})$$

Using  $y_t = \exp(z_t + \mu_t)$  from (A.1):

$$y_t = \exp \left\{ \mu_t + v \left( \frac{1 - \beta^k}{1 - \beta} \right) + \xi_t + \beta^t (\log y_{t-k} - \mu_{t-k}) \right\} \quad (\text{A.5})$$

The variance of  $\log y_t$  is thus equal to  $\text{Var}(\xi_t)$ , which, if  $\eta$  is normally distributed, is from (A.4) given by a weighted sum of normal variables. This is also normally distributed, with  $\text{Var}(\sum_i a_i X_i) = \sum_i a_i^2 \text{Var} X_i$ . Hence the variance of  $\log y_t$  is:

$$\text{Var} \left( \sum_{s=0}^{k-1} v \beta^s \right) = \sigma_\eta^2 \sum_{s=0}^{k-1} \beta^{2s} = \frac{1 - \beta^{2k}}{1 - \beta^2} \sigma_\eta^2 \quad (\text{A.6})$$

In general, if the variable  $x$  is lognormally distributed with mean and variance of logarithms of  $m$  and  $s^2$  respectively, then  $E(x) = \exp \left( m + \frac{s^2}{2} \right)$ . Taking expectations of  $y$ , gives:

$$E(y_t | y_{t-k}) = \exp \left\{ \mu_t + \beta^k (\log y_{t-k} - \mu_{t-k}) + v \left( \frac{1 - \beta^k}{1 - \beta} \right) + \frac{1 - \beta^{2k}}{2(1 - \beta^2)} \sigma_\eta^2 \right\} \quad (\text{A.7})$$

Setting  $k = t$  gives the result in (8) above.

## References

- [1] Aaberge, R., Mogstad, M. and Peragine, V. (2011) Measuring Long-term Inequality of Opportunity. *Journal of Public Economics*, 95, 193–204.
- [2] Aaberge, R. and Mogstad, M. (2010) On the Measurement of Long-term Income Inequality and Income Mobility. *IZA Discussion Paper*, no. 4699.
- [3] Abowd, J. and D. Card (1989) On the Covariance Structure of Earnings and Hours Changes, *Econometrica*, 57, 411–445.
- [4] Alstadsæter, A. and E. Fjærli (2009) Neutal Taxation of Shareholder Income? Corporate Responses to an Announced Dividend Tax. *International Tax and Public Finance*, 16, 571–604.
- [5] Anderson, T.W. and C. Hsiao (1981) Estimation of Dynamic Models with Error Components. *Journal of the American Statistical Association*, 589–606.
- [6] Arellano, M. and S. Bond (1991) Some Tests of Specification for Panel Data: Monte Carlo Evidence and an Application to Employment Equations. *Review of Economic Studies*, 58, 277–297.
- [7] Arellano, M. and O. Bover (1995) Another Look at the Instrumental-Variable Estimation of Error-Components Models. *Journal of Econometrics*, 68, 29–51.
- [8] Atkinson, A.B. (1970) On the Measurement of Inequality. *Journal of Economic Theory*, 2, 244–263.
- [9] Atkinson, A.B. (1981) The Measurement of Economic Mobility. In *Inkommens verdeling en Openbare Financien* (Ed. by P.J. Eggelshaven and L.J. van Gemerden). Utrecht: Het Spectrum.
- [10] Atkinson, A.B. F. Bourguignon and C. Morrison (1992) *Empirical Studies of Earnings Mobility*. Chur: Harwood Academic Publishers.
- [11] Baker, M. (1997) Growth Rate Heterogeneity and the Covariance Structure of Life-Cycle Earnings, *Journal of Labor Economics*, 15, 338–375.

- [12] Baker, M. and G. Solon (2003) Earnings Dynamics and Inequality among Canadian Men, 1976–1992: Evidence from Longitudinal Income Tax Records, *Journal of Labor Economics*, 21, 289–321.
- [13] Bénabou, R. and E.A. Ok (2001) Mobility as Progressivity: Ranking Income Processes according to Equality of Opportunity. NBER Working Paper No 8431. Cambridge (MA): National Bureau of Economic Research.
- [14] Ben-Shahar, D. and E. Sulganik (2008) Partial Ordering of Unpredictable Mobility with Welfare Implications. *Economica*, 75, 592–604.
- [15] Blundell, R. and S. Bond (1998) Initial Conditions and Moment Restrictions in Dynamic Panel Data Models. *Journal of Econometrics*, 87, 115–143.
- [16] Browning, M., M. Ejrnæs and J. Alvarez (2010) Modelling Income Processes with Lots of Heterogeneity, *Review of Economic Studies*, 77, 1353–1381.
- [17] Carroll, C.D. and A.A. Samwick (1997) The Nature of Precautionary Wealth, *Journal of Monetary Economics*, 40, 41–71.
- [18] Chakravarty, S.R., B. Dutta, and J.A. Weymark (1985) Ethical Indices of Income Mobility. *Social Choice and Welfare*, 2, 1–21.
- [19] Creedy, J. (1985) *Dynamics of Income Distribution*. Oxford: Basil Blackwell.
- [20] Creedy, J. (1997a) Inequality, Mobility and Income Distribution Comparisons. *Fiscal Studies*, 18, 293–302.
- [21] Creedy, J. (1997b) Lifetime Inequality and Tax Progressivity with Alternative Income Concepts. *Review of Income and Wealth*, 43, 283–295.
- [22] Creedy, J. and M. Wilhelm (2002) Income Mobility, Inequality and Social Welfare. *Australian Economic Papers*, 41, 140–150.
- [23] Dardanoni, V. (1993) Measuring Social Mobility. *Journal of Economic Theory*, 61, 372–394.
- [24] Fields, G.S. (2010) Does Income Inequality Equalize Longer-term Incomes? New Measures of an Old Concept. *Journal of Economic Inequality*, 8, 409–427.

- [25] Fields, G.S. and E.A. Ok (1999) The Measurement of Income Mobility: an Introduction to the Literature. In *Handbook of Inequality Measurement* (Ed. by J. Silber). Dordrecht: Kluwer Academic Publishers.
- [26] Gottschalk, P. and E. Spolaore (2002) On the Evaluation of Economic Mobility. *Review of Economic Studies*, 69, 191–208.
- [27] Hungerford, T.L. (2011) How Income Mobility Affects Income Inequality: US Evidence in the 1980s and the 1990s. *Journal of Income Distribution*, 20, 83–103.
- [28] Jarvis, S. and S.P. Jenkins (1998) How Much Income Mobility is There in Britain? *Economic Journal*, 108, 428–443.
- [29] Jenkins, S.P. and P. Van Kerm (2006) Trends in Income Inequality, Pro-poor Income Growth, and Income Mobility. *Oxford Economic Papers*, 58, 531–548.
- [30] King, M.A. (1983) An Index of Inequality: with Applications to Horizontal Inequity and Social Mobility. *Econometrica*, 51, 99–115.
- [31] Kiviet, J. F. (1995) On bias, inconsistency, and efficiency of various estimators in dynamic panel data models. *Journal of Econometrics*, 68, 53–78.
- [32] Lambert, P.J. and T.O. Thoresen (2009) Base Independence in the Analysis of Tax Policy Effects: with an Application to Norway 1992–2004. *International Tax and Public Finance*, 16, 219–252.
- [33] Lillard, L.A. and Y. Weiss (1979) Components of Variation in Panel Earnings Data: American Scientists, 1960–70, *Econometrica*, 47, 437–454.
- [34] Maasoumi, E. (1998) On Mobility. In *The Handbook of Applied Economic Statistics* (Ed. by D. Giles and A. Ullah), pp. 119–176. New York: Marcel Dekker.
- [35] MaCurdy, T.E. (1982) The Use of Time Series Processes to Model the Error Structure of Earnings in Longitudinal Data Analysis, *Journal of Econometrics*, 18, 83–114.
- [36] Nordhaus, W. (1973) The Effects of Inflation on the Distribution of Economic Welfare. *Journal of Money, Credit and Banking*, 5, 465–508.

- [37] Parker, S.J. and J. Rougier (2001) Measuring Social Mobility as Unpredictability. *Economica*, 68, 63–76.
- [38] Ramos, X. (2003): The Covariance Structure of Earnings in Great Britain, 1991-1999, *Economica*, 70, 353–374.
- [39] Ruiz-Castillo, J. (2004) The Measurement of Structural and Exchange Income Mobility. *Journal of Economic Inequality*, 2, 219–228.
- [40] Shorrocks, A.F. (1978a) Income Inequality and Income Mobility. *Journal of Economic Theory*, 19, 376–393.
- [41] Shorrocks, A.F. (1978b) The Measurement of Mobility. *Econometrica*, 46, 1013–1024.
- [42] Statistics Norway (2006) Income Statistics for Persons and Families, [http://www.ssb.no/english/subjects/05/01/inntpf\\_en/](http://www.ssb.no/english/subjects/05/01/inntpf_en/).
- [43] Sørensen, P.B. (2005) Neutral Taxation and Shareholder Income. *International Tax and Public Finance*, 12, 777–801.
- [44] Thoresen, T.O. and A. Alstadsæter (2010) Shifts in Organizational Form under a Dual Income Tax System. *FinanzArchiv/Public Finance Analysis*, 66, 384–418.
- [45] Van Kerm, P. (2004) What Lies Behind Income Mobility? Reranking and Distributional Change in Belgium, Western Germany and the USA. *Economica*, 71, 223–239.



## **Working Papers in Public Finance Series**

**WP01/2012** Debasis Bandyopadhyay, Robert Barro, Jeremy Couchman, Norman Gemmell, Gordon Liao and Fiona McAlister, "Average Marginal Income Tax Rates in New Zealand, 1907-2009"

**WP02/2012** Iris Claus, John Creedy and Josh Teng, "The Elasticity of Taxable Income in New Zealand"

**WP03/2012** Simon Carey, John Creedy, Norman Gemmell and Josh Teng "Regression Estimates of the Elasticity of Taxable Income and the Choice of Instrument"

**WP04/2012** John Creedy and Norman Gemmell, "Measuring Revenue Responses to Tax Rate Changes in Multi-Rate Income Tax Systems: Behavioural and Structural Factors"

**WP05/2012** John Creedy and Norman Gemmell, "Revenue-Maximising Elasticities of Taxable Income in Multi-Rates Income Tax Structures"

**WP06/2012** John Creedy and Nicolas Hérault, "Decomposing Inequality and Social Welfare Changes: The Use of Alternative Welfare Metrics"

**WP07/2012** John Creedy and Solmaz Moslehi, "The Composition of Government Expenditure with Alternative Choice Mechanisms"

**WP08/2012** John Creedy, Elin Halvorsen and Thor O. Thoresen, "Inequality Comparisons in a Multi-Period Framework: The Role of Alternative Welfare Metrics"

**WP09/2012** Norman Gemmell and John Hasseldine, "The Tax Gap: A Methodological Review"

## About the Authors

John Creedy is Visiting Professorial Fellow at Victoria Business School, Victoria University of Wellington, New Zealand, and a Principal Advisor at the New Zealand Treasury. He is on leave from the University of Melbourne where he is The Truby Williams Professor of Economics.

Email: [john.creedy@vuw.ac.nz](mailto:john.creedy@vuw.ac.nz)

Elin Halvorsen is a Research Economist at the Research Department, Statistics Norway.

Email: [e.halvorsen@ssb.no](mailto:e.halvorsen@ssb.no)

Thor O. Thoresen is a Senior Research Fellow at the Research Department, Statistics Norway.

Email: [thor.olav.thoresen@ssb.no](mailto:thor.olav.thoresen@ssb.no)

